



Not for marketing purposes INTERNAL USE ONLY

Farewell Lane
Burntwood



Property Description

WELCOME TO FAREWELL LANE. A LOVELY EXTENDED FAMILY HOME.

A beautifully presented five bedroom home in a lovely location on the edge of Burntwood offering a wealth of living space with an extended breakfast kitchen giving a fantastic family living area. The rear garden is perfect for entertaining and enjoying the summer months to come.

This large family home offers a wealth of living space featuring a log burner in the main lounge, an extended breakfast kitchen, utility and garage to the ground floor. Off the first floor landing you will find five bedrooms with master having an en suite shower room and a family bathroom. The rear garden offers a family plenty of room to entertain and enjoy privacy. To the fore of the property there is a large driveway for at least 3 cars and access to the double garage. The property benefits from fantastic transport links having direct links into Lichfield via the A5190 which has two train stations.

****DETACHED FAMILY HOME**

****FIVE BEDROOMS**

****MASTER WITH EN SUITE SHOWER ROOM**

****EXTENDED BREAKFAST KITCHEN**

****ENCLOSED REAR GARDEN**

****PARKING FOR SEVERAL CARS**

****GARAGE**

****GREAT LOCATION**

KITCHEN WITH WRAP AROUND DINING
AREA AND FAMILY SPACE

Utility Room

7' 2" x 5' 4" (2.18m x 1.63m)

First Floor Landing

Bedrooms One

14' 1" MAX x 12' 2" (4.29m MAX x 3.71m)

En Suite Shower Room

Bedroom Two

11' 1" MAX x 10' 6" (3.38m MAX x 3.20m)

Bedroom Three

9' 4" x 7' 5" (2.84m x 2.26m)

Bedroom Four

9' 9" x 8' 3" (2.97m x 2.51m)

Family Bathroom

Bedroom Five

11' 5" x 7' 3" (3.48m x 2.21m)

Front And Rear Garden

Garage And Parking

Entrance Hall

Guest W/C

Lounge

26' 7" x 13' 8" (8.10m x 4.17m)

WITH FEATURE LOG BURNER

Kitchen

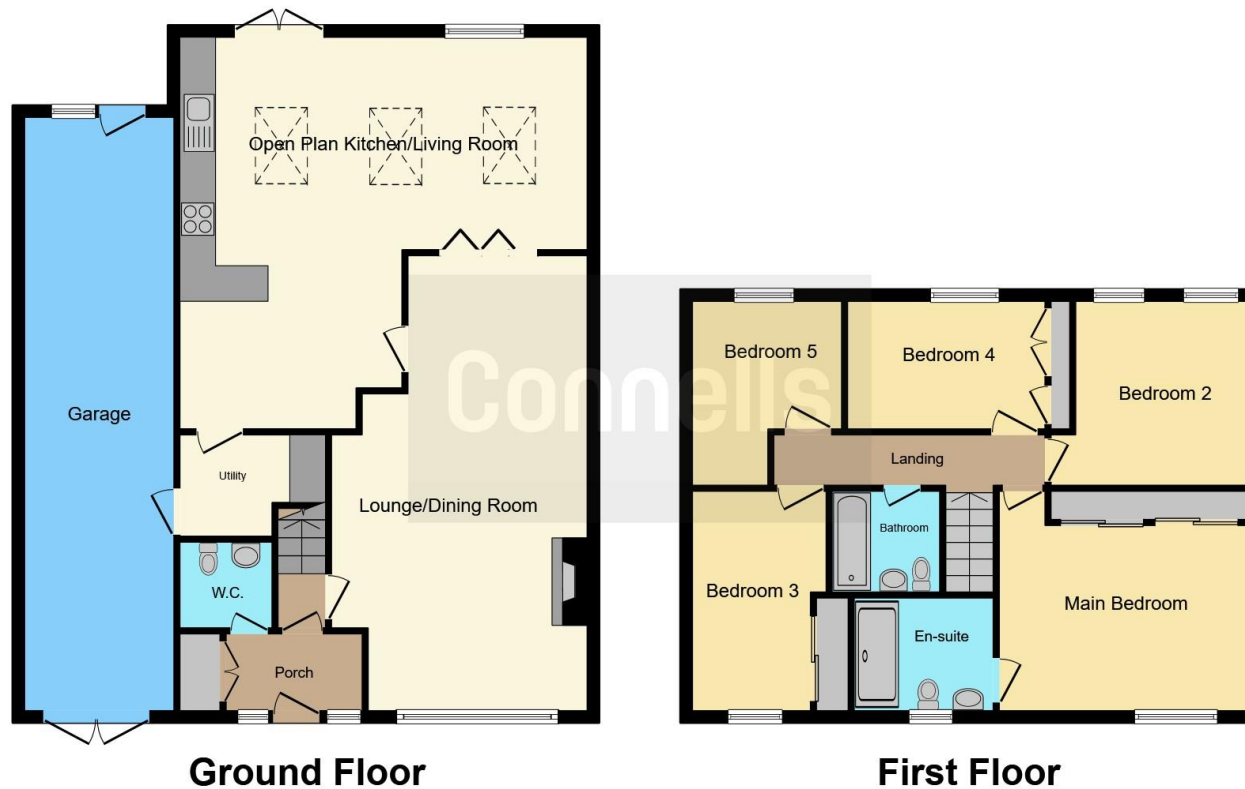
21' 7" MAX x 22' 4" (6.58m MAX x 6.81m)

BEAUTIFULLY EXTENDED BREAKFAST









This floor plan is for illustrative purposes only. It is not drawn to scale. Any measurements, floor areas (including any total floor area), openings and orientation are approximate. No details are guaranteed, they cannot be relied upon for any purpose and they do not form part of any agreement. No liability is taken for any error, omission or misstatement. A party must rely upon its own inspection(s). Powered by www.focalagent.com

To view this property please contact Connells on

T 01543 262 376
E lichfield@connells.co.uk

11 & 13 Bore Street
 LICHFIELD WS13 6LZ

EPC Rating: C

Tenure: Freehold

check out more properties at connells.co.uk



1. MONEY LAUNDERING REGULATIONS Intending purchasers will be asked to produce identification documentation at a later stage and we would ask for your co-operation in order that there will be no delay in agreeing the sale. 2. These particulars do not constitute part or all of an offer or contract. 3. The measurements indicated are supplied for guidance only and as such must be considered incorrect. Potential buyers are advised to recheck measurements before committing to any expense. 4. We have not tested any apparatus, equipment, fixtures, fittings or services and it is in the buyers interest to check the working condition of any appliances.

Connells Residential is registered in England and Wales under company number 1489613, Registered Office is Cumbria House, 16-20 Hockliffe Street, Leighton Buzzard, Bedfordshire, LU7 1GN. VAT Registration Number is 500 2481 05.

See all our properties at www.connells.co.uk | www.rightmove.co.uk | www.zoopla.co.uk

Property Ref: LFD311425 - 0004