



**Connells**

Rake End  
Hill Ridware Rugeley

# Rake End Hill Ridware Rugeley WS15 3RQ

for sale  
**£320,000**



## Property Description

**\*WOW\*** Connells Lichfield are delighted to offer for sale this wonderfully unique Hill Ridware Cottage that boasts a corner plot aspect with large driveway and a detached garage. **\*\*NO ONWARD CHAIN\*\***  
**\*\*FREEHOLD PROPERTY\*\***

If you are looking for a private countryside cottage boasting views over the Staffordshire countryside and having huge potential to put your own stamp on, then look no further. We can absolutely boast a corner aspect with a private gated driveway leading to a detached garage and a garden area.

Internally we have a lounge, kitchen diner, sun room, wc, two bedrooms and a bathroom.

Hill Ridware is ideally located in very close proximity to the Cathedral City of Lichfield, Rugeley Town and a host of similar countryside villages and hamlets all ready to be discovered and explored. The village itself has a fantastic primary school, a village hall and a superb public house restaurant in the Chadwick Arms.

**\*\*COUNTRYSIDE LIVING AT IT'S FINEST\*\***  
**\*\*AN ABSOLUTE MUST VISIT\*\***



## Lounge With Wood Burner

11' 2" x 16' ( 3.40m x 4.88m )

## Breakfast Kitchen

8' 11" x 16' 1" ( 2.72m x 4.90m )

## Sun Room

5' 11" x 10' 2" ( 1.80m x 3.10m )

## Guest Wc

## First Floor Landing

## Bedroom One

11' 2" x 16' ( 3.40m x 4.88m )

## Bedroom Two

10' 3" x 6' 4" ( 3.12m x 1.93m )

## Bathroom

## Private Gated Long Driveway

## Detached Garage

## Brick Built Outbuilding

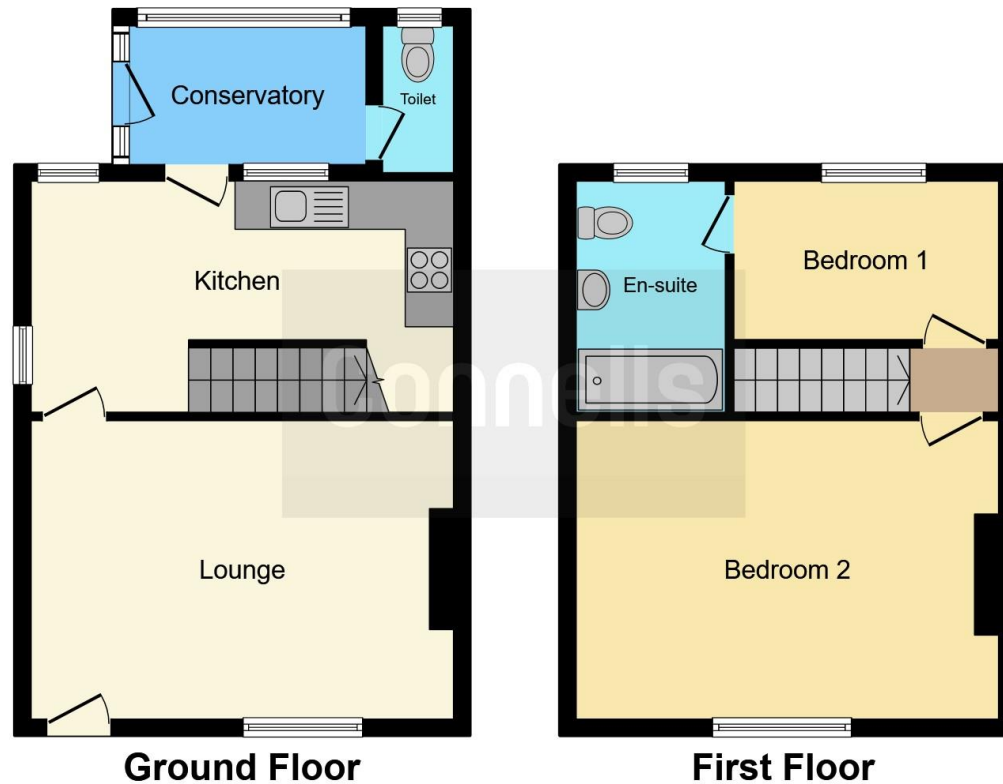
## Private Rear Garden

## Wonderfully Unique Cottage









This floor plan is for illustrative purposes only. It is not drawn to scale. Any measurements, floor areas (including any total floor area), openings and orientation are approximate. No details are guaranteed, they cannot be relied upon for any purpose and they do not form part of any agreement. No liability is taken for any error, omission or misstatement. A party must rely upon its own inspection(s). Powered by [www.focalagent.com](http://www.focalagent.com)

To view this property please contact Connells on

**T 01543 262 376**  
**E [lichfield@connells.co.uk](mailto:lichfield@connells.co.uk)**

11 & 13 Bore Street  
 LICHFIELD WS13 6LZ

**EPC Rating: Exempt**

Tenure: Freehold

**view this property online [connells.co.uk/Property/LFD310957](http://connells.co.uk/Property/LFD310957)**



1. MONEY LAUNDERING REGULATIONS Intending purchasers will be asked to produce identification documentation at a later stage and we would ask for your co-operation in order that there will be no delay in agreeing the sale. 2. These particulars do not constitute part or all of an offer or contract. 3. The measurements indicated are supplied for guidance only and as such must be considered incorrect. Potential buyers are advised to recheck measurements before committing to any expense. 4. We have not tested any apparatus, equipment, fixtures, fittings or services and it is in the buyers interest to check the working condition of any appliances.

Connells Residential is registered in England and Wales under company number 1489613, Registered Office is Cumbria House, 16-20 Hockliffe Street, Leighton Buzzard, Bedfordshire, LU7 1GN. VAT Registration Number is 500 2481 05.

**See all our properties at [www.connells.co.uk](http://www.connells.co.uk) | [www.rightmove.co.uk](http://www.rightmove.co.uk) | [www.zoopla.co.uk](http://www.zoopla.co.uk)**

Property Ref: LFD310957 - 0005