



Connells

Martin Drive
Lichfield



Property Description

A beautifully finished family home which is set over three separate floors. Located on the ever popular Hallam Park Estate in Lichfield, being a short walk away from the City Centre and plenty of local amenities.

Built by David Wilson in 2019 this home boasts an ample amount of living accommodation throughout. The Greenwood is a one of only two built on the estate. The Greenwood briefly comprises of an entrance hallway, guest cloakroom, study and a stunning open plan kitchen / diner to the rear. To the first floor the property then offers a spacious lounge and the master bedroom, which is accompanied by an en suite. To the top floor there are another two double sized bedrooms and a modern family bathroom.

Externally, this home boasts a great sized rear garden with driveway space available for four cars with access to the garage via up and over doors.

Being just a short walk away from the city centre, there are a range of local amenities within close distance to Martin Drive including, Waitrose, Inkwell Pub, Three Tuns restaurant and many more. Lichfield's two main train stations also have direct links into Birmingham New Street and London Euston.



Entrance Hall

Guest W/C

Study

7' 9" x 6' 4" (2.36m x 1.93m)

Kitchen/Diner/Family Room

13' 7" max x 22' 6" (4.14m max x 6.86m)

Lounge To 1st Floor

10' 11" x 13' 7" (3.33m x 4.14m)

Bedroom One

13' 7" x 10' 5" (4.14m x 3.17m)

En-Suite

Bedroom Two

13' 6" x 12' 2" (4.11m x 3.71m)

Bedroom Three

10' 11" x 13' 10" (3.33m x 4.22m)

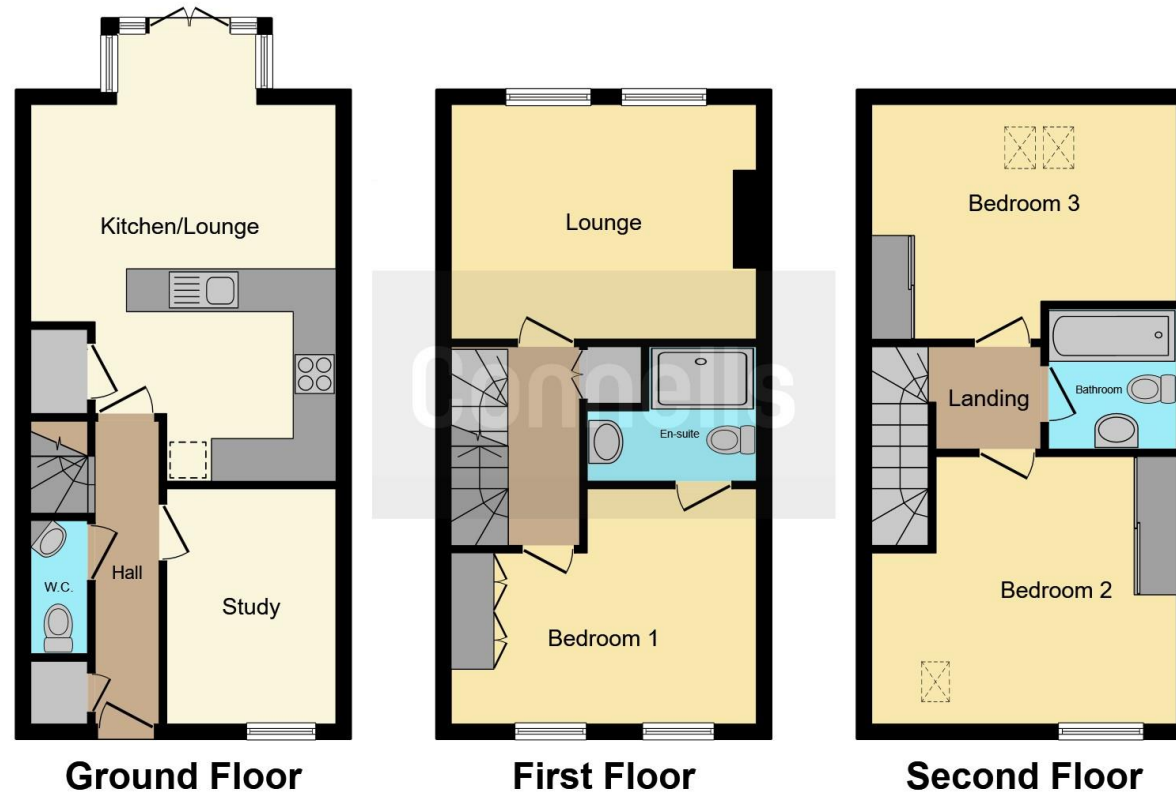
Family Bathroom

Detached Single Garage









This floor plan is for illustrative purposes only. It is not drawn to scale. Any measurements, floor areas (including any total floor area), openings and orientation are approximate. No details are guaranteed, they cannot be relied upon for any purpose and they do not form part of any agreement. No liability is taken for any error, omission or misstatement. A party must rely upon its own inspection(s). Powered by www.focalagent.com

To view this property please contact Connells on

T 01543 262 376
E lichfield@connells.co.uk

11 & 13 Bore Street
 LICHFIELD WS13 6LZ

EPC Rating: B

Tenure: Freehold

view this property online connells.co.uk/Property/LFD310858



1. MONEY LAUNDERING REGULATIONS Intending purchasers will be asked to produce identification documentation at a later stage and we would ask for your co-operation in order that there will be no delay in agreeing the sale. 2. These particulars do not constitute part or all of an offer or contract. 3. The measurements indicated are supplied for guidance only and as such must be considered incorrect. Potential buyers are advised to recheck measurements before committing to any expense. 4. We have not tested any apparatus, equipment, fixtures, fittings or services and it is in the buyers interest to check the working condition of any appliances.

Connells Residential is registered in England and Wales under company number 1489613, Registered Office is Cumbria House, 16-20 Hockliffe Street, Leighton Buzzard, Bedfordshire, LU7 1GN. VAT Registration Number is 500 2481 05.

See all our properties at www.connells.co.uk | www.rightmove.co.uk | www.zoopla.co.uk

Property Ref: LFD310858 - 0008