



Connells

Stowe Place Rotten Row
Lichfield



Property Description

*** 80% SHARE***

This attractive Retirement Living PLUS development in lovely Lichfield includes 28 one bedroom and 37 two bedroom retirement apartments for sale exclusive to the over 70s, many with private balconies and all sharing beautiful communal facilities.

These retirement properties in Lichfield are located in the heart of this historic city, so you're close to a number of facilities and amenities, including pubs, restaurants, supermarkets, a pharmacy, an optician, a medical practice and a dentist. Central Lichfield is a great place for a spot of retail therapy too, as the quaint streets are lined with high street chains and independent boutiques.

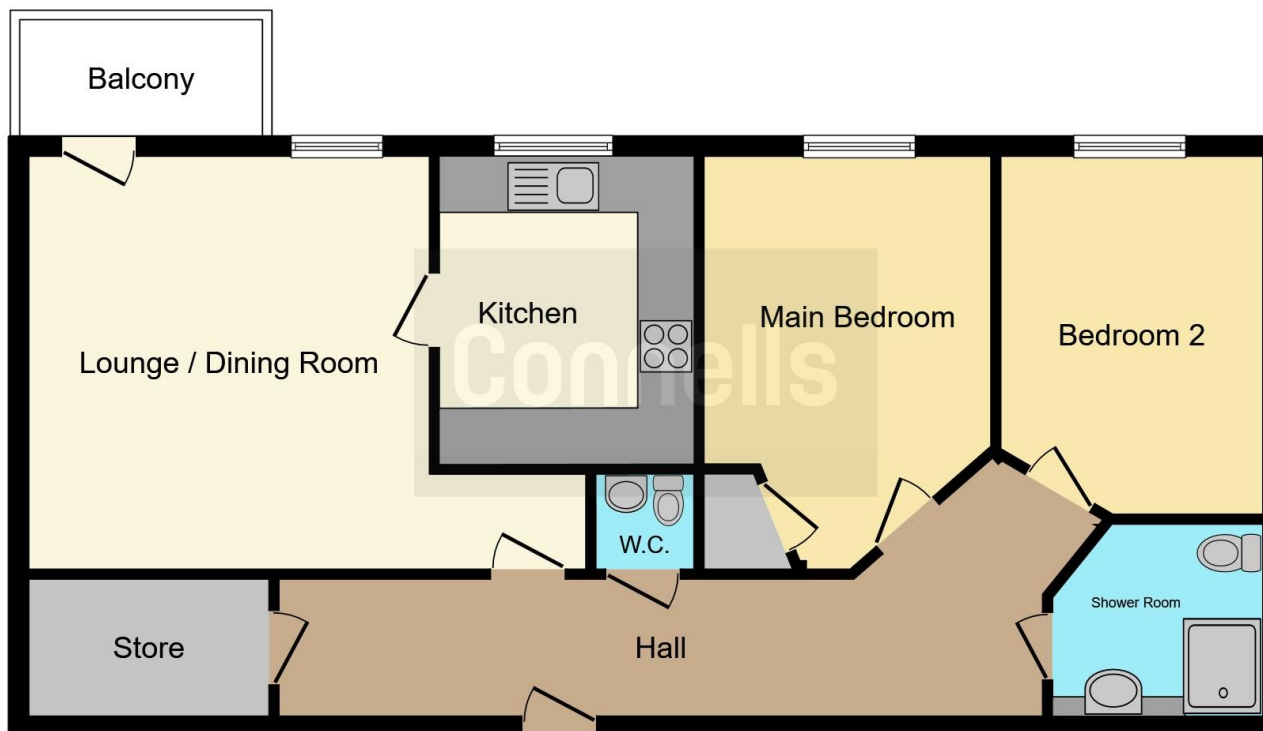
Lovely landscaped gardens for evening cocktails and lazy afternoons with friends. On-site chef-run bistro with ever changing seasonal menus plus barista coffee and cake. Communal lounge and function room for parties, anniversaries, events and socialising. Manager onsite 24/7, plus tailored domestic support and personal care on tap should you need it

Community feeling with a calendar of events, clubs and activities to suit all interests. A hotel-style guest suite makes having friends and family to stay a breeze. ****AVAILABLE FOR VIEWINGS NOW****









This floor plan is for illustrative purposes only. It is not drawn to scale. Any measurements, floor areas (including any total floor area), openings and orientation are approximate. No details are guaranteed, they cannot be relied upon for any purpose and they do not form part of any agreement. No liability is taken for any error, omission or misstatement. A party must rely upon its own inspection(s). Powered by www.focalagent.com

To view this property please contact Connells on

T 01543 262 376
E lichfield@connells.co.uk

11 & 13 Bore Street
LICHFIELD WS13 6LZ

EPC Rating: C

Tenure: Leasehold

view this property online connells.co.uk/Property/LFD310723

This is a Leasehold property. We are awaiting further details about the Term of the lease. For further information please contact the branch. Please note additional fees could be incurred for items such as Leasehold packs.



1. MONEY LAUNDERING REGULATIONS Intending purchasers will be asked to produce identification documentation at a later stage and we would ask for your co-operation in order that there will be no delay in agreeing the sale. 2. These particulars do not constitute part or all of an offer or contract. 3. The measurements indicated are supplied for guidance only and as such must be considered incorrect. Potential buyers are advised to recheck measurements before committing to any expense. 4. We have not tested any apparatus, equipment, fixtures, fittings or services and it is in the buyers interest to check the working condition of any appliances.

Connells Residential is registered in England and Wales under company number 1489613, Registered Office is Cumbria House, 16-20 Hockliffe Street, Leighton Buzzard, Bedfordshire, LU7 1GN. VAT Registration Number is 500 2481 05.

See all our properties at www.connells.co.uk | www.rightmove.co.uk | www.zoopla.co.uk

Property Ref: LFD310723 - 0004