

for sale

£240,000



## Sherril Close Plymouth PL9 9DB

Offered with no onward chain is this three bedroom, end terraced house located in the popular area of Staddiscombe. Briefly comprising; Entrance porch, lounge, dining room, kitchen, bathroom, separate WC, three bedrooms and front and rear gardens.

# Sherril Close Plymouth PL9 9DB

## Entrance

Enter the property through a double glazed door into the entrance porch, a further internal door leads to the hallway.

## Lounge

13' x 10' 10" ( 3.96m x 3.30m )

Double glazed window to the front aspect, radiator and door leading to the dining room.

## Dining Room

10' 2" x 9' 3" ( 3.10m x 2.82m )

Radiator and double glazed sliding doors leading to the rear garden.

## Kitchen

10' 1" x 10' 2" ( 3.07m x 3.10m )

Comprising: Shaker style kitchen with matching wall and base units and complimentary work surface over, double eye level oven, gas hob with extractor fan, stainless steel sink with drainer, space and plumbing for undercounter washing machine and double glazed window to the rear aspect.

## First Floor

Loft hatch and two storage cupboards.

## Bedroom One

11' 4" x 10' 8" ( 3.45m x 3.25m )

Double glazed window to the rear aspect and radiator.

## Bedroom Two

10' 9" x 10' 1" ( 3.28m x 3.07m )

Double glazed window to the front aspect and a radiator.

## Bedroom Three

9' 1" x 7' 2" ( 2.77m x 2.18m )

Double glazed window to the front aspect and build in storage cupboard.

## Bathroom

Comprising; Bath with shower head, wash hand basin with vanity, heated towel rail and obscured double glazed window to the rear aspect.

## Wc

Separate WC with double glazed obscured window to the rear

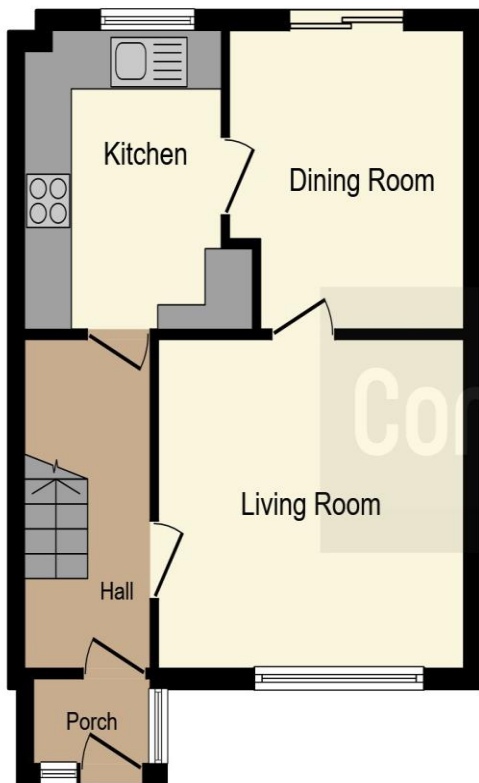


aspect.

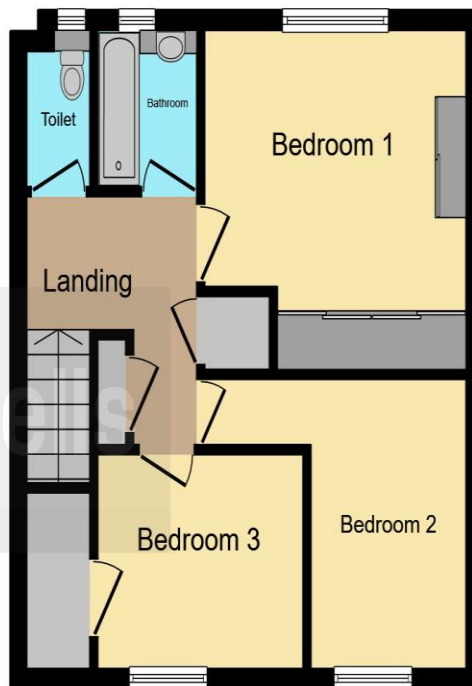
## Outside

To the rear of the property there is a good sized garden. To the front of the property there is an area laid to patio.





**Ground Floor**



**First Floor**

This floor plan is for illustrative purposes only. It is not drawn to scale. Any measurements, floor areas (including any total floor area), openings and orientation are approximate. No details are guaranteed, they cannot be relied upon for any purpose and they do not form part of any agreement. No liability is taken for any error, omission or misstatement. A party must rely upon its own inspection(s). Powered by [www.focalagent.com](http://www.focalagent.com)

To view this property please contact Connells on

**T 01752 481 577**  
**E [plymstock@connells.co.uk](mailto:plymstock@connells.co.uk)**

2A The Broadway Plymstock  
 PLYMOUTH PL9 7AW

Property Ref: PLK306936 - 0004

**Tenure:** Freehold

**EPC Rating:** C

**view this property online [connells.co.uk/Property/PLK306936](http://connells.co.uk/Property/PLK306936)**



1. MONEY LAUNDERING REGULATIONS Intending purchasers will be asked to produce identification documentation at a later stage and we would ask for your co-operation in order that there will be no delay in agreeing the sale. 2. These particulars do not constitute part or all of an offer or contract. 3. The measurements indicated are supplied for guidance only and as such must be considered incorrect. Potential buyers are advised to recheck measurements before committing to any expense. 4. We have not tested any apparatus, equipment, fixtures, fittings or services and it is in the buyers interest to check the working condition of any appliances.

Connells Residential is registered in England and Wales under company number 1489613, Registered Office is Cumbria House, 16-20 Hockliffe Street, Leighton Buzzard, Bedfordshire, LU7 1GN. VAT Registration Number is 500 2481 05.

see all our properties at [www.connells.co.uk](http://www.connells.co.uk) | [www.rightmove.co.uk](http://www.rightmove.co.uk) | [www.zoopla.co.uk](http://www.zoopla.co.uk)