



Connells

Shortwood Crescent
Plymouth



Property Description

Nestled in the heart of Plymstock, this charming three-bedroom semi-detached property offers the perfect blend of comfort and convenience. As you approach, you'll be greeted by a driveway, along with a garage for additional storage or parking.

Step inside to discover generously sized rooms throughout. Starting with a spacious lounge that features dual entrances to both hallway and dining room - ideal for modern living and entertaining. The recently renovated kitchen is a highlight, boasting contemporary fittings and ample space for culinary endeavours, while the boiler, just a year old, ensures energy-efficient heating.

Upstairs, the property continues to impress with three well-proportioned bedrooms, making it an excellent choice for families. The master bedroom benefits from a built-in wardrobe, providing convenient storage solutions.

Outside, enjoy a well-maintained front garden and a large, flat rear garden complete with a patio area, perfect for outdoor dining and relaxation. The garden backs onto a peaceful greenery, offering a quiet and private setting.

This delightful home combines spacious living with a prime location, making it an excellent opportunity for families looking to settle in Plymstock.

Living Room

13' 1" max x 13' 1" max narrowing to (3.99m max x 3.99m max narrowing to)

The airy and modern living room is a perfect hub for this family home.

Dining

9' 3" x 9' 5" narrowing to (2.82m x 2.87m narrowing to)

The dining room with its sliding patio doors gives you a feeling of outside living, this space with its natural light is a delight to spend formal or family gatherings in.

Kitchen

9' 3" x 9' 4" narrowing to (2.82m x 2.84m narrowing to)

The kitchen has a modern feel, the elegant cabinets set the stage for this kitchen's beauty.

Bedroom 1

14' max x 10' 10" max narrowing to (4.27m max x 3.30m max narrowing to)

The master bedroom is a tranquil space, perfect for coming home and relaxing after those long, busy days.

Bedroom 2

8' 7" max x 11' 5" max narrowing to (2.62m max x 3.48m max narrowing to)

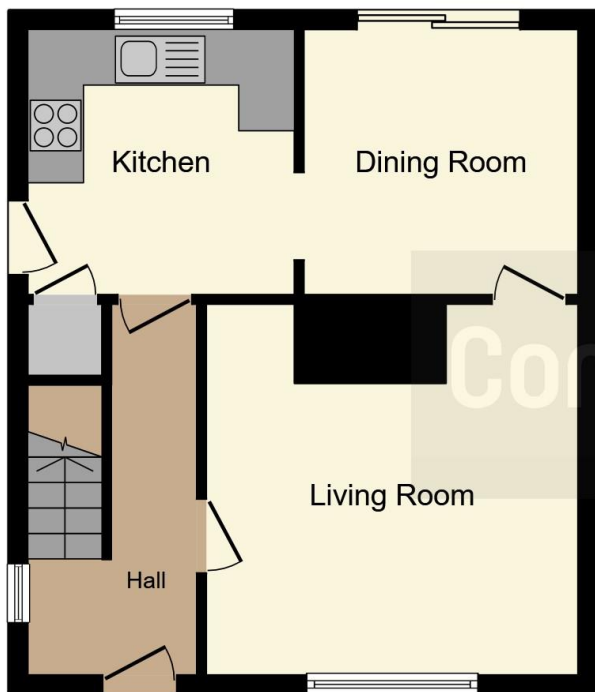
This second room is spacious with casting views over the garden.

Bedroom 3

7' 8" x 9' 1" narrowing to (2.34m x 2.77m narrowing to)

The third bedroom is a perfect room for kids or a nursery.





Ground Floor



First Floor

This floor plan is for illustrative purposes only. It is not drawn to scale. Any measurements, floor areas (including any total floor area), openings and orientation are approximate. No details are guaranteed, they cannot be relied upon for any purpose and they do not form part of any agreement. No liability is taken for any error, omission or misstatement. A party must rely upon its own inspection(s). Powered by www.focalagent.com

To view this property please contact Connells on

T 01752 481 577
E plymstock@connells.co.uk

2A The Broadway Plymstock
 PLYMOUTH PL9 7AW

EPC Rating: C

view this property online connells.co.uk/Property/PLK306862

Tenure: Freehold



1. MONEY LAUNDERING REGULATIONS Intending purchasers will be asked to produce identification documentation at a later stage and we would ask for your co-operation in order that there will be no delay in agreeing the sale. 2. These particulars do not constitute part or all of an offer or contract. 3. The measurements indicated are supplied for guidance only and as such must be considered incorrect. Potential buyers are advised to recheck measurements before committing to any expense. 4. We have not tested any apparatus, equipment, fixtures, fittings or services and it is in the buyers interest to check the working condition of any appliances.

Connells Residential is registered in England and Wales under company number 1489613, Registered Office is Cumbria House, 16-20 Hockliffe Street, Leighton Buzzard, Bedfordshire, LU7 1GN. VAT Registration Number is 500 2481 05.

See all our properties at www.connells.co.uk | www.rightmove.co.uk | www.zoopla.co.uk

Property Ref: PLK306862 - 0009