



**Connells**

Wotter Bungalows  
Wotter Plymouth



# Wotter Bungalows

## Wotter Plymouth PL7 5HW

for sale  
**£425,000**



### Property Description

Welcome to this spacious and well-proportioned three double bedroom detached bungalow, perfectly positioned in the peaceful and picturesque village of Wotter (PL7). Enjoying panoramic countryside views, this charming home offers an idyllic blend of comfort, privacy, and rural tranquillity.

Inside, the property features a light and airy living room, flooded with natural light and offering direct access to the conservatory and rear garden—perfect for relaxing or entertaining while soaking in the beautiful scenery. The good-sized fitted kitchen provides ample storage and worktop space, complemented by exceptional views across the surrounding landscape.

All three bedrooms are generous double rooms, offering versatility for family living, guests, or home office use. A well-appointed family bathroom, useful utility room, and spacious front porch—ideal for coats, shoes, and everyday essentials—enhance the practicality of the layout.

Set on a good-sized plot, the property boasts both front and rear enclosed gardens, offering a safe and private outdoor environment. A private driveway provides ample parking, leading to a double garage, ensuring excellent storage or workshop potential. This is a fantastic opportunity to create your dream home in a tranquil, idyllic setting.

### Porch

Double glazed sliding doors to the side aspect, good sized area for coats and shoes, access to the utility room and hallway

### Utility Room

8' max x 7' 7" max ( 2.44m max x 2.31m max )

Double glazed window to the rear aspect

### Hallway

Door access to bedrooms, bathroom and kitchen, loft access, radiator

### Living Room

16' max x 11' 7" max ( 4.88m max x 3.53m max )

Double glazed sliding doors and window to the conservatory, Wood burner, two radiators

### Conservatory

Double glazed sliding doors to the rear aspect



## Kitchen

18' max x 11' 3" max ( 5.49m max x 3.43m max )

Double glazed windows to the rear and sides aspect, fitted kitchen with wall and base units, one and half bowl sink and draining board with mixer tap, built in oven, induction hob, extractor hood, two radiators

## Bedroom One

13' 5" max x 11' 1" max ( 4.09m max x 3.38m max )

Double glazed window to the rear elevation, fitted wardrobe, radiator

## Bedroom Two

11' 1" max x 10' 1" max ( 3.38m max x 3.07m max )

Double glazed window to the side elevation, fitted wardrobes, radiator

## Bedroom Three

11' 8" max x 7' 10" max ( 3.56m max x 2.39m max )

Double glazed window to the side elevation, radiator

## Bathroom

7' 5" max x 5' 11" max ( 2.26m max x 1.80m max )

Double glazed window to the side elevation, wash hand basin and vanity unit, bath with electric shower over, part tiled, radiator

## Toilet

Double glazed window to the side elevation, low level WC

## Rear Garden

Fully enclosed, good sized patio area and laid to lawn area with fantastic far reaching views

## Driveway

Parking for four vehicles

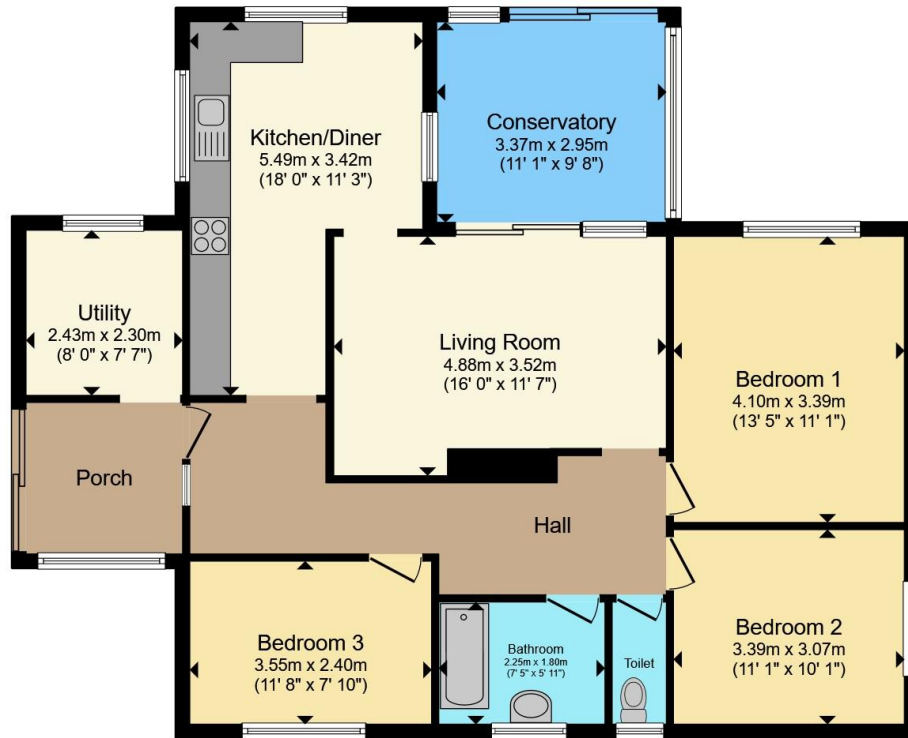
## Double Garage

18' 2" max x 17' 6" max ( 5.54m max x 5.33m max )

Electric roller door, power supply







Total floor area 108.6 m<sup>2</sup> (1,169 sq.ft.) approx

This floor plan is for illustrative purposes only. It is not drawn to scale. Any measurements, floor areas (including any total floor area), openings and orientation are approximate. No details are guaranteed, they cannot be relied upon for any purpose and they do not form part of any agreement. No liability is taken for any error, omission or misstatement. A party must rely upon its own inspection(s). Powered by [www.propertybox.io](http://www.propertybox.io)

**Connells**



To view this property please contact Connells on

**T 01752 345 135**  
**E [plympton@connells.co.uk](mailto:plympton@connells.co.uk)**

110 Ridgeway Plympton  
 PLYMOUTH PL7 2HN

EPC Rating: D Council Tax  
 Band: C

**view this property online [connells.co.uk/Property/PLN307486](http://connells.co.uk/Property/PLN307486)**

Tenure: Freehold



1. MONEY LAUNDERING REGULATIONS Intending purchasers will be asked to produce identification documentation at a later stage and we would ask for your co-operation in order that there will be no delay in agreeing the sale. 2. These particulars do not constitute part or all of an offer or contract. 3. The measurements indicated are supplied for guidance only and as such must be considered incorrect. Potential buyers are advised to recheck measurements before committing to any expense. 4. We have not tested any apparatus, equipment, fixtures, fittings or services and it is in the buyers interest to check the working condition of any appliances.

Connells Residential is registered in England and Wales under company number 1489613, Registered Office is Cumbria House, 16-20 Hockliffe Street, Leighton Buzzard, Bedfordshire, LU7 1GN. VAT Registration Number is 500 2481 05.

**See all our properties at [www.connells.co.uk](http://www.connells.co.uk) | [www.rightmove.co.uk](http://www.rightmove.co.uk) | [www.zoopla.co.uk](http://www.zoopla.co.uk)**

Property Ref: PLN307486 - 0003