



Connells

Moorland Gardens
Plymouth



Property Description

This well-presented two bedroom terraced property is tucked away discreetly in a quiet and tranquil corner in Moorland Gardens within walking distance to Colebrook and the Ridgeway.

The ground floor consists of a cosy living room with space for a dining table and a spacious kitchen with wall and base mounted units. Upstairs, the home boasts two double bedrooms and a family bathroom complete with shower.

Externally, there is a good sized garden, allocated parking space and on street parking.

Whether you are purchasing your first home or alternatively looking for a popular buy-to-let investment, this delightful family home has everything to offer.

Entrance Hall

Double glazed door to the front elevation, two storage cupboards space for coats and shoes

Lounge

15' 6" Max x 15' 11" Max (4.72m Max x 4.85m Max)

Double glazed bay window to the side elevation, wall mounted gas fire, stairs ascending to first floor, two radiators

Kitchen

7' 7" Max x 8' 4" Max (2.31m Max x 2.54m Max)

Double glazed window to the side elevation, fitted kitchen with wall and base units, integrated oven and grill, electric hob, cooker hood, plumbing for washing machine, space for fridge freezer, one and half bowl stainless steel sink and drainer with mixer tap, part tiled, radiator

Bedroom One

8' Max x 12' Max (2.44m Max x 3.66m Max)

Double glazed window to the side elevation, fitted wardrobes, radiator, loft access

Bedroom Two

8' 8" Max x 6' Max (2.64m Max x 1.83m Max)

Double glazed window to the side elevation, radiator

Bathroom

Double glazed obscured glass window to the front elevation, bath with electric shower over, wash hand basin, low level WC, fully tiled, radiator

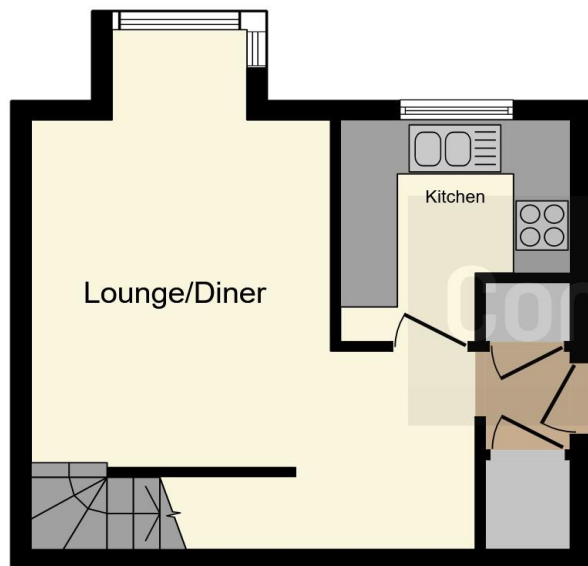
Garden

Sunny outside space, lawn area that wraps round to the side

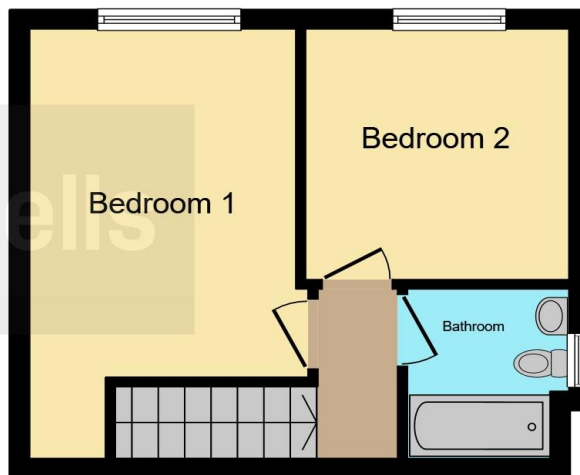
Parking

Allocated parking space directly outside front door





Ground Floor



First Floor

This floor plan is for illustrative purposes only. It is not drawn to scale. Any measurements, floor areas (including any total floor area), openings and orientation are approximate. No details are guaranteed, they cannot be relied upon for any purpose and they do not form part of any agreement. No liability is taken for any error, omission or misstatement. A party must rely upon its own inspection(s). Powered by www.focalagent.com



To view this property please contact Connells on

T 01752 345 135
E plympton@connells.co.uk

110 Ridgeway Plympton
 PLYMOUTH PL7 2HN

EPC Rating: C

view this property online connells.co.uk/Property/PLN306890

Tenure: Freehold



1. MONEY LAUNDERING REGULATIONS Intending purchasers will be asked to produce identification documentation at a later stage and we would ask for your co-operation in order that there will be no delay in agreeing the sale. 2. These particulars do not constitute part or all of an offer or contract. 3. The measurements indicated are supplied for guidance only and as such must be considered incorrect. Potential buyers are advised to recheck measurements before committing to any expense. 4. We have not tested any apparatus, equipment, fixtures, fittings or services and it is in the buyers interest to check the working condition of any appliances.

Connells Residential is registered in England and Wales under company number 1489613, Registered Office is Cumbria House, 16-20 Hockliffe Street, Leighton Buzzard, Bedfordshire, LU7 1GN. VAT Registration Number is 500 2481 05.

See all our properties at www.connells.co.uk | www.rightmove.co.uk | www.zoopla.co.uk

Property Ref: PLN306890 - 0003