



Connells

Mount Gould Road
Plymouth

Mount Gould Road
Plymouth PL4 7PZ

for sale guide price
£190,000



Property Description

Welcoming to the market is the exciting opportunity to acquire this two bedroom end of terrace property, situated in a popular residential location. Benefiting from two double bedrooms, two reception rooms, kitchen, downstairs W.C., bathroom, rear garden and driveway.

Located centrally in the Mount Gould area of Plymouth, close to a host of local amenities, local parks and a stone's throw away from the city centre and major transport links.

As you enter this property through the side aspect, you will find a downstairs W.C. a spacious lounge which flows effortlessly into the a separate dining area, a kitchen with matching wall and base units with direct access to a large rear garden.

On the first floor, you have two good-sized double bedrooms with built-in storage space benefiting the primary bedroom and a family bathroom comprising walk-in shower, bath, hand basin and W.C. completing this home.

Externally, this property offers a large rear garden, perfect for enjoying in the summer months, and a two car driveway to the front.

BOOK YOUR VIEWINGS NOW!

As you enter this property through the side aspect, you will find a downstairs W.C. a spacious lounge which flows effortlessly into the a separate dining area, a kitchen with matching wall and base units with direct

access to a large rear garden.

On the first floor, you have two good-sized double bedrooms with built-in storage space benefiting the primary bedroom and a family bathroom comprising walk-in shower, bath, hand basin and W.C. completing this home.

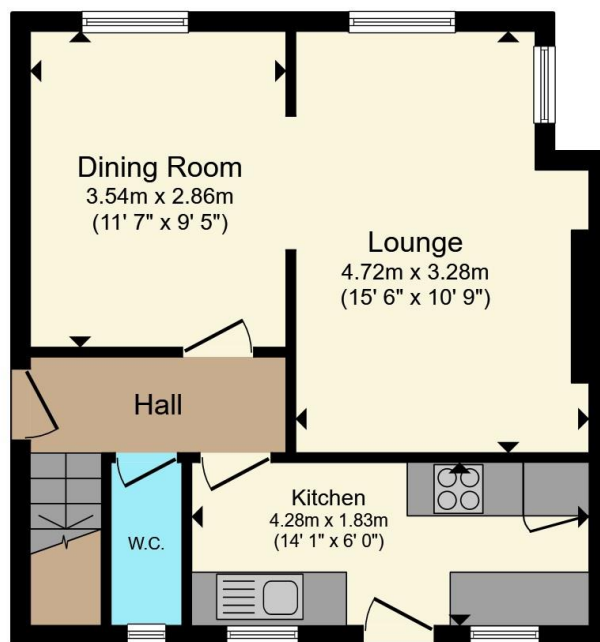
Externally, this property offers a large rear garden, perfect for enjoying in the summer months, and a two car driveway to the front.

BOOK YOUR VIEWINGS NOW!

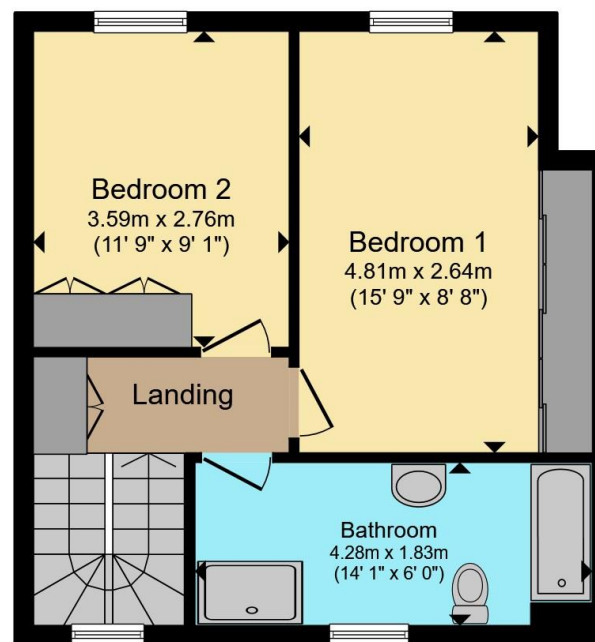








Ground Floor



First Floor

Total floor area 81.2 m² (874 sq.ft.) approx

This floor plan is for illustrative purposes only. It is not drawn to scale. Any measurements, floor areas (including any total floor area), openings and orientation are approximate. No details are guaranteed, they cannot be relied upon for any purpose and they do not form part of any agreement. No liability is taken for any error, omission or misstatement. A party must rely upon its own inspection(s). Powered by www.propertybox.io

Connells

To view this property please contact Connells on

T 01752 674 467
E plymouth@connells.co.uk

32 Mannamead Road
PLYMOUTH PL4 7AA

EPC Rating: Council Tax
Awaited Band: A

Tenure: Freehold

view this property online connells.co.uk/Property/PLH312976



1. MONEY LAUNDERING REGULATIONS Intending purchasers will be asked to produce identification documentation at a later stage and we would ask for your co-operation in order that there will be no delay in agreeing the sale. 2. These particulars do not constitute part or all of an offer or contract. 3. The measurements indicated are supplied for guidance only and as such must be considered incorrect. Potential buyers are advised to recheck measurements before committing to any expense. 4. We have not tested any apparatus, equipment, fixtures, fittings or services and it is in the buyers interest to check the working condition of any appliances.

Connells Residential is registered in England and Wales under company number 1489613, Registered Office is Cumbria House, 16-20 Hockliffe Street, Leighton Buzzard, Bedfordshire, LU7 1GN. VAT Registration Number is 500 2481 05.

See all our properties at www.connells.co.uk | www.rightmove.co.uk | www.zoopla.co.uk

Property Ref: PLH312976 - 0002