



Connells

Bearsdown Close
Plymouth



Property Description

Situated in the sought after location of Eggbuckland, is this stunning three bedroom detached bungalow with multi car driveway and integral garage. This residence also offers three good sized double bedrooms with modern fitted bathroom and substantial lounge, making the perfect family home!

Upon entry you will find a light and airy entrance hall, with access to kitchen diner comprising of modern fitted appliances and views over the valley. An adjacent lounge with large window to the front providing the perfect entertaining space. bathroom with walk in shower, WC , basin and convenient shower space.

Lounge

12' 1" max x 15' 1" max (3.68m max x 4.60m max)

Window to front aspect.

Kitchen

10' 2" x 20' (3.10m x 6.10m)

Comprising; Matching wall and base units with work surface over, sink with drainer, range style cooker, gas hob, extractor fan, door leading to the garden and windows to the front and rear aspects.

Bedroom One

13' 5" max x 9' max (4.09m max x 2.74m

max)

Door to the rear aspect, fitted wardrobes.

Bedroom Two

10' 1" max x 11' 9" max (3.07m max x 3.58m max)

Windows to rear and side aspect.

Bedroom Three

12' 3" max x 8' 10" max (3.73m max x 2.69m max)

Window to side aspect

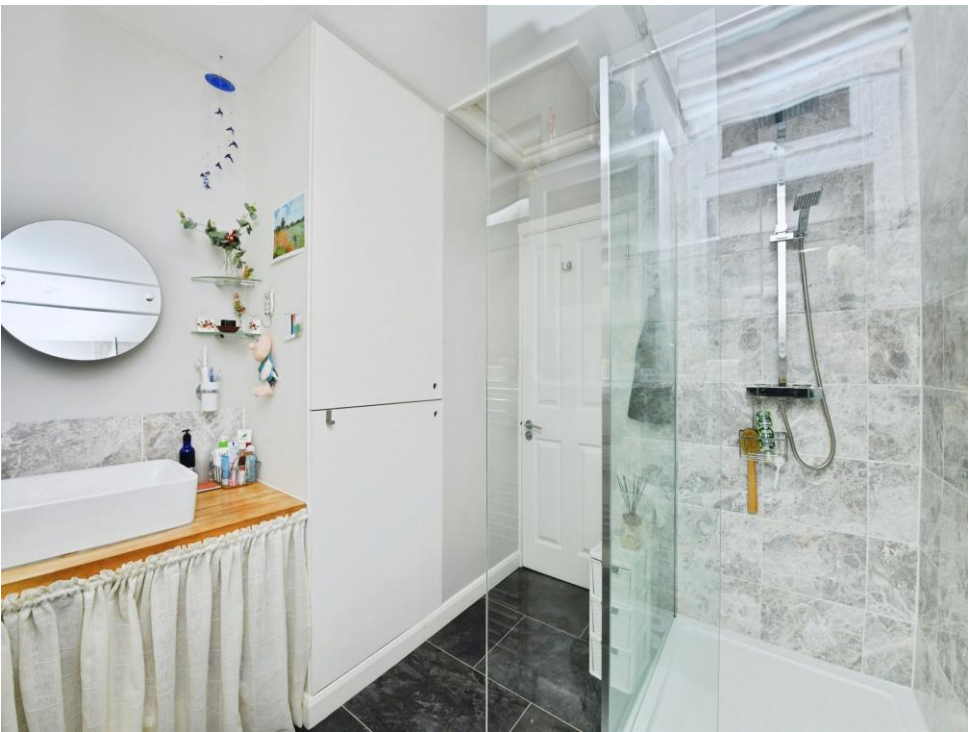
Shower Room

Comprising; WC, wash hand basin, shower cubicle and storage cupboard.

Garage

11' 9" x 15' 10" (3.58m x 4.83m)









Floor Plan

Garage

This floor plan is for illustrative purposes only. It is not drawn to scale. Any measurements, floor areas (including any total floor area), openings and orientation are approximate. No details are guaranteed, they cannot be relied upon for any purpose and they do not form part of any agreement. No liability is taken for any error, omission or misstatement. A party must rely upon its own inspection(s). Powered by www.focalagent.com

To view this property please contact Connells on

T 01752 674 467
E plymouth@connells.co.uk

32 Mannamead Road
 PLYMOUTH PL4 7AA

EPC Rating: D

Tenure: Freehold

view this property online connells.co.uk/Property/PLH312070



1. MONEY LAUNDERING REGULATIONS Intending purchasers will be asked to produce identification documentation at a later stage and we would ask for your co-operation in order that there will be no delay in agreeing the sale. 2. These particulars do not constitute part or all of an offer or contract. 3. The measurements indicated are supplied for guidance only and as such must be considered incorrect. Potential buyers are advised to recheck measurements before committing to any expense. 4. We have not tested any apparatus, equipment, fixtures, fittings or services and it is in the buyers interest to check the working condition of any appliances.

Connells Residential is registered in England and Wales under company number 1489613, Registered Office is Cumbria House, 16-20 Hockliffe Street, Leighton Buzzard, Bedfordshire, LU7 1GN. VAT Registration Number is 500 2481 05.

See all our properties at www.connells.co.uk | www.rightmove.co.uk | www.zoopla.co.uk

Property Ref: PLH312070 - 0002