



Connells

Bedford Park
Bere Alston Yelverton

Bedford Park Bere Alston Yelverton PL20 7DQ

for sale offers in excess of
£310,000



Property Description

Situated in the charming west Devon village of Bere Alston, is this beautiful three storey, four bedroom semi-detached property. This beautiful four bedroom home, benefits from two reception rooms, two bathrooms, modern kitchen, a large rear garden and a garage.

On the ground floor you enter a porch area with a hallway leading to a spacious lounge with a bay window and fireplace. A second reception room can be found creating additional space for social events with an opening to the dining room which has double doors leading to a substantial rear garden. As you make your way through the property there is a modern kitchen with matching wall and base units. The ground floor also benefits from a downstairs shower room with a walk-in shower, hand basin and W.C.

On the first floor, you will find two double bedroom and one good-sized single bedroom. To the front of the property is the first of the double bedrooms with a bay window, with the second double bedroom with built-in storage. The single bedroom can be found to the rear of the property which can be used as an office/study area. The second bathroom can also be found on this floor benefiting from a bath, hand basin and W.C.

On the second floor, you will find the main double bedroom with skylight/velux with far reaching views over the moors.

Externally, to the front of the property you have a garden, and to the rear a substantial

garden, garage and workshop, with off-road parking.

BOOK YOUR VIEWING NOW!

Ground Floor

Lounge

12' 10" x 11' 7" (3.91m x 3.53m)

Family Room

12' 9" x 10' 8" (3.89m x 3.25m)

Dining Room

8' 7" x 8' 10" (2.62m x 2.69m)

Kitchen

7' 7" x 8' 7" (2.31m x 2.62m)

First Floor

Bedroom Two

11' 9" x 14' 2" (3.58m x 4.32m)

Bedroom Three

11' 7" x 8' 7" (3.53m x 2.62m)

Bedroom Four

7' 2" x 10' 6" (2.18m x 3.20m)

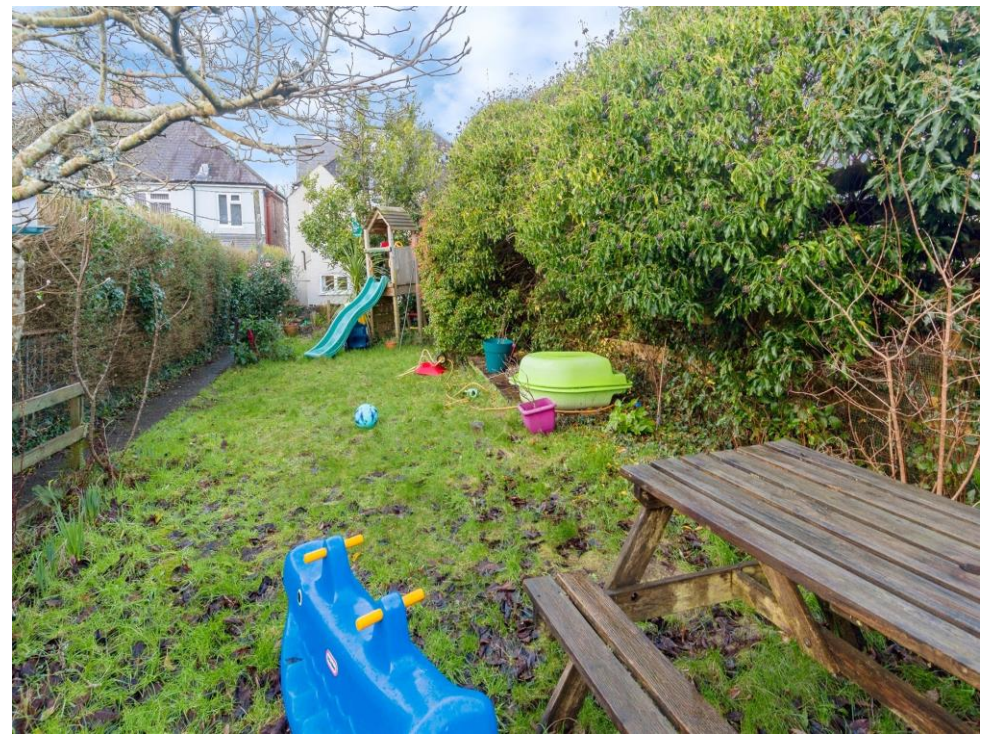
Bathroom

Second Floor

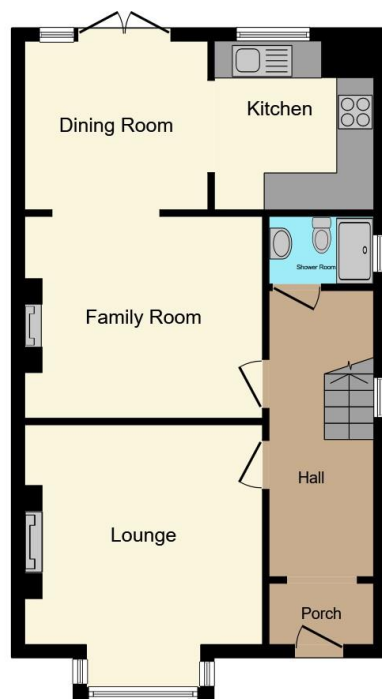
Bedroom One

11' 6" x 18' 6" (3.51m x 5.64m)





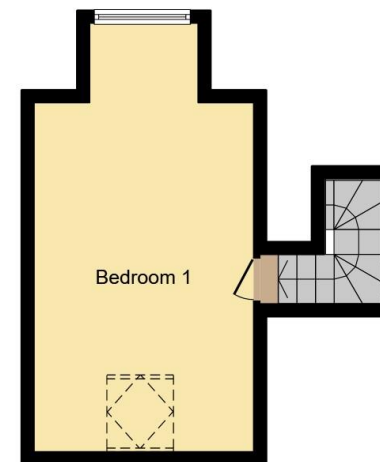




Ground Floor



First Floor



Second Floor

This floor plan is for illustrative purposes only. It is not drawn to scale. Any measurements, floor areas (including any total floor area), openings and orientation are approximate. No details are guaranteed, they cannot be relied upon for any purpose and they do not form part of any agreement. No liability is taken for any error, omission or misstatement. A party must rely upon its own inspection(s). Powered by www.focalagent.com

To view this property please contact Connells on

T 01752 674 467
E plymouth@connells.co.uk

32 Mannamead Road
 PLYMOUTH PL4 7AA

EPC Rating: Awaited

Tenure: Freehold

view this property online connells.co.uk/Property/PLH311634



1. MONEY LAUNDERING REGULATIONS Intending purchasers will be asked to produce identification documentation at a later stage and we would ask for your co-operation in order that there will be no delay in agreeing the sale. 2. These particulars do not constitute part or all of an offer or contract. 3. The measurements indicated are supplied for guidance only and as such must be considered incorrect. Potential buyers are advised to recheck measurements before committing to any expense. 4. We have not tested any apparatus, equipment, fixtures, fittings or services and it is in the buyers interest to check the working condition of any appliances.

Connells Residential is registered in England and Wales under company number 1489613, Registered Office is Cumbria House, 16-20 Hockliffe Street, Leighton Buzzard, Bedfordshire, LU7 1GN. VAT Registration Number is 500 2481 05.

See all our properties at www.connells.co.uk | www.rightmove.co.uk | www.zoopla.co.uk

Property Ref: PLH311634 - 0006