



Connells

Rockwood Road
Plymouth



Property Description

Situated in a tranquil cul-de-sac in the North of Plymouth is this beautifully presented three-bedroom end-terrace family home. Having been recently refurbished throughout this stylish residence features three bedrooms, spacious open plan living, fully integrated kitchen and private enclosed gardens.

Situated approximately four miles north of Plymouth city centre and within easy reach of all local amenities, Schools and Derriford Hospital. The area is minutes from the local Bickleigh Down Primary school, two-day nurseries and the Woolwell community centre perfect for growing families.

Internally the living accommodation is well-proportioned comprising entrance hall leading to;

A Spacious lounge/dining area perfect for socialising with sliding doors opening out to the rear garden. To complete the downstairs is a top of the line fitted kitchen, with a range of integrated appliances.

Upstairs is home to three well-proportioned bedrooms with a stylish modern bathroom suite comprising; Walk-in shower, low level WC, wash hand basin and heated towel rail.

Externally the rear garden is a generous plot, offering a tranquil spot for al-fresco dining & entertaining.

The property is fully equipped with double

glazing, gas central heating, making this a perfect family home and internal viewings are strongly advised!

Entrance Hall

Lounge/Diner

23' 10" x 14' 6" (7.26m x 4.42m)

Kitchen

11' 1" x 9' 1" (3.38m x 2.77m)

First Floor Landing

Bedroom One

11' 6" x 11' 3" (3.51m x 3.43m)

Bedroom Two

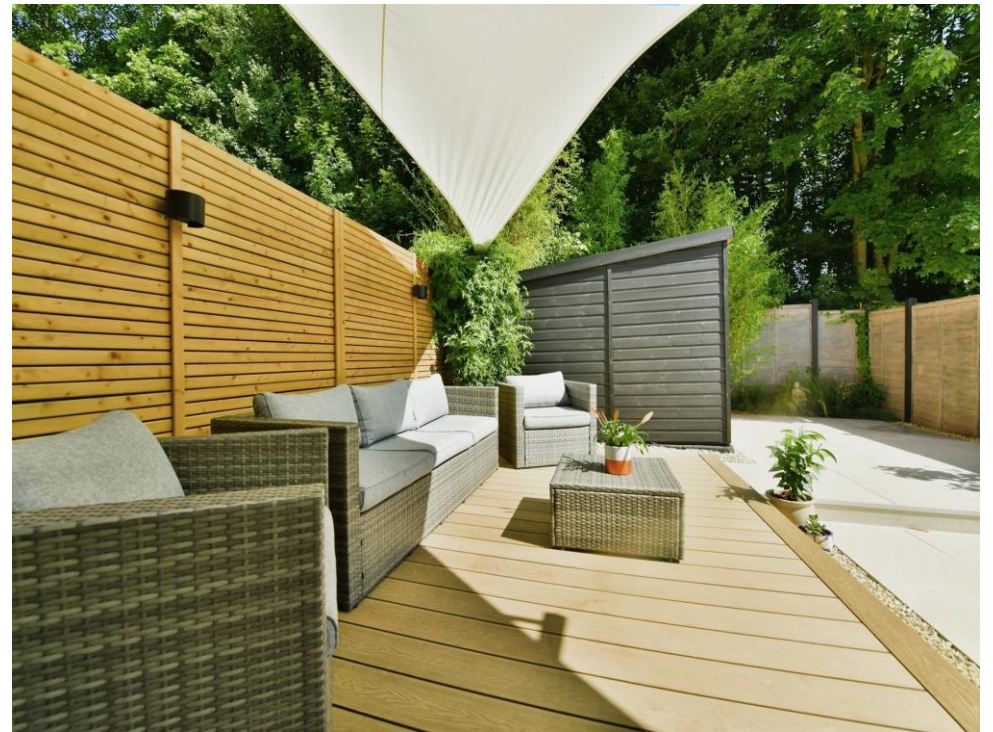
11' 5" x 8' 3" (3.48m x 2.51m)

Bedroom Three

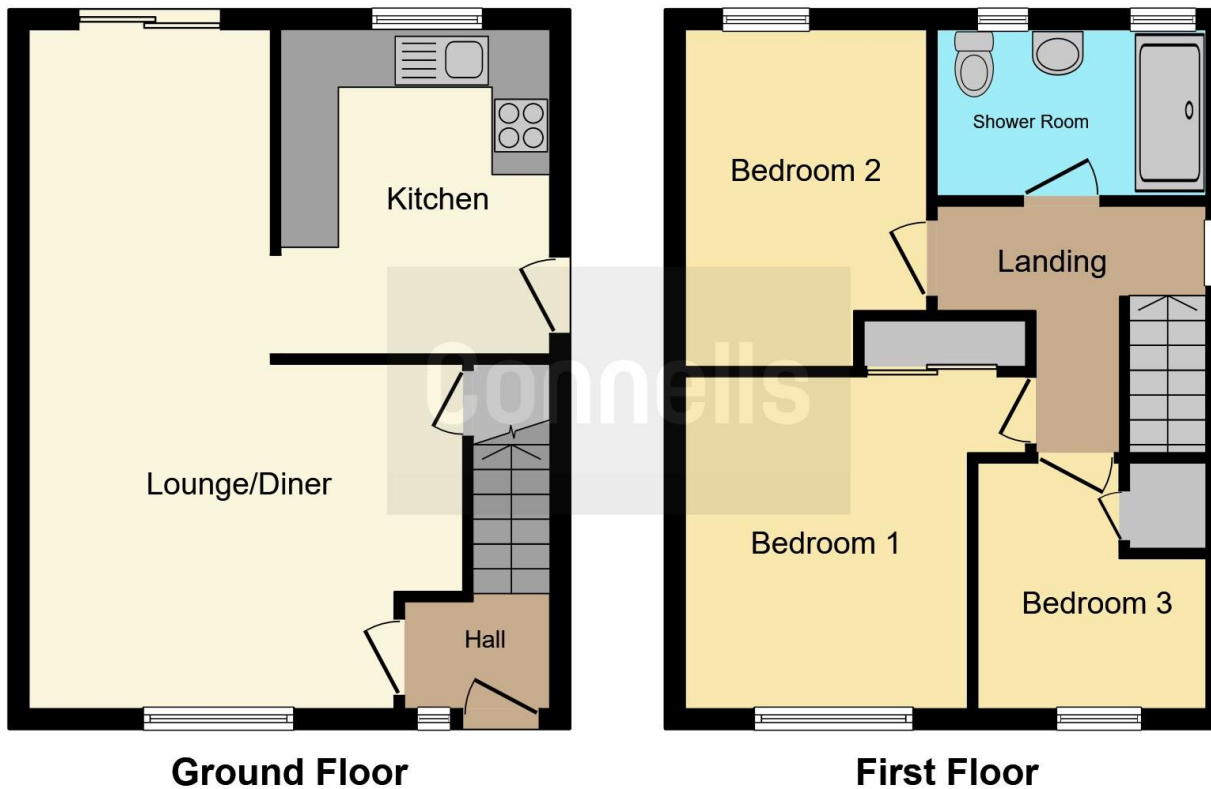
8' 5" x 7' 9" (2.57m x 2.36m)

Bathroom









This floor plan is for illustrative purposes only. It is not drawn to scale. Any measurements, floor areas (including any total floor area), openings and orientation are approximate. No details are guaranteed, they cannot be relied upon for any purpose and they do not form part of any agreement. No liability is taken for any error, omission or misstatement. A party must rely upon its own inspection(s). Powered by www.focalagent.com

To view this property please contact Connells on

T 01752 674 467
E plymouth@connells.co.uk

32 Mannamead Road
 PLYMOUTH PL4 7AA

EPC Rating: D

Tenure: Freehold

view this property online connells.co.uk/Property/PLH310811



1. MONEY LAUNDERING REGULATIONS Intending purchasers will be asked to produce identification documentation at a later stage and we would ask for your co-operation in order that there will be no delay in agreeing the sale. 2. These particulars do not constitute part or all of an offer or contract. 3. The measurements indicated are supplied for guidance only and as such must be considered incorrect. Potential buyers are advised to recheck measurements before committing to any expense. 4. We have not tested any apparatus, equipment, fixtures, fittings or services and it is in the buyers interest to check the working condition of any appliances.

Connells Residential is registered in England and Wales under company number 1489613, Registered Office is Cumbria House, 16-20 Hockliffe Street, Leighton Buzzard, Bedfordshire, LU7 1GN. VAT Registration Number is 500 2481 05.

See all our properties at www.connells.co.uk | www.rightmove.co.uk | www.zoopla.co.uk

Property Ref: PLH310811 - 0005