



Not for marketing purposes INTERNAL USE ONLY

Reddington Road
Plymouth



Property Description

Set within a highly sought after Higher Compton location, close to highly regarded local schools, a good variety of amenities & local services. This wonderful Four bedroom detached property, benefitting from being sat on an extensive plot, master en-suite, integral garage and driveway.

On the ground level you are greeted with a spacious entrance hallway, from here you have access to a beautiful open plan lounge dining room. To complete the ground floor is a well-appointed kitchen, that has a range of matching wall and base units and double glazed window to the rear aspect with beautiful woodland views.

Downstairs landing offers access into all four generous bedrooms, with master benefitting from an en-suite. To complete the lower ground is a well-appointed family bathroom comprising; Bath, W.C and hand basin.

Externally the enclosed rear garden with patio which provides ample space for outdoor entertaining. Complete with a driveway for Two cars and integral garage.

Throughout the home there is some cosmetic updating needed, but with some small changes this would make the most beautiful family home.

Internal viewings advised!

Lounge

11' 5" x 15' 2" (3.48m x 4.62m)

Double glazed window to the front aspect, feature fireplace, carpet flooring, radiator and ceiling light.

Dining Room

9' 5" x 10' 7" (2.87m x 3.23m)

Double glazed window to the rear aspect, carpet flooring, radiator and ceiling light.

Kitchen

10' 7" x 13' 7" (3.23m x 4.14m)

Double glazed window to rear aspect, cushioned flooring and ceiling light.

Range of matching wall and base units, gas hob, gas oven, sink.

Garage

8' 7" x 16' 3" (2.62m x 4.95m)

Bedroom 1

11' 5" x 14' 9" (3.48m x 4.50m)

En-Suite

Bedroom 2

9' 5" x 15' 9" (2.87m x 4.80m)

Double glazed window to rear aspect, carpet flooring, radiator and ceiling light.

Bedroom 3

9' x 12' 1" (2.74m x 3.68m)

Double glazed window to side aspect, carpet

flooring, radiator and ceiling light.

Bedroom 4

7' 9" x 11' 5" (2.36m x 3.48m)

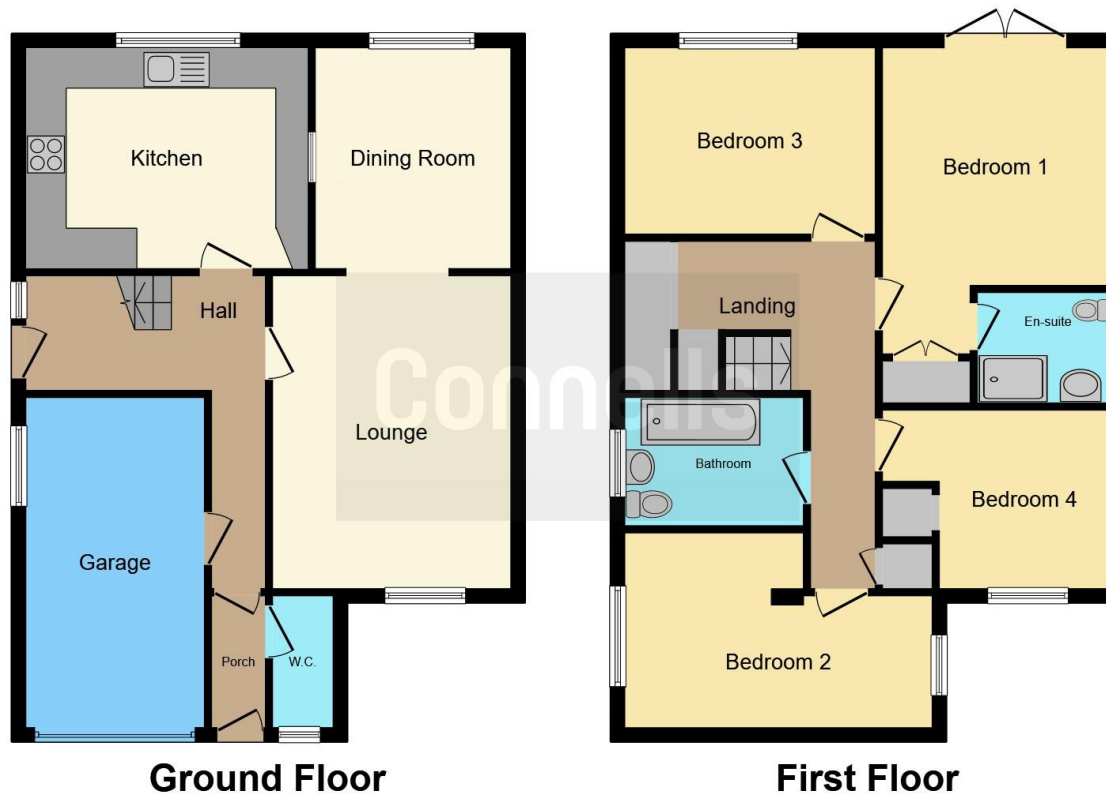
Double glazed window to front aspect, carpet flooring, radiator and ceiling light.

Bathroom









This floor plan is for illustrative purposes only. It is not drawn to scale. Any measurements, floor areas (including any total floor area), openings and orientation are approximate. No details are guaranteed, they cannot be relied upon for any purpose and they do not form part of any agreement. No liability is taken for any error, omission or misstatement. A party must rely upon its own inspection(s). Powered by www.focalagent.com

To view this property please contact Connells on

T 01752 674 467
E plymouth@connells.co.uk

32 Mannamead Road
 PLYMOUTH PL4 7AA

EPC Rating: C

Tenure: Freehold

[check out more properties at connells.co.uk](http://connells.co.uk)



1. MONEY LAUNDERING REGULATIONS Intending purchasers will be asked to produce identification documentation at a later stage and we would ask for your co-operation in order that there will be no delay in agreeing the sale. 2. These particulars do not constitute part or all of an offer or contract. 3. The measurements indicated are supplied for guidance only and as such must be considered incorrect. Potential buyers are advised to recheck measurements before committing to any expense. 4. We have not tested any apparatus, equipment, fixtures, fittings or services and it is in the buyers interest to check the working condition of any appliances.

Connells Residential is registered in England and Wales under company number 1489613, Registered Office is Cumbria House, 16-20 Hockliffe Street, Leighton Buzzard, Bedfordshire, LU7 1GN. VAT Registration Number is 500 2481 05.

See all our properties at www.connells.co.uk | www.rightmove.co.uk | www.zoopla.co.uk

Property Ref: PLH310504 - 0004