



Not for marketing purposes INTERNAL USE ONLY

Sonnet Close  
Plymouth



## Property Description

**\*\*No Onward Chain\*\*** Immaculate Three Bedroom End Terraced Home with Off road parking, private and enclosed rear garden, master en-suite and downstairs W.C. Situated in an exclusive development in popular location of Manadon, offering easy access to Derriford Hospital and vibrant City Centre.

The property comprises; entrance hall leading to a spacious lounge, with double glazed window to the front aspect, an open plan modern kitchen/diner with integrated appliances with French doors to rear garden which is laid in patio. To complete the ground floor is the downstairs WC.

On the first floor there are three ample sized bedrooms with the master offering a en-suite and a family bathroom with a modern suite including a WC, wash hand basin and bath.

Externally the property has off-road parking to the front, while to the rear is a private and level rear garden perfect for entertaining.

Internal Viewings Are Strongly Advised!

## Lounge

9' 1" x 14' 6" ( 2.77m x 4.42m )

Double glazed windows to the front aspect, media wall and radiator

## Kitchen/Diner

10' 7" x 17' 4" ( 3.23m x 5.28m )

Modern fitted kitchen with matching base and

wall units, double glazed window with french double glazed patio doors to rear garden.

## Downstairs W.C

### Bedroom 1

9' 7" x 10' 4" ( 2.92m x 3.15m )

Double glazed window to the front aspect, carpet and en-suite

### Master En-Suite

Shower, W.C and hand basin

### Bedroom 2

9' 6" x 10' 6" ( 2.90m x 3.20m )

Double glazed window to the rear aspect and carpet.

### Bedroom 3

7' 4" x 8' 8" ( 2.24m x 2.64m )

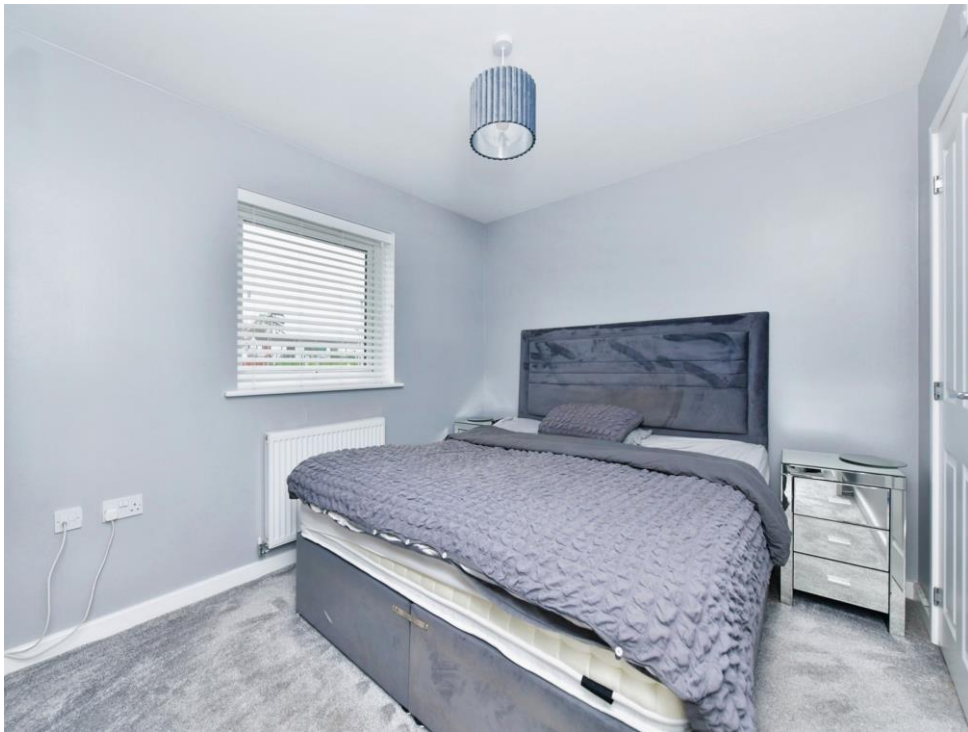
Double glazed window to rear of aspect, carpet and radiator

## Bathroom

W.C, hand basin and bath

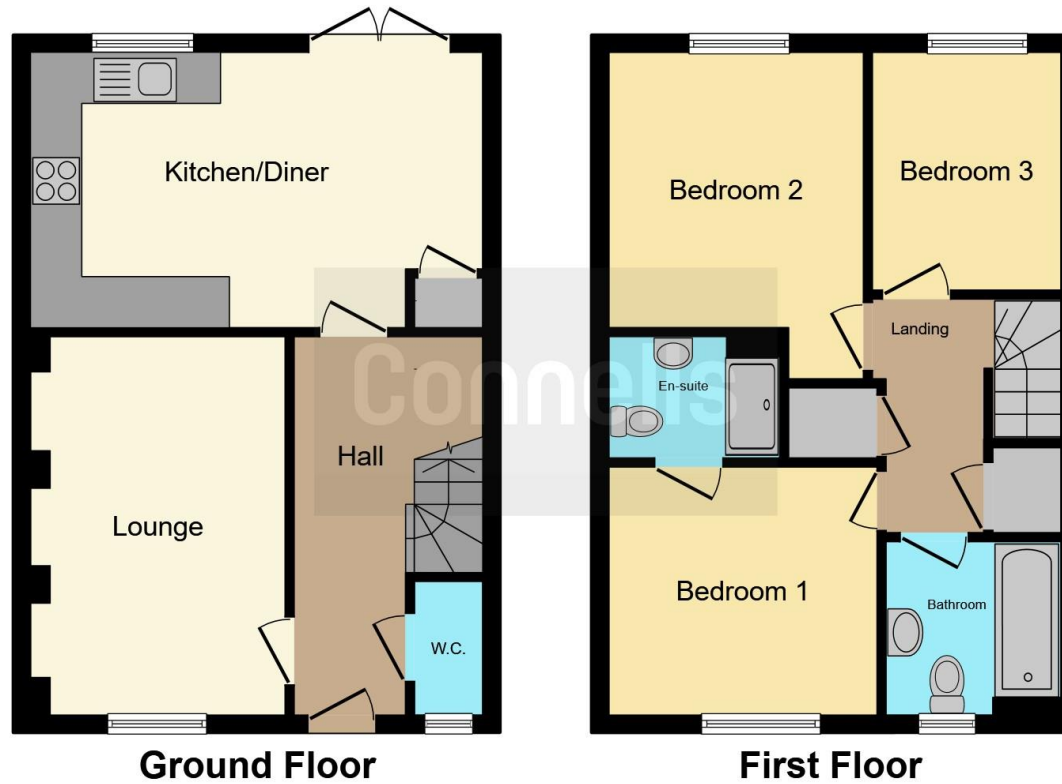












This floor plan is for illustrative purposes only. It is not drawn to scale. Any measurements, floor areas (including any total floor area), openings and orientation are approximate. No details are guaranteed, they cannot be relied upon for any purpose and they do not form part of any agreement. No liability is taken for any error, omission or misstatement. A party must rely upon its own inspection(s). Powered by [www.focalagent.com](http://www.focalagent.com)

To view this property please contact Connells on

**T 01752 674 467**  
**E [plymouth@connells.co.uk](mailto:plymouth@connells.co.uk)**

32 Mannamead Road  
 PLYMOUTH PL4 7AA

**EPC Rating: B**

Tenure: Freehold

**[check out more properties at connells.co.uk](http://connells.co.uk)**



1. MONEY LAUNDERING REGULATIONS Intending purchasers will be asked to produce identification documentation at a later stage and we would ask for your co-operation in order that there will be no delay in agreeing the sale. 2. These particulars do not constitute part or all of an offer or contract. 3. The measurements indicated are supplied for guidance only and as such must be considered incorrect. Potential buyers are advised to recheck measurements before committing to any expense. 4. We have not tested any apparatus, equipment, fixtures, fittings or services and it is in the buyers interest to check the working condition of any appliances.

Connells Residential is registered in England and Wales under company number 1489613, Registered Office is Cumbria House, 16-20 Hockliffe Street, Leighton Buzzard, Bedfordshire, LU7 1GN. VAT Registration Number is 500 2481 05.

**See all our properties at [www.connells.co.uk](http://www.connells.co.uk) | [www.rightmove.co.uk](http://www.rightmove.co.uk) | [www.zoopla.co.uk](http://www.zoopla.co.uk)**

Property Ref: PLH310557 - 0002