



Connells

Grenville Road
Plymouth



Property Description

****Offered To Market With No Onward Chain****
Situated in a prime central location, this deceptively spacious Three double bedroom Victorian residence in need of refurbishment throughout. The property would suit any buyer looking for an affordable yet charming house to make their own.

Off the entrance hallway you have a spacious living room with a beautiful bay window to the front, a versatile second reception room and a generous kitchen/breakfast room.

Upstairs you will find three double bedrooms, a family bathroom with separate W.C

Externally the property offers a spacious low maintenance courtyard, with a convenient and useful basement.

In need of some modernisation throughout this would suit any buyer looking for an affordable yet charming house and make a property their own.

Lounge

13' 6" extending to x 15' 1" (4.11m extending to x 4.60m)

Dining Room

10' 9" x 11' (3.28m x 3.35m)

Kitchen

9' 7" x 14' 9" (2.92m x 4.50m)

Basement

12' x 16' 9" (3.66m x 5.11m)

Bedroom 1

12' 1" extending to x 15' (3.68m extending to x 4.57m)

Bedroom 2

10' 8" x 12' 6" (3.25m x 3.81m)

Bedroom 3

9' 7" x 11' 9" (2.92m x 3.58m)

Bathroom

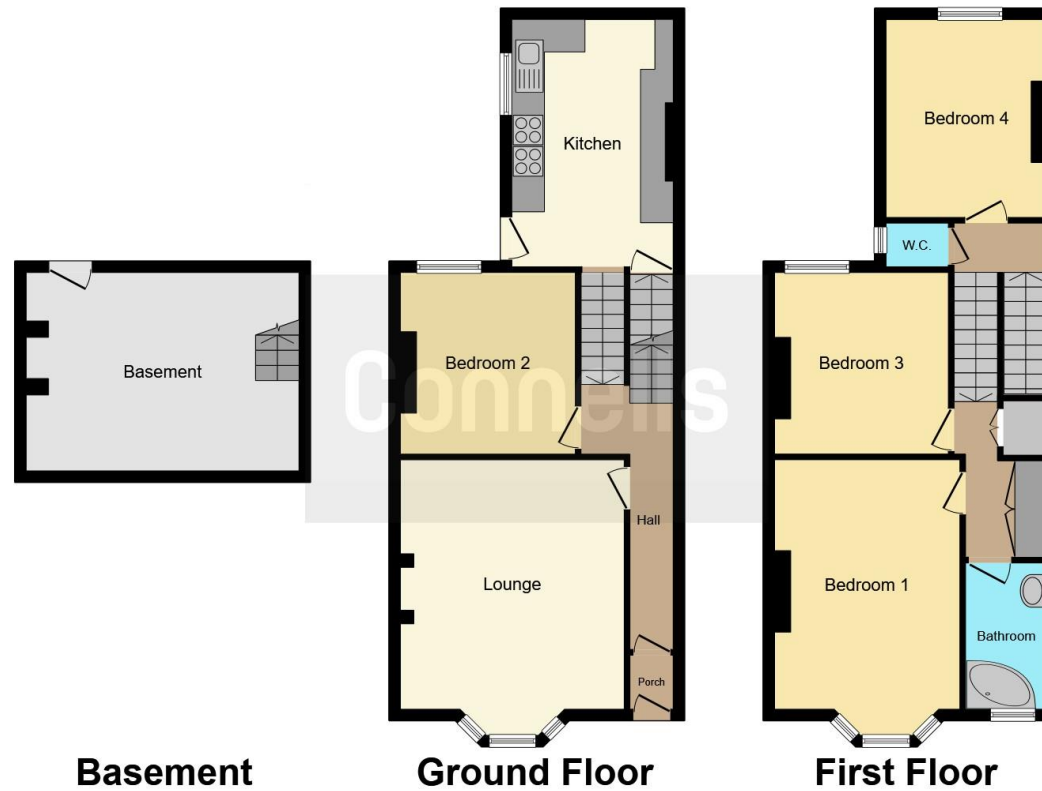
4' 9" x 8' 8" (1.45m x 2.64m)

W.C









This floor plan is for illustrative purposes only. It is not drawn to scale. Any measurements, floor areas (including any total floor area), openings and orientation are approximate. No details are guaranteed, they cannot be relied upon for any purpose and they do not form part of any agreement. No liability is taken for any error, omission or misstatement. A party must rely upon its own inspection(s). Powered by www.focalagent.com

To view this property please contact Connells on

T 01752 674 467
E plymouth@connells.co.uk

32 Mannamead Road
 PLYMOUTH PL4 7AA

EPC Rating: D

Tenure: Freehold

[check out more properties at connells.co.uk](http://www.connells.co.uk)



1. MONEY LAUNDERING REGULATIONS Intending purchasers will be asked to produce identification documentation at a later stage and we would ask for your co-operation in order that there will be no delay in agreeing the sale. 2. These particulars do not constitute part or all of an offer or contract. 3. The measurements indicated are supplied for guidance only and as such must be considered incorrect. Potential buyers are advised to recheck measurements before committing to any expense. 4. We have not tested any apparatus, equipment, fixtures, fittings or services and it is in the buyers interest to check the working condition of any appliances.

Connells Residential is registered in England and Wales under company number 1489613, Registered Office is Cumbria House, 16-20 Hockliffe Street, Leighton Buzzard, Bedfordshire, LU7 1GN. VAT Registration Number is 500 2481 05.

See all our properties at www.connells.co.uk | www.rightmove.co.uk | www.zoopla.co.uk

Property Ref: PLH310331 - 0003