

for sale

offers in the region of **£230,000** Freehold



Cotton Lane Birmingham B13 9SE

This spacious first floor apartment is located close to the desirable location of MOSELEY VILLAGE. The apartment has TWO DOUBLE BEDROOMS, a large lounge, good-sized kitchen and family bathroom. The property has ALLOCATED PARKING, communal gardens and secure entry.

Residential Sales & Lettings | Mortgage Services |
Conveyancing | Surveyors | Land & New Homes

- Energy Rating: Awaited
- First Floor Apartment
- Large Reception Room
- Two Double Bedrooms , One with Ensuite
- Fitted Kitchen

Property Details

Entrance Porch /Hall

- Radiator
- Storage Cupboard x 2

Lounge/Reception Room 17' 10" x 13' 10" (5.44m x 4.22m)

- Double Glazed Window x 3
- Radiator x 2
- Electric Fireplace

Kitchen 14' x 6' 11" (4.27m x 2.11m)

- Double Glazed Window
- Radiator
- Gas Hob/Oven and Hood
- Double Bowl Sink

Bedroom One with Ensuite 12' 7" x 9' 4" (3.84m x 2.84m)

- Double Glazed Window
- Radiator
- Cupboards x 2
- Ensuite with Shower cubicle , Basin and Toilet

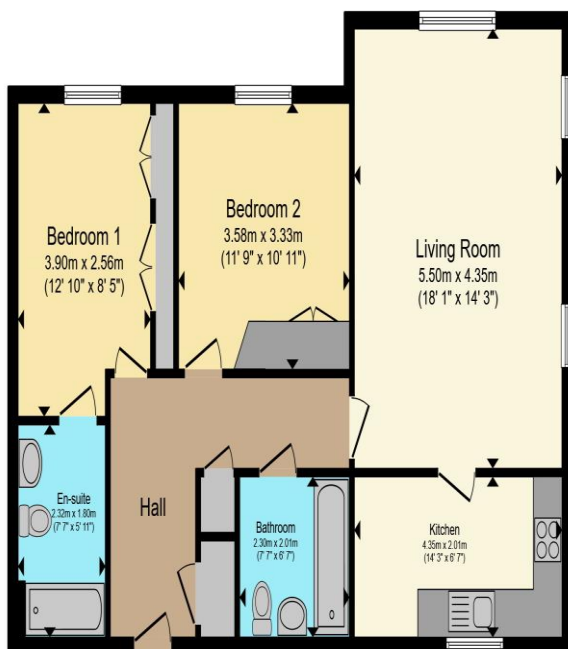
Bedroom Two 11' 8" x 8' 11" (3.56m x 2.72m)

- Double Glazed Window
- Radiator
- Cupboard

Bathroom

- Bath
- Basin
- Toilet





Total floor area 80.1 m² (862 sq.ft.) approx

This floor plan is for illustrative purposes only. It is not drawn to scale. Any measurements, floor areas (including any total floor area), openings and orientation are approximate. No details are guaranteed, they cannot be relied upon for any purpose and they do not form part of any agreement. No liability is taken for any error, omission or misstatement. A party must rely upon its own inspection(s). Powered by www.propertybox.io



To view this property please contact Connells on

T 0121 443 3357
E kingsheath@connells.co.uk

93 High Street Kings Heath
 BIRMINGHAM B14 7BW

Property Ref: KTH310816 - 0002

Tenure: Freehold EPC Rating: Awaited

Council Tax Band: D

1. MONEY LAUNDERING REGULATIONS Intending purchasers will be asked to produce identification documentation at a later stage and we would ask for your co-operation in order that there will be no delay in agreeing the sale. 2. These particulars do not constitute part or all of an offer or contract. 3. The measurements indicated are supplied for guidance only and as such must be considered incorrect. Potential buyers are advised to recheck measurements before committing to any expense. 4. We have not tested any apparatus, equipment, fixtures, fittings or services and it is in the buyers interest to check the working condition of any appliances.

Connells Residential is registered in England and Wales under company number 1489613, Registered Office is Cumbria House, 16-20 Hockliffe Street, Leighton Buzzard, Bedfordshire, LU7 1GN. VAT Registration Number is 500 2481 05.

see all our properties at www.connells.co.uk | www.rightmove.co.uk | www.zoopla.co.uk