

for sale

offers in excess of **£355,000** Freehold



## Eaton Road BIRMINGHAM B11 3JF

The property benefits from a LARGE LOUNGE, a kitchen/diner, downstairs W.C., upstairs family bathroom, and master bedroom with an EN SUITE. A MODERN three-bedroom property in a quiet area. There are good schools nearby, plenty of green spaces, and FANTASTIC TRANSPORT links. An IDEAL FAMILY HOME.

Residential Sales & Lettings | Mortgage Services |  
Conveyancing | Surveyors | Land & New Homes



# Property Details

## Entrance Hall

Double glazed door to front access, wall mounted radiator, stairs to first floor, doors to

## Living Room 19' 2" x 10' 1" ( 5.84m x 3.07m )

Double glazed window to front, double glazed patio doors to rear garden, wall mounted radiator.

## Kitchen/Diner 18' 5" x 9' 2" min ( 5.61m x 2.79m min )

One double glazed window to front, two double glazed windows to side, range of wall and base units, electric oven, integrated gas hob with hood, one and half bowl sink with drainer, plumbing for dishwasher, two wall mounted radiators, storage cupboard, door to

## Utility Room 6' 2" x 5' 2" ( 1.88m x 1.57m )

Double glazed door to rear garden, plumbing for washing machine, space for dryer, central heating boiler, wall mounted radiator, door to

## W.C.

Low level W.C., hand wash basin, wall mounted radiator.

## First Floor Landing

Double glazed window to rear, wall mounted radiator, loft access, storage cupboard, doors to

## Bedroom One 18' 6" max x 10' 3" ( 5.64m max x 3.12m )

Double glazed window to front, double glazed window to rear, wall mounted radiator, door to

## En Suite

Double glazed window to front, low level W.C., hand wash basin, shower cubicle, wall mounted radiator.

## Bedroom Two 9' 2" x 7' 6" ( 2.79m x 2.29m )

Double glazed window to rear, double glazed window to side, wall mounted radiator.

## Bedroom Three 10' 8" x 8' 4" ( 3.25m x 2.54m )

Double glazed window to front, double glazed window to side, wall mounted radiator.

## Family Bathroom

Double glazed window to front, low level W.C., hand wash basin, bathtub with electric shower over tub, wall mounted radiator.

## Rear Garden

Lawned rear garden with patio area and decking, side gate access.

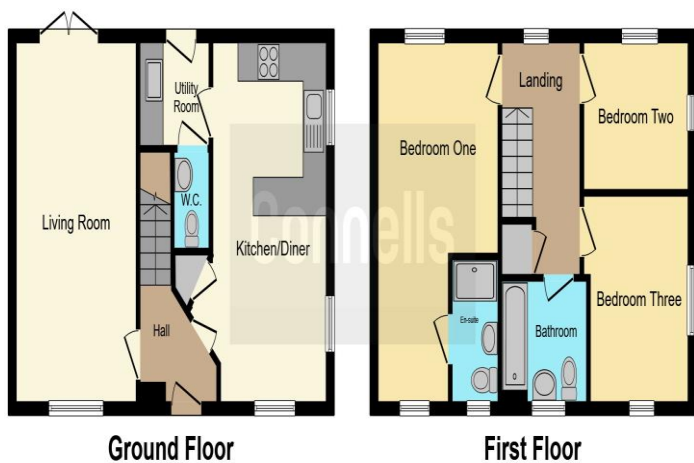
## Front Access

Drive way leading up to garage.

## Garage 19' 6" x 9' 8" ( 5.94m x 2.95m )

Single car garage.





To view this property please contact Connells on

**T 0121 443 3357**  
**E [kingsheath@connells.co.uk](mailto:kingsheath@connells.co.uk)**

93 High Street Kings Heath  
 BIRMINGHAM B14 7BW

Property Ref: KTH310645 - 0004

Tenure:Freehold EPC Rating: B

Council Tax Band: C

This floor plan is for illustrative purposes only. It is not drawn to scale. Any measurements, floor areas (including any total floor area), openings and orientation are approximate. No details are guaranteed, they cannot be relied upon for any purpose and they do not form part of any agreement. No liability is taken for any error, omission or misstatement. A party must rely upon its own inspection(s). Powered by [www.focalagent.com](http://www.focalagent.com)

1. MONEY LAUNDERING REGULATIONS Intending purchasers will be asked to produce identification documentation at a later stage and we would ask for your co-operation in order that there will be no delay in agreeing the sale. 2. These particulars do not constitute part or all of an offer or contract. 3. The measurements indicated are supplied for guidance only and as such must be considered incorrect. Potential buyers are advised to recheck measurements before committing to any expense. 4. We have not tested any apparatus, equipment, fixtures, fittings or services and it is in the buyers interest to check the working condition of any appliances.

Connells Residential is registered in England and Wales under company number 1489613, Registered Office is Cumbria House, 16-20 Hockliffe Street, Leighton Buzzard, Bedfordshire, LU7 1GN. VAT Registration Number is 500 2481 05.

see all our properties at [www.connells.co.uk](http://www.connells.co.uk) | [www.rightmove.co.uk](http://www.rightmove.co.uk) | [www.zoopla.co.uk](http://www.zoopla.co.uk)