

for sale

offers in the region of **£160,000** Leasehold



Yardley Wood Road Birmingham B13 9JT

End Terrace House, Lounge Diner, Kitchen,
Three Bedrooms, Bathroom, Separate W.C,
Rear Garden and a Garage to the Rear



Residential Sales & Lettings | Mortgage Services |
Conveyancing | Surveyors | Land & New Homes

Property Details

Entrance Hall

Single glazed window to the front, stairs to the first floor landing, door to the side and door into

Lounge Diner 28' 8" max x 13' 6" max (8.74m max x 4.11m max)

Single glazed window to the front and rear, storage cupboard and door to

Kitchen 9' 6" x 8' 10" (2.90m x 2.69m)

Single glazed window to the rear, door to the rear, wall and base units with single drainer sink

First Floor Landing

Access to the loft and doors to

Bedroom 1 14' 8" x 8' 2" (4.47m x 2.49m)

Single glazed window to the rear

Bedroom 2 12' 5" x 8' 11" (3.78m x 2.72m)

Single glazed window to the front

Bedroom 3 9' 4" x 7' 7" (2.84m x 2.31m)

Single glazed window to the front

Bathroom

Single glazed window to the rear, bath, hand wash basin and storage cupboard housing a hot water tank

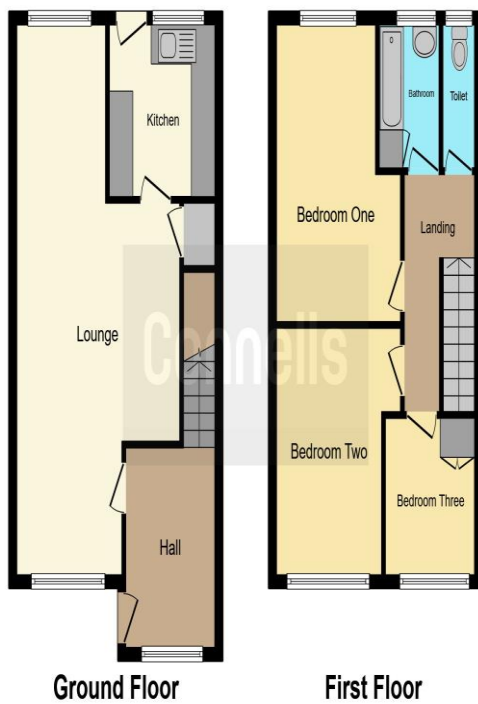
W.C

Single glazed window to the rear and low level w.c

External

There are gardens to both the front and rear





This floor plan is for illustrative purposes only. It is not drawn to scale. Any measurements, floor areas (including any total floor area), openings and orientation are approximate. No details are guaranteed, they cannot be relied upon for any purpose and they do not form part of any agreement. No liability is taken for any error, omission or misstatement. A party must rely upon its own inspection(s). Powered by www.focalagent.com

To view this property please contact Connells on

T 0121 443 3357
E kingsheath@connells.co.uk

93 High Street Kings Heath
 BIRMINGHAM B14 7BW

Tenure: Leasehold

EPC Rating: E

Property Ref: KTH309507 - 0005

This is a Leasehold property. We are awaiting further details about the Term of the lease. For further information please contact the branch. Please note additional fees could be incurred for these such as Leasehold costs.

1. MONEY LAUNDERING REGULATIONS Intending purchasers will be asked to produce identification documentation at a later stage and we would ask for your co-operation in order that there will be no delay in agreeing the sale. 2. These particulars do not constitute part or all of an offer or contract. 3. The measurements indicated are supplied for guidance only and as such must be considered incorrect. Potential buyers are advised to recheck measurements before committing to any expense. 4. We have not tested any apparatus, equipment, fixtures, fittings or services and it is in the buyers interest to check the working condition of any appliances.

Connells Residential is registered in England and Wales under company number 1489613, Registered Office is Cumbria House, 16-20 Hockliffe Street, Leighton Buzzard, Bedfordshire, LU7 1GN. VAT Registration Number is 500 2481 05.

see all our properties at www.connells.co.uk | www.rightmove.co.uk | www.zoopla.co.uk