

for sale

offers over **£210,000** Freehold



Lifford Close Birmingham B14 6QL

Mid terrace home, lounge, kitchen diner, three generous bedrooms, en-suite shower to master bedroom, family shower room and separate w.c, front and rear gardens



Residential Sales & Lettings | Mortgage Services |
Conveyancing | Surveyors | Land & New Homes

Property Details

Porch

Single glazed window to the front, UPVC door to the side and door to

Entrance Hall

Stairs rising to the first floor landing and doors to

Lounge 18' 5" x 10' 5" (5.61m x 3.17m)

Double glazed window to the front, double glazed sliding door to the rear, electric fire and surround, wall mounted radiator

Kitchen Diner 18' 7" x 11' 9" narrowing to 8' 7" (5.66m x 3.58m narrowing to 2.62m)

Double glazed window to the front and rear, door to the rear and lounge, a range of wall and base units incorporating a dishwasher, electric oven, gas hob with hood over, washing machine and wall mounted radiator

First Floor Landing

Access to the loft area, wall mounted radiator, storage cupboard housing the central heating boiler and doors to

Bedroom 1 12' 8" x 8' 8" (3.86m x 2.64m)

Double glazed window to the front, wall mounted radiator, shower cubicle with electric shower

Bedroom 2 10' 9" x 9' 5" (3.28m x 2.87m)

Double glazed window to the front and wall mounted radiator

Bedroom 3 8' 11" x 7' 6" (2.72m x 2.29m)

Double glazed window to the rear and wall mounted radiator

Shower Room

Double glazed obscure window to the rear, walk in shower cubicle with mixer shower, hand wash basin and heated towel rail

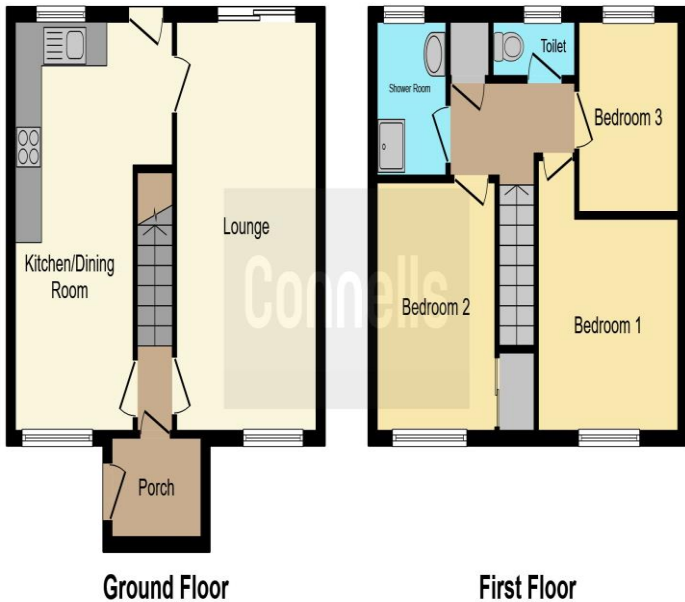
Separate W.C

Double glazed obscure window to the rear and a low level w.c

Externally

To the front is a pebbled garden. whilst to the rear is a patio with lawn, brick shed and rear gate access





To view this property please contact Connells on

T 0121 443 3357
E kingsheath@connells.co.uk

93 High Street Kings Heath
BIRMINGHAM B14 7BW

Tenure: Freehold

EPC Rating: C

Property Ref: KTH309245 - 0007

This floorplan is for illustrative purposes only and is not drawn to scale. Measurements, floor-areas, openings and orientations are approximate. They should not be relied upon for any purpose and do not form any part of an agreement. No liability is taken for any error or mis-statement. All parties must rely on their own inspections.

1. MONEY LAUNDERING REGULATIONS Intending purchasers will be asked to produce identification documentation at a later stage and we would ask for your co-operation in order that there will be no delay in agreeing the sale. 2. These particulars do not constitute part or all of an offer or contract. 3. The measurements indicated are supplied for guidance only and as such must be considered incorrect. Potential buyers are advised to recheck measurements before committing to any expense. 4. We have not tested any apparatus, equipment, fixtures, fittings or services and it is in the buyers interest to check the working condition of any appliances.

Connells Residential is registered in England and Wales under company number 1489613, Registered Office is Cumbria House, 16-20 Hockliffe Street, Leighton Buzzard, Bedfordshire, LU7 1GN. VAT Registration Number is 500 2481 05.

see all our properties at www.connells.co.uk | www.rightmove.co.uk | www.zoopla.co.uk