



Connells

Grange Walk
Northfield



Property Description

Tucked away in a quiet cul-de-sac, this delightful property truly is a hidden gem. Set over three spacious floors, the home offers a versatile layout perfect for modern family living.

Upon entering, you are greeted by a welcoming hallway with a convenient guest cloakroom. The ground floor boasts a fitted kitchen and inviting reception room, ideal for relaxing or entertaining.

On the first floor, you will find a spacious lounge, the king sized master bedroom with its own en-suite shower room. On the second floor there are two additional king sized bedroom with a house bathroom.

The rear of the property reveals a beautiful garden, providing a stunning outdoor space for dining, gardening, or simply unwinding in the sunshine. The home also benefits from two dedicated parking spaces, ensuring ease and convenience.

This home's sought-after location, combined with its thoughtful design and charming presentation, makes it a fantastic opportunity for those seeking comfort, style, and tranquillity.

Approach

Set in a cul-de-sac location behind two parking spaces stand this stunning three storey home.

Entrance Hallway

Ceiling light point, panelled radiator, laminated flooring, stairs off.

Kitchen

Matching wall and base units, sink with drainer and mixer tap, 4 ring gas hob, oven extractor fan, space for fridge freezer, ceiling light point, part tiled, window to front, tiled flooring, panelled radiator.

Guest Cloakroom

low flush w.c, hand wash basin, panelled radiator, ceiling light point.

Reception Room

Ceiling light point, panelled radiator, laminated flooring, french doors to rear garden.

First Floor Landing

Ceiling light point, panelled radiator.

Bedroom One

Ceiling light point, panelled radiator, built in mirrored wardrobe, French doors onto Juliette balcony, door onto ensuite.

Ensuite

Ceiling light point, panelled radiator, fully tiled shower cubicle, low flush w.c, hand wash basin, storage cupboard.

First Floor Lounge

Ceiling lights, panelled radiator, tv point, French doors onto balcony.

Second Floor Landing

Ceiling light point, panelled radiator, loft access, skylight

Bedroom Two

Ceiling light point, panelled radiator, skylight, window to front.

Bedroom Three

Ceiling light point, panelled radiator, French doors onto Juliette balcony.

Second Floor Bathroom

Ceiling light point, panelled radiator, panelled bath with shower over, low flush w.c, hand wash basin, part tiled.

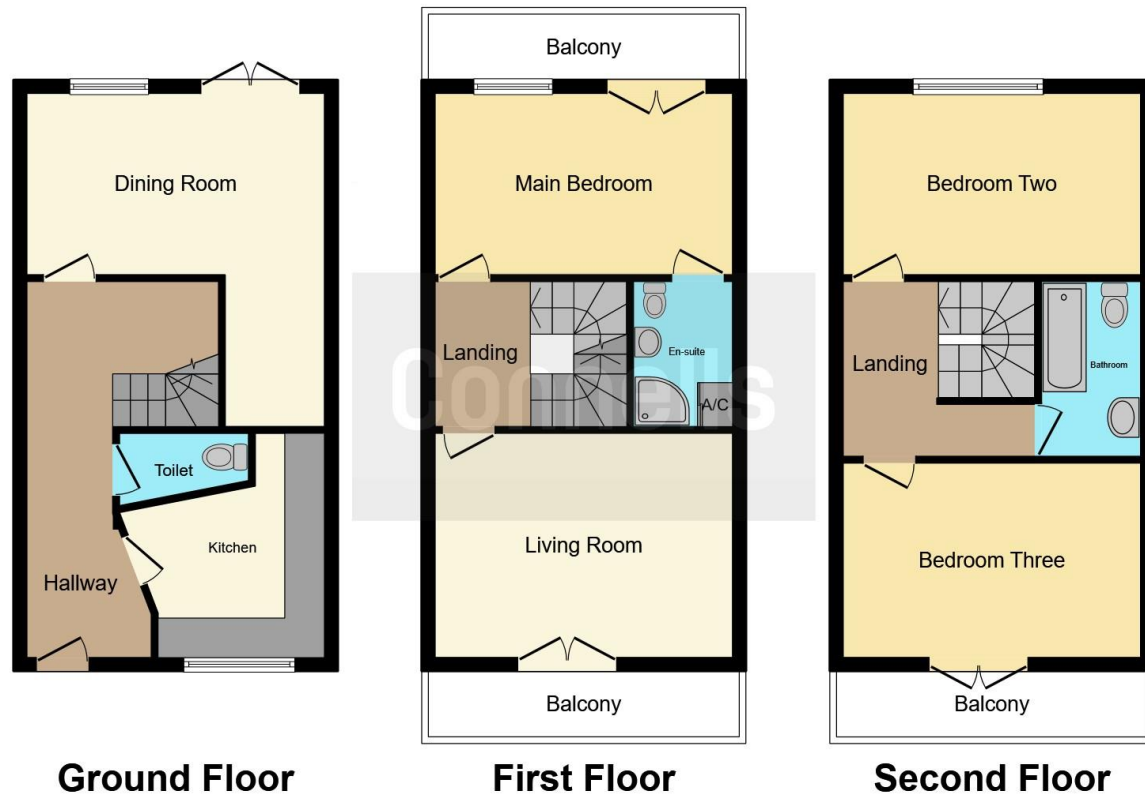
Rear Garden

Patio area, steps down to lawned area with mature trees, shrubbery, timber fence surround, garden shed.









This floor plan is for illustrative purposes only. It is not drawn to scale. Any measurements, floor areas (including any total floor area), openings and orientation are approximate. No details are guaranteed, they cannot be relied upon for any purpose and they do not form part of any agreement. No liability is taken for any error, omission or misstatement. A party must rely upon its own inspection(s). Powered by www.focalagent.com

To view this property please contact Connells on

T 0121 426 2800
E harborne@connells.co.uk

158 High Street Harborne
 BIRMINGHAM B17 9QE

EPC Rating: Awaited
 Council Tax Band: D

Tenure: Freehold

[check out more properties at connells.co.uk](http://connells.co.uk)



1. MONEY LAUNDERING REGULATIONS Intending purchasers will be asked to produce identification documentation at a later stage and we would ask for your co-operation in order that there will be no delay in agreeing the sale. 2. These particulars do not constitute part or all of an offer or contract. 3. The measurements indicated are supplied for guidance only and as such must be considered incorrect. Potential buyers are advised to recheck measurements before committing to any expense. 4. We have not tested any apparatus, equipment, fixtures, fittings or services and it is in the buyers interest to check the working condition of any appliances.

Connells Residential is registered in England and Wales under company number 1489613, Registered Office is Cumbria House, 16-20 Hockliffe Street, Leighton Buzzard, Bedfordshire, LU7 1GN. VAT Registration Number is 500 2481 05.

See all our properties at www.connells.co.uk | www.rightmove.co.uk | www.zoopla.co.uk

Property Ref: HBO310426 - 0002