



Connells

Ridgmont Croft
Quinton



Property Description

This modern family home, nestled in a cul-de-sac, offers an idyllic blend of contemporary design and comfortable living. Originally constructed with three bedrooms, this thoughtfully redesigned property now features two spacious double bedrooms, ensuring ample space and privacy. The master bedroom is a complete with a stylish en-suite, while an additional first-floor bathroom serves the household with convenience and elegance.

The heart of the home is the open plan living area, seamlessly integrating the kitchen, dining, and living spaces. This layout promotes a warm, communal atmosphere, perfect for family gatherings and entertaining guests. Large windows and thoughtful design elements flood the space with natural light, enhancing the airy, modern feel.

Outside, the property boasts easily maintained gardens at both the front and rear, offering pleasant outdoor spaces for relaxation and recreation without the burden of extensive upkeep. The rear garden provides a private oasis, ideal for alfresco dining or a quiet retreat from the bustle of daily life.

Offered with no chain, this home represents a streamlined opportunity for prospective buyers, allowing for a swift and straightforward purchase process. With its blend of modern amenities, thoughtful design, and desirable location, this property is a perfect choice for those seeking a contemporary family home.

Approach

Set behind a grassed verge area, step up approach to the main accommodation.

Entrance Hallway

Staircase off, ceiling light point, door off.

Open Plan Living

Lounge:

comprising of panelled radiator, ceiling light point, double glazed window to front elevation, t.v point, laminated flooring.

Dining / Kitchen

Fitted with a range of matching wall and base units, integrated gas hob, oven and extractor fan, wall mounted boiler, sink with drainer, stylish tiled floor, panelled radiator double glazed window and french doors onto the garden, door leading to guest cloak room comprising of low flush w.c, wash hand basin, ceiling light point.

Landing

Ceiling light point, doors off.

Bedroom One

Two double glazed windows, ceiling light point, panelled radiator, door to en-suite comprising of walk-in shower cubicle, low flush w.c, stylish sink unit with storage, part tiling.

Bedroom Two

Double glazed window, ceiling light point, panelled radiator.

Bathroom

Panelled bath with shower over, hand wash basin, low flush w.c, panelled radiator, ceiling light point, panelled radiator.

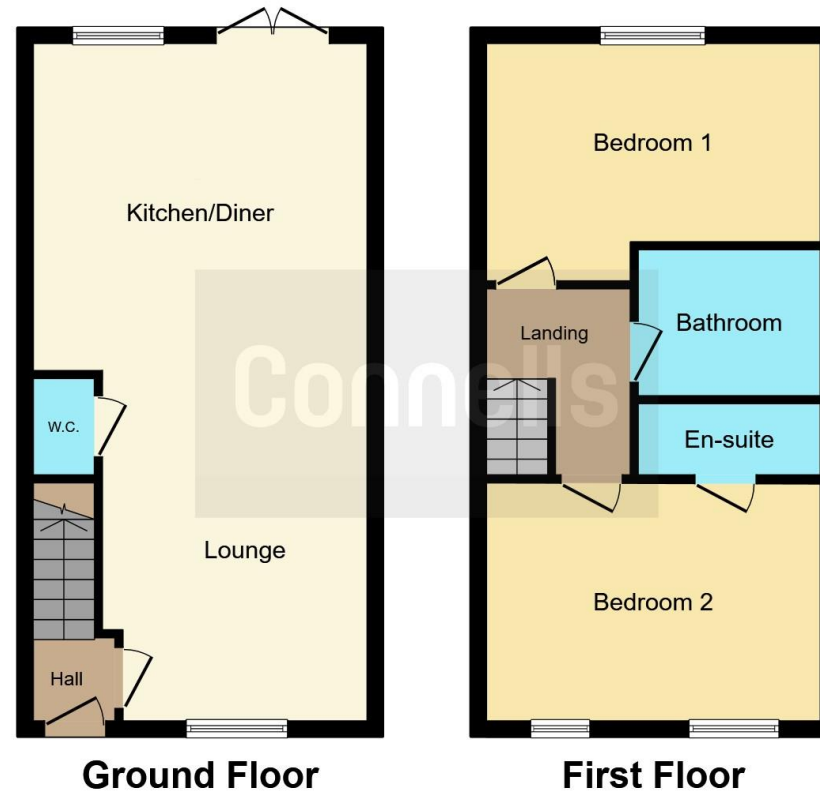
Rear Garden

Low maintenance rear garden, mainly paved with a feature decked area.









This floor plan is for illustrative purposes only. It is not drawn to scale. Any measurements, floor areas (including any total floor area), openings and orientation are approximate. No details are guaranteed, they cannot be relied upon for any purpose and they do not form part of any agreement. No liability is taken for any error, omission or misstatement. A party must rely upon its own inspection(s). Powered by www.focalagent.com

To view this property please contact Connells on

T 0121 426 2800
E harborne@connells.co.uk

158 High Street Harborne
 BIRMINGHAM B17 9QE

EPC Rating: C

Tenure: Freehold

view this property online connells.co.uk/Property/HBO309898



1. MONEY LAUNDERING REGULATIONS Intending purchasers will be asked to produce identification documentation at a later stage and we would ask for your co-operation in order that there will be no delay in agreeing the sale. 2. These particulars do not constitute part or all of an offer or contract. 3. The measurements indicated are supplied for guidance only and as such must be considered incorrect. Potential buyers are advised to recheck measurements before committing to any expense. 4. We have not tested any apparatus, equipment, fixtures, fittings or services and it is in the buyers interest to check the working condition of any appliances.

Connells Residential is registered in England and Wales under company number 1489613, Registered Office is Cumbria House, 16-20 Hockliffe Street, Leighton Buzzard, Bedfordshire, LU7 1GN. VAT Registration Number is 500 2481 05.

See all our properties at www.connells.co.uk | www.rightmove.co.uk | www.zoopla.co.uk

Property Ref: HBO309898 - 0002