



Connells

Millmead Road





Property Description

This two bedroom semi-detached home is located in a popular area of Bartley Green. With the property recently being refurbished throughout it offers a move in ready option.

Briefly comprising of entrance hallway, through lounge, fitted kitchen, side utility, two double bedrooms and a modern bathroom suite.

This property also benefits from having a large front and rear garden offering the potential for extension and development.

Entrance Hall

Under stairs storage cupboard, tiled flooring, ceiling spotlights, frosted double glazed windows, stairs arising.

Lounge

21' 6" x 11' 5" (6.55m x 3.48m)

2 ceiling spotlights, double glazed window to front elevation, french door to rear garden, 2 panelled radiator, carpet.

Kitchen

9' 9" max x 8' 5" max (2.97m max x 2.57m max)

Spotlights, matching wall and base units, fitted oven, 4 ring gas hob, cooker hood, tiled flooring, vertical radiator, double glazed window to rear, access to lean to, plumbing point.

Utility Room

12' 8" x 4' 8" (3.86m x 1.42m)

Matching wall and base units, plumbing point, ceiling light point, double glazed window to side, tiled flooring, access to front and back garden.

Landing

Ceiling light point, double glazed frosted window, storage cupboard, loft access.

Bedroom One

17' 7" x 9' 9" (5.36m x 2.97m)

Ceiling light point, double glazed window, panelled radiator, ample storage space housing boiler.

Bedroom Two

11' 6" x 8' 11" (3.51m x 2.72m)

Ceiling light point, double glazed window, panelled radiator

Bathroom

Spotlights, heated towel rail, 2 frosted double glazed window, sink and vanity unit with mixer tap, low flush w.c, P shaped bath with waterfall shower, partially tiled.

Front Garden

Multi car driveway, rear access, lawned area, access via living room and utility, side access.

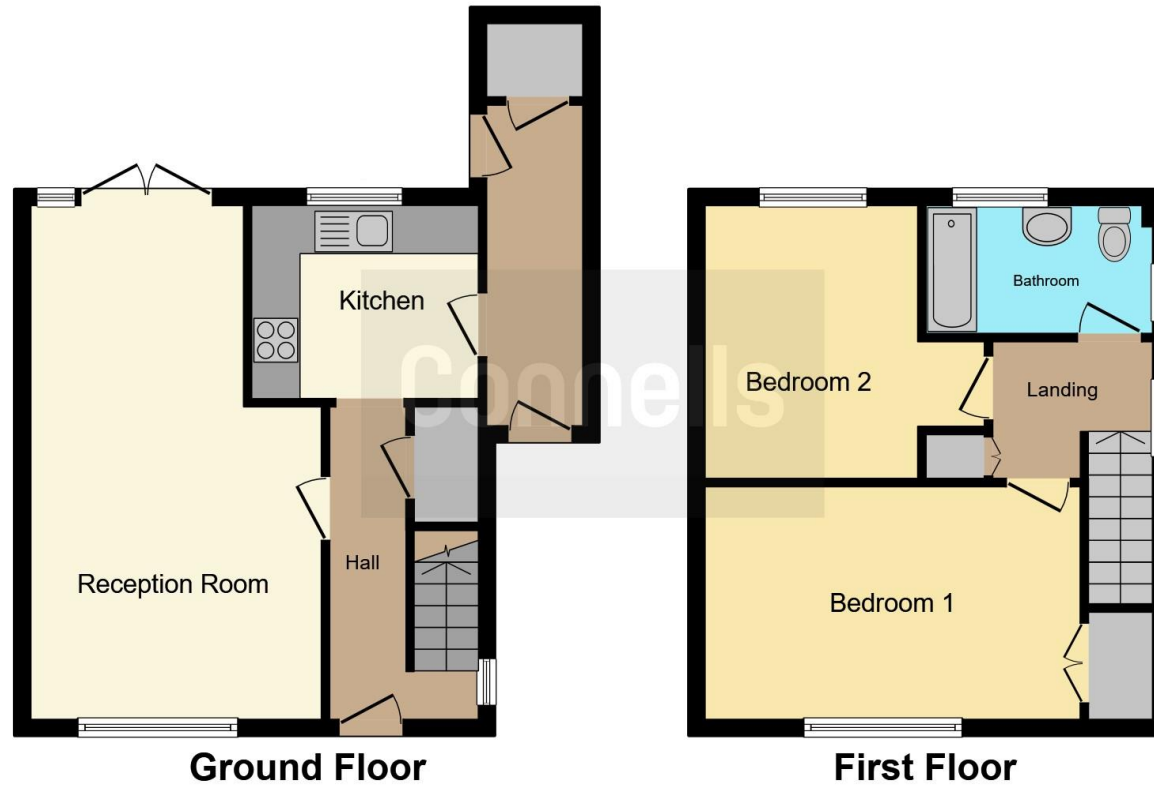
Rear Garden

Slabbed raised patio, steps down to lawned area, access via living room and utility, side access.









This floor plan is for illustrative purposes only. It is not drawn to scale. Any measurements, floor areas (including any total floor area), openings and orientation are approximate. No details are guaranteed, they cannot be relied upon for any purpose and they do not form part of any agreement. No liability is taken for any error, omission or misstatement. A party must rely upon its own inspection(s). Powered by www.focalagent.com

To view this property please contact Connells on

T 0121 426 2800
E harborne@connells.co.uk

158 High Street Harborne
 BIRMINGHAM B17 9QE

EPC Rating: C

view this property online connells.co.uk/Property/HBO309455

Tenure: Freehold



1. MONEY LAUNDERING REGULATIONS Intending purchasers will be asked to produce identification documentation at a later stage and we would ask for your co-operation in order that there will be no delay in agreeing the sale. 2. These particulars do not constitute part or all of an offer or contract. 3. The measurements indicated are supplied for guidance only and as such must be considered incorrect. Potential buyers are advised to recheck measurements before committing to any expense. 4. We have not tested any apparatus, equipment, fixtures, fittings or services and it is in the buyers interest to check the working condition of any appliances.

Connells Residential is registered in England and Wales under company number 1489613, Registered Office is Cumbria House, 16-20 Hockliffe Street, Leighton Buzzard, Bedfordshire, LU7 1GN. VAT Registration Number is 500 2481 05.

See all our properties at www.connells.co.uk | www.rightmove.co.uk | www.zoopla.co.uk

Property Ref: HBO309455 - 0004