

for sale

£190,000 Freehold



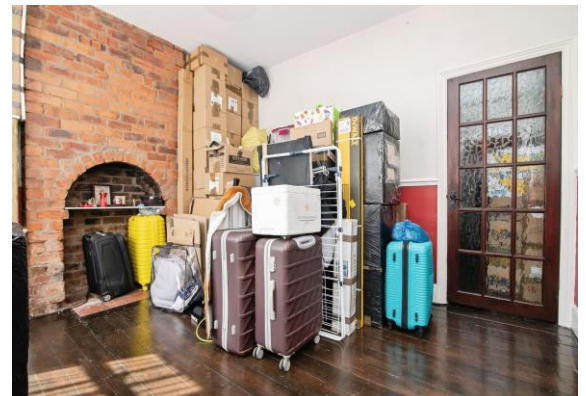
Rosefield Road Smethwick B67 6DU

Discover Prime Properties in Smethwick!

Explore exceptional homes in Smethwick with Connells Bearwood. Perfect for first-time buyers and savvy investors. Don't miss out—these opportunities are going fast!

Contact Us Today on 0121 420 3611

Residential Sales & Lettings | Mortgage Services |
Conveyancing | Surveyors | Land & New Homes



Property Details

Ground Floor

Reception Room One

The room features a bay window to the front aspect, providing ample natural light. It has stained wood flooring and an exposed brick chimney breast that adds rustic charm. A central ceiling light point ensures good lighting, and a radiator provides warmth.

Reception Room Two

The room features a window to the rear aspect, providing natural light. It has wood flooring, a ceiling light point for good lighting, and a radiator for warmth.

Kitchen

The fitted kitchen includes a range of wall and base units, a window to the side aspect, and a central heating boiler. It features a cookerhood extractor fan, tiled floor, part tiled walls, a ceiling light point, and a radiator.

Garden

The private garden at the rear features a lawn, a paved area, and a large out house for storage. Side access is also available straight to the garden.

First Floor

Bedroom One

The room features windows to the front aspect, laminate flooring, a ceiling light point, and a radiator.

Bedroom Two

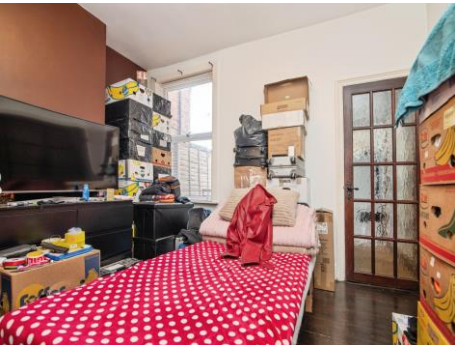
The room features a window to the rear aspect, carpeted flooring, a ceiling light point, and a radiator.

Bathroom

The bathroom features an obscured window to the rear aspect, a bath with an overhead shower, a W.C., a hand wash basin, linoleum flooring, a ceiling light point, and a radiator.

Loft Space

The loft is boarded, providing ample storage options.





To view this property please contact Connells on

T 0121 420 3611
E bearwood@connells.co.uk

122-123 Poplar Road Bearwood
 SMETHWICK B66 4AP

Property Ref: BEA310594 - 0005

Tenure: Freehold EPC Rating: D

Council Tax Band: A

This floor plan is for illustrative purposes only. It is not drawn to scale. Any measurements, floor areas (including any total floor area), openings and orientation are approximate. No details are guaranteed, they cannot be relied upon for any purpose and they do not form part of any agreement. No liability is taken for any error, omission or misstatement. A party must rely upon its own inspection(s). Powered by www.focalagent.com

1. MONEY LAUNDERING REGULATIONS Intending purchasers will be asked to produce identification documentation at a later stage and we would ask for your co-operation in order that there will be no delay in agreeing the sale. 2. These particulars do not constitute part or all of an offer or contract. 3. The measurements indicated are supplied for guidance only and as such must be considered incorrect. Potential buyers are advised to recheck measurements before committing to any expense. 4. We have not tested any apparatus, equipment, fixtures, fittings or services and it is in the buyers interest to check the working condition of any appliances.

Connells Residential is registered in England and Wales under company number 1489613, Registered Office is Cumbria House, 16-20 Hockliffe Street, Leighton Buzzard, Bedfordshire, LU7 1GN. VAT Registration Number is 500 2481 05.

see all our properties at www.connells.co.uk | www.rightmove.co.uk | www.zoopla.co.uk