

for sale

£245,000 Freehold



Cheshire Road Smethwick B67 6DL

Hot Properties In Smethwick!* Explore exceptional homes in the heart of Smethwick, ideal for families and investors. Don't Delay - these opportunities won't last long! *Contact Us Now 0121 420 3611



Residential Sales & Lettings | Mortgage Services |
Conveyancing | Surveyors | Land & New Homes

Property Details

Ground Floor

Entrance Hallway

This area features a ceiling light point, a storage cupboard, and a radiator.

Reception Room

This room features a double-glazed bay window to the front aspect, laminate flooring, a ceiling light, and a radiator.

Lounge

This space features a double-glazed window to the side aspect, laminate flooring, a ceiling light, a radiator, and stairs rising to the first floor.

Kitchen

This fitted kitchen includes a range of wall and base units, a sink with drainer and mixer tap, and two double-glazed windows to the side aspect. It features tiled flooring, part-tiled walls, spotlights, an integrated electric oven and gas hob, a cooker hood extractor fan, and a door leading to the rear garden.

Shower Room

This room includes a shower cubicle, hand wash basin, and W.C. It features an obscured double-glazed window to the side aspect, a ceiling light point, and a radiator.

First Floor

Bedroom One

This room features a double-glazed window to the front aspect, carpeted flooring, a ceiling light, and a radiator.

Bedroom Two

This room features a double-glazed window to the side aspect, carpeted flooring, a ceiling light, storage cupboard, and a radiator.

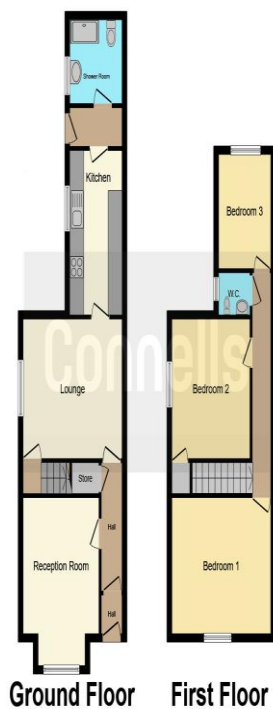
W.C

Features a W.C, hand wash basin, and ceiling light.

Bedroom Three

This room features a double-glazed window to the rear aspect, carpeted flooring, a ceiling light, and a radiator.





This floor plan is for illustrative purposes only. It is not drawn to scale. Any measurements, floor areas (including any total floor area), openings and orientation are approximate. No details are guaranteed, they cannot be relied upon for any purpose and they do not form part of any agreement. No liability is taken for any error, omission or misstatement. A party must rely upon its own inspection(s). Powered by www.focalagent.com

To view this property please contact Connells on

T 0121 420 3611
E bearwood@connells.co.uk

122-123 Poplar Road Bearwood
 SMETHWICK B66 4AP

Tenure: Freehold

EPC Rating: D

Property Ref: BEA312179 - 0004

1. MONEY LAUNDERING REGULATIONS Intending purchasers will be asked to produce identification documentation at a later stage and we would ask for your co-operation in order that there will be no delay in agreeing the sale. 2. These particulars do not constitute part or all of an offer or contract. 3. The measurements indicated are supplied for guidance only and as such must be considered incorrect. Potential buyers are advised to recheck measurements before committing to any expense. 4. We have not tested any apparatus, equipment, fixtures, fittings or services and it is in the buyers interest to check the working condition of any appliances.

Connells Residential is registered in England and Wales under company number 1489613, Registered Office is Cumbria House, 16-20 Hockliffe Street, Leighton Buzzard, Bedfordshire, LU7 1GN. VAT Registration Number is 500 2481 05.

see all our properties at www.connells.co.uk | www.rightmove.co.uk | www.zoopla.co.uk