

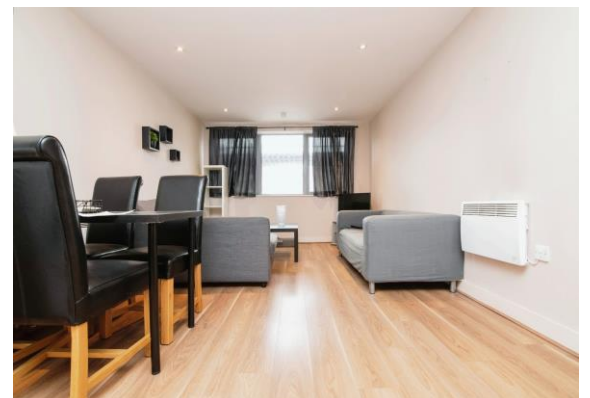
for sale

£220,000 Leasehold



Hall Street Birmingham B18 6BY

Hot Properties In Birmingham! Explore exceptional homes in **JEWELLERY QUARTER** brought to you by Connells Bearwood, ideal for first time buyers and buy to let investors. Be Quick - these opportunities won't last long! ***Contact Us Now 0121 420 3611***



Residential Sales & Lettings | Mortgage Services |
Conveyancing | Surveyors | Land & New Homes

Property Details

Entrance Hall

Having a ceiling light point, electric storage heater, storage cupboard, wood style laminate flooring, and access unto;

Bathroom

Having spotlights, bath with overhead mixer tap shower, W.C, hand wash basin, tiled flooring, part tiled walls, extractor fan, and electric tower rail heater.

Kitchen/Lounge/Dining Room

Having wood style laminate flooring, spotlights, electric storage heaters, fitted kitchen with a range of wall and base units, cookerhood, sink with drainer, integrated fridge/freezer, integrated electric oven and four ring hob, plumbing for washing machine,

Bedroom One

Having wood style laminate flooring, ceiling light point, electric storage heater, built in wardrobes, and access to;

En-Suite

Having a shower cubicle, W.C, hand wash basin, spotlights, electric towel rail heater, tiled floor, and part tiled walls.

Bedroom Two

Having wood style laminate flooring, ceiling light point, and electric storage heater.





This floor plan is for illustrative purposes only. It is not drawn to scale. Any measurements, floor areas (including any total floor area), openings and orientation are approximate. No details are guaranteed, they cannot be relied upon for any purpose and they do not form part of any agreement. No liability is taken for any error, omission or misstatement. A party must rely upon its own inspection(s). Powered by www.focalagent.com

To view this property please contact Connells on

T 0121 420 3611
E bearwood@connells.co.uk

122-123 Poplar Road Bearwood
SMETHWICK B66 4AP

Tenure: Leasehold

EPC Rating: C

Property Ref: BEA311781 - 0002

This is a Leasehold property. We are awaiting further details about the Term of the lease. For further information please contact the branch. Please note additional fees could be incurred for these such as Leasehold Fees.

1. MONEY LAUNDERING REGULATIONS Intending purchasers will be asked to produce identification documentation at a later stage and we would ask for your co-operation in order that there will be no delay in agreeing the sale. 2. These particulars do not constitute part or all of an offer or contract. 3. The measurements indicated are supplied for guidance only and as such must be considered incorrect. Potential buyers are advised to recheck measurements before committing to any expense. 4. We have not tested any apparatus, equipment, fixtures, fittings or services and it is in the buyers interest to check the working condition of any appliances.

Connells Residential is registered in England and Wales under company number 1489613, Registered Office is Cumbria House, 16-20 Hockliffe Street, Leighton Buzzard, Bedfordshire, LU7 1GN. VAT Registration Number is 500 2481 05.

see all our properties at www.connells.co.uk | www.rightmove.co.uk | www.zoopla.co.uk