



Connells

Hallam Street
West Bromwich

Hallam Street West Bromwich B71 4HS

for sale offers in excess of
£210,000



Property Description

This BEAUTIFUL VICTORIAN MID-TERRACED property is set within a key residential location. Hallam Street is within the heart of West Bromwich and benefits from having major bus links on All Saints as well as being walking distance to the local tram town centre tram stop. This gives you the best of both worlds of having easy access to West Bromwich Town Centre as well as major Cities like Birmingham and Wolverhampton.

The property itself is approached via a door into the entrance hallway with the benefit of two large reception room and a fitted kitchen, a cellar for storage and a ground floor bathroom. To the first floor are three bedrooms.

CALL US NOW TO ARRANGE YOUR VIEWINGS!

Entrance Hall

Access into the property via a door to the side, stairs to the first floor and doors to the lounge and dining room.

Lounge

12' 6" x 11' 2" (3.81m x 3.40m)

Double glazed bay window to the front, wooden flooring and a gas fire set in a feature surround.

Dining Room

12' 1" x 11' 4" (3.68m x 3.45m)

Double glazed doors to the rear garden, central heated radiator and vinyl flooring.

Cellar

12' 4" x 12' (3.76m x 3.66m)

Lighting.

Kitchen

16' 1" x 8' 5" (4.90m x 2.57m)

Fitted kitchen comprising of a range of wall and base units with work surfaces over, tiled walls, stainless steel sink and drainer, plumbing point, integrated cooker double glazed window to the side and door to the rear garden.

Bathroom

Double glazed window to the side, fitted bath with shower over, wash hand basin, WC, heated towel rail and extractor fan.

First Floor Landing

Storage cupboard and doors to;

Bedroom One

11' 4" x 11' 2" (3.45m x 3.40m)

Double glazed window to the front and a central heated radiator.

Bedroom Two

12' 3" x 9' 7" (3.73m x 2.92m)

Double glazed to the rear, central heated radiator and wooden flooring.

Bedroom Three

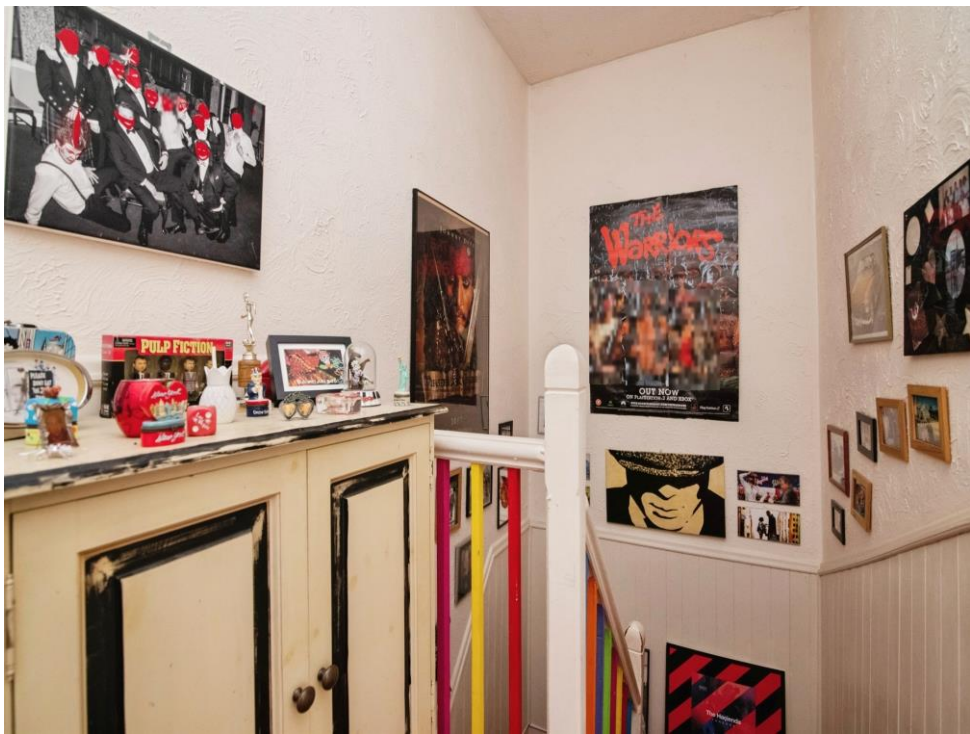
12' 5" x 5' 9" (3.78m x 1.75m)

Double glazed window to the rear and a central heated radiator.

Rear Garden

Slabbed patio area to the front, artificial grass and second decked patio area to the rear.









This floor plan is for illustrative purposes only. It is not drawn to scale. Any measurements, floor areas (including any total floor area), openings and orientation are approximate. No details are guaranteed, they cannot be relied upon for any purpose and they do not form part of any agreement. No liability is taken for any error, omission or misstatement. A party must rely upon its own inspection(s). Powered by www.focalagent.com

To view this property please contact Connells on

T 0121 525 1177
E westbromwich@connells.co.uk

3 Astle Park
 WEST BROMWICH B70 8NS

EPC Rating: C Council Tax
 Band: A

Tenure: Freehold

view this property online connells.co.uk/Property/WBW310976



1. MONEY LAUNDERING REGULATIONS Intending purchasers will be asked to produce identification documentation at a later stage and we would ask for your co-operation in order that there will be no delay in agreeing the sale. 2. These particulars do not constitute part or all of an offer or contract. 3. The measurements indicated are supplied for guidance only and as such must be considered incorrect. Potential buyers are advised to recheck measurements before committing to any expense. 4. We have not tested any apparatus, equipment, fixtures, fittings or services and it is in the buyers interest to check the working condition of any appliances.

Connells Residential is registered in England and Wales under company number 1489613, Registered Office is Cumbria House, 16-20 Hockliffe Street, Leighton Buzzard, Bedfordshire, LU7 1GN. VAT Registration Number is 500 2481 05.

See all our properties at www.connells.co.uk | www.rightmove.co.uk | www.zoopla.co.uk

Property Ref: WBW310976 - 0004