



Connells

Marsh Lane
West Bromwich

Marsh Lane West Bromwich B71 2DA

for sale
£195,000



Property Description

This family homes offers the perfect opportunity to either get you on the property ladder or for the next step up for you family home. Marsh Lane is set within a key location in West Bromwich with period buildings and open green spaces to enjoy. You have sandwell and general hospital on the main all saints way along with several bus stops. This give you access to either West Bromwich town centre or Birmingham City Centre with ease! Within West Bromwich you have the high street with an array of shops and amenities along with New Square Shopping Centre.

CALL NOW TO ARRANGE YOU VIEWINGS!

Entrance Hallway

accessed via the front door which then leads to the lounge and stairs leading to first floor landing.

Lounge

13' 1" x 12' 10" (3.99m x 3.91m)

Having a UPVC double glazed window to front, radiator, fireplace with surround and harth and having laminate flooring.

Kitchen

10' 2" x 8' 2" (3.10m x 2.49m)

Having a fitted kitchen with wall and base units incorporating worksurfaces over, sink drainer, splash back tiling, electric oven and gas hob, space for washing machine under, space for fridge freezer, tile flooring and a door leading to rear lean to allowing access to rear garden.

Bedroom One

13' 1" x 10' 6" (3.99m x 3.20m)

Having a UPVC double glazed window to the front, carpet flooring and radiator

Bedroom Two

11' 2" x 8' 6" (3.40m x 2.59m)

Having a UPVC double glazed window to rear, carpet flooring and radiator

Bedroom Three

8' 6" x 7' 3" (2.59m x 2.21m)

Having a UPVC double glazed window to rear, radiator and laminate flooring.

Bathroom

Offering a wash hand basin, W.C and bath with radiator and tile flooring.

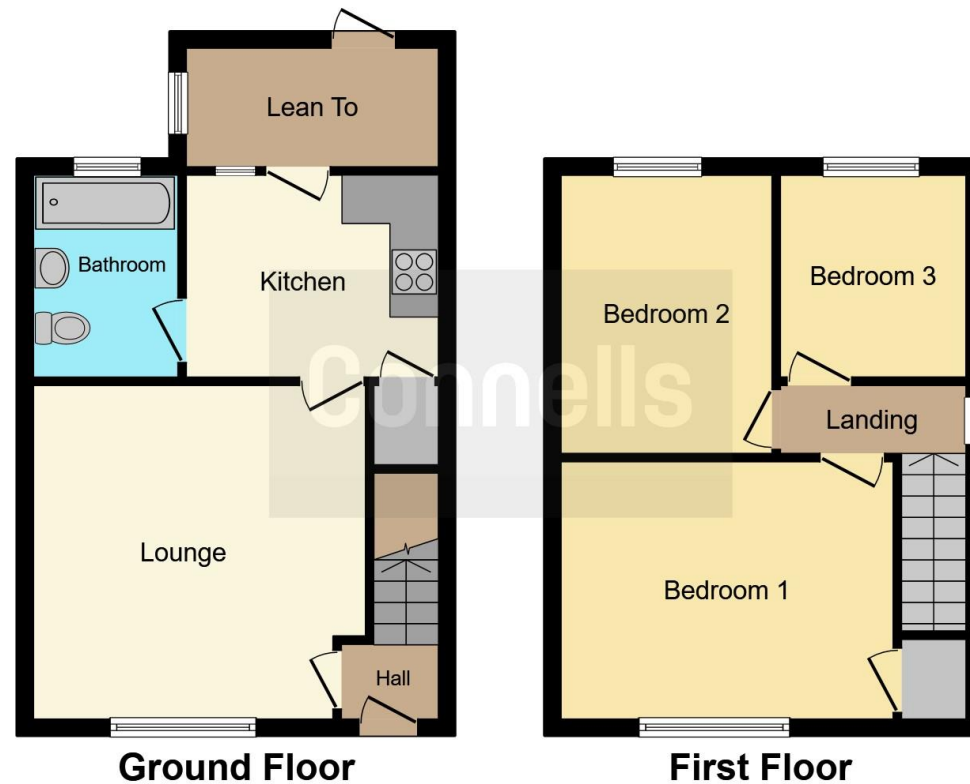
Externally

The frontage offers a lawn area with a low level wall with steps leading to front door. The rear garden offers a garden shed, patio area and a lawn.









This floor plan is for illustrative purposes only. It is not drawn to scale. Any measurements, floor areas (including any total floor area), openings and orientation are approximate. No details are guaranteed, they cannot be relied upon for any purpose and they do not form part of any agreement. No liability is taken for any error, omission or misstatement. A party must rely upon its own inspection(s). Powered by www.focalagent.com

To view this property please contact Connells on

T 0121 525 1177
E westbromwich@connells.co.uk

3 Astle Park
 WEST BROMWICH B70 8NS

EPC Rating: C Council Tax
 Band: A

Tenure: Freehold

view this property online connells.co.uk/Property/WBW310440



1. MONEY LAUNDERING REGULATIONS Intending purchasers will be asked to produce identification documentation at a later stage and we would ask for your co-operation in order that there will be no delay in agreeing the sale. 2. These particulars do not constitute part or all of an offer or contract. 3. The measurements indicated are supplied for guidance only and as such must be considered incorrect. Potential buyers are advised to recheck measurements before committing to any expense. 4. We have not tested any apparatus, equipment, fixtures, fittings or services and it is in the buyers interest to check the working condition of any appliances.

Connells Residential is registered in England and Wales under company number 1489613, Registered Office is Cumbria House, 16-20 Hockliffe Street, Leighton Buzzard, Bedfordshire, LU7 1GN. VAT Registration Number is 500 2481 05.

See all our properties at www.connells.co.uk | www.rightmove.co.uk | www.zoopla.co.uk

Property Ref: WBW310440 - 0004