



Connells

Harrington Croft
WEST BROMWICH

Harrington Croft WEST BROMWICH B71 3RJ

for sale offers in the region of
£130,000



Property Description

This apartment is tucked away in a peaceful setting on a residential estate that is located just off the Pennyhill Lane area. The apartment is conveniently located for access to Sandwell and General, as well as major commute links such as J1 of the M5 as well as the Newton Road giving you access to Great barr, as well as Birmingham City Centre.

The kitchen comes with most of the white good built in and there are approximately 105 years remaining on the lease. The block is managed by SDL Management and service charge is payable. The upperfloor apartment briefly comprises of an entrance hall with intercom system, lounge/diner with a Juliet balcony, traditional style fitted kitchen with integral appliances, two double bedrooms with fitted wardrobes and another Juliet balcony to the master, family bathroom, central heating and one allocated parking space.

Approach

The property is approached via drop curb allowing access for off road parking with it own space included. Entrance door to the main communal area.

Communal Areas

With stairs rising to the upper floor and a secure fob access doorway.

Hallway

With front entrance door, storage and doors leading to the bedrooms, lounge and family bathroom.

Lounge

13' 9" x 15' 5" (4.19m x 4.70m)

The lounge offers a light and spacious living area with french doors to the front, tel and tv points, gas central heated radiator and entrance to the kitchen.

Kitchen

5' 7" x 11' 10" (1.70m x 3.61m)

The kitchen comprises of a arrange of wall and base units with inset SS sink drainer with work surfaces over, integrated electric double over, gas hob with cooker hood over and plumbing points.

Bedroom One

9' 10" x 16' 1" (3.00m x 4.90m)

With french doors opening to a Juliet balcony, fitted wardrobes, gas central heated radiator and carpet flooring.

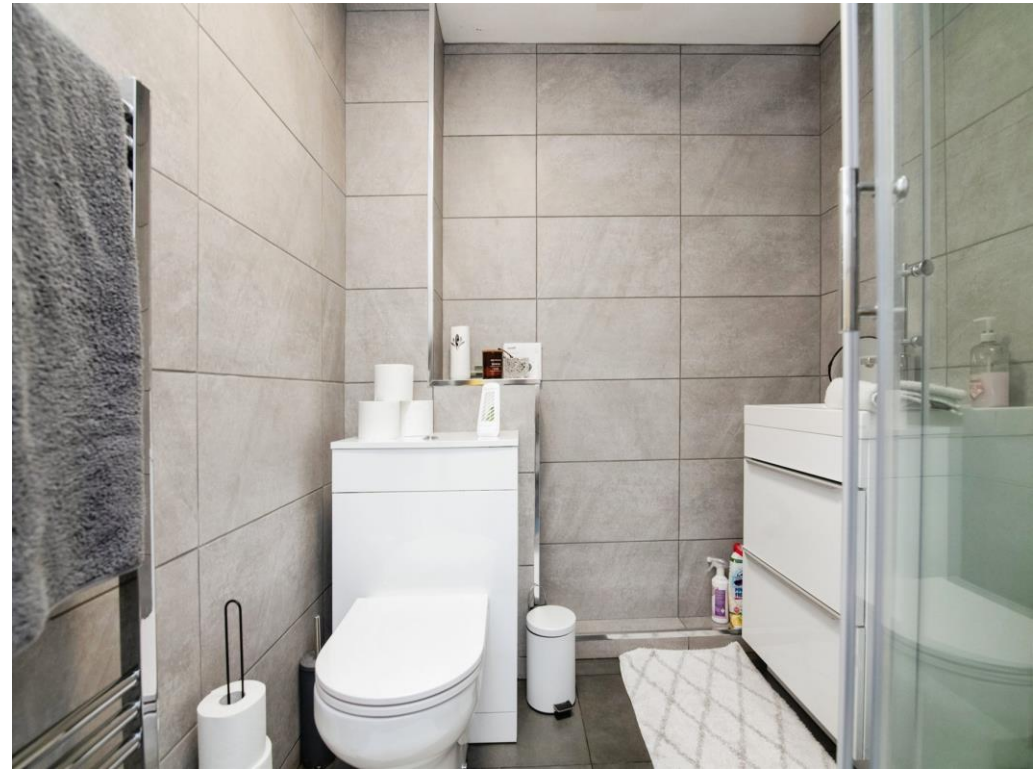
Bedroom Two

9' 10" x 10' 6" (3.00m x 3.20m)

Double glazed window to the front, gas central heated radiator and carpet flooring.

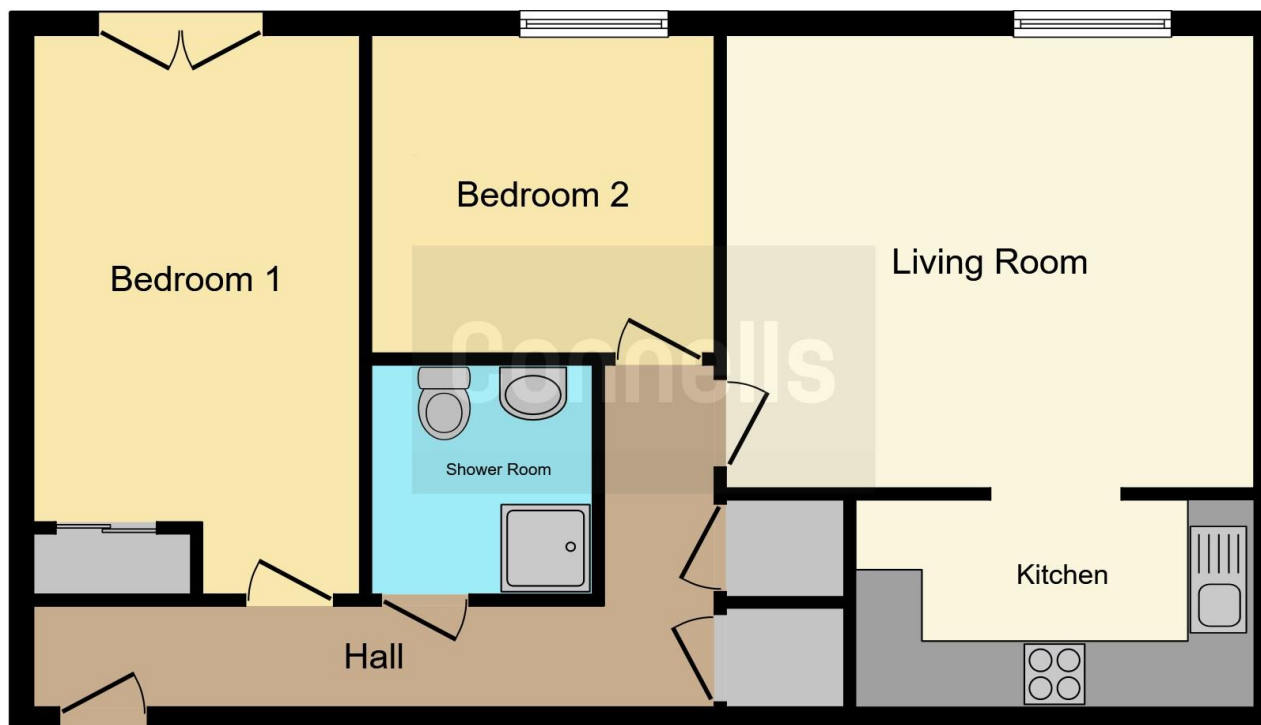
Bathroom

A modern fitted suite to comprise of bath with mixer taps and shower fitting over, low level w.c, wash hand basin, gas central heated radiator and with a tiled finish.









This floor plan is for illustrative purposes only. It is not drawn to scale. Any measurements, floor areas (including any total floor area), openings and orientation are approximate. No details are guaranteed, they cannot be relied upon for any purpose and they do not form part of any agreement. No liability is taken for any error, omission or misstatement. A party must rely upon its own inspection(s). Powered by www.focalagent.com

To view this property please contact Connells on

T 0121 525 1177
E westbromwich@connells.co.uk

3 Astle Park
 WEST BROMWICH B70 8NS

EPC Rating: B

Tenure: Leasehold

view this property online connells.co.uk/Property/WBW309524

This is a Leasehold property with details as follows; Term of Lease 125 years from 01 Jul 2003. Should you require further information please contact the branch. Please Note additional fees could be incurred for items such as

1. MONEY LAUNDERING REGULATIONS Intending purchasers will be asked to produce identification documentation at a later stage and we would ask for your co-operation in order that there will be no delay in agreeing the sale. 2. These particulars do not constitute part or all of an offer or contract. 3. The measurements indicated are supplied for guidance only and as such must be considered incorrect. Potential buyers are advised to recheck measurements before committing to any expense. 4. We have not tested any apparatus, equipment, fixtures, fittings or services and it is in the buyers interest to check the working condition of any appliances.

Connells Residential is registered in England and Wales under company number 1489613, Registered Office is Cumbria House, 16-20 Hockliffe Street, Leighton Buzzard, Bedfordshire, LU7 1GN. VAT Registration Number is 500 2481 05.



See all our properties at www.connells.co.uk | www.rightmove.co.uk | www.zoopla.co.uk

Property Ref: WBW309524 - 0006