

for sale

offers in excess of **£90,000** Leasehold



Hobart Point Churchfields Way West Bromwich B71 4FF

This ground floor one bedroom apartment located on the sought after Churchfields estate within close proximity to West Bromwich town centre! With GATED PRIVATE PARKING and being walking distance to local shops! CALL TO VIEW!



Residential Sales & Lettings | Mortgage Services |
Conveyancing | Surveyors | Land & New Homes

Property Details

Entrance Hall

Door into the property, storage cupboard and radiator.

Lounge/Kitchen 10' 7" x 21' 1" (3.23m x 6.43m)

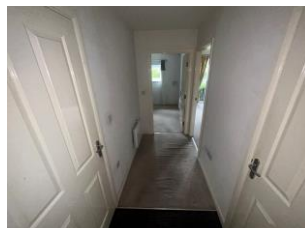
Open plan lounge/kitchen with double glazed patio door to the front, radiator, TV and telephone points. Kitchen compromises of a range of wall and base units with work surfaces over, sink and drainer, plumbing points, gas hob, electric oven and cooker hood.

Bedroom 10' 2" x 11' 10" (3.10m x 3.61m)

Double glazed window to the front, fitted wardrobe, radiator and TV point.

Bathroom

Bath with shower over, wash hand basin, WC and radiator.



To view this property please contact Connells on

T 0121 525 1177
E westbromwich@connells.co.uk

3 Astle Park
WEST BROMWICH B70 8NS

Tenure: Leasehold

EPC Rating: C

Property Ref: WBW309918 - 0005

This is a Leasehold property with details as follows; Term of Lease 155 years from 01 Jan 2011. Should you require further information please contact the branch. Please Note additional

1. MONEY LAUNDERING REGULATIONS Intending purchasers will be asked to produce identification documentation at a later stage and we would ask for your co-operation in order that there will be no delay in agreeing the sale. 2. These particulars do not constitute part or all of an offer or contract. 3. The measurements indicated are supplied for guidance only and as such must be considered incorrect. Potential buyers are advised to recheck measurements before committing to any expense. 4. We have not tested any apparatus, equipment, fixtures, fittings or services and it is in the buyers interest to check the working condition of any appliances.

Connells Residential is registered in England and Wales under company number 1489613, Registered Office is Cumbria House, 16-20 Hockliffe Street, Leighton Buzzard, Bedfordshire, LU7 1GN. VAT Registration Number is 500 2481 05.

see all our properties at www.connells.co.uk| www.rightmove.co.uk | www.zoopla.co.uk