



Connells

Wiltshire Way
West Bromwich



Property Description

Situated within the Hateley Heath area of West Bromwich and within walking distance of Phoenix Academy and local shops. This currently rented 2 bedroom upper floor apartment briefly comprises; communal entrance with stairs leading upto the apartment, spacious lounge with kitchen off, 2 good sized bedrooms with master room having Juliet style balcony and overlooking communal gardens, bathroom, central heating and double glazing (where specified). There is also access to communal gardens and an allocated parking space.

Approach

The property is approached via communal entrance with stairs rising to the first floor.

Entrance Hall

With door to the communal areas, leading to the bedrooms, bathroom and lounge.

Lounge

16' 5" x 9' 10" (5.00m x 3.00m)
With a double glazed window to the front, radiator, tel and tv points and with the entrance to the kitchen.

Kitchen

A fitted kitchen to comprise a range of wall and base units with inset ss sink drainer with work surfaces over, integrated cooker with hob and hood over, plumbing with washing machine and a double glazed window to the front.

Bedroom One

14' 1" x 6' 11" Max (4.29m x 2.11m Max)
With a double glazed window to the front and a radiator.

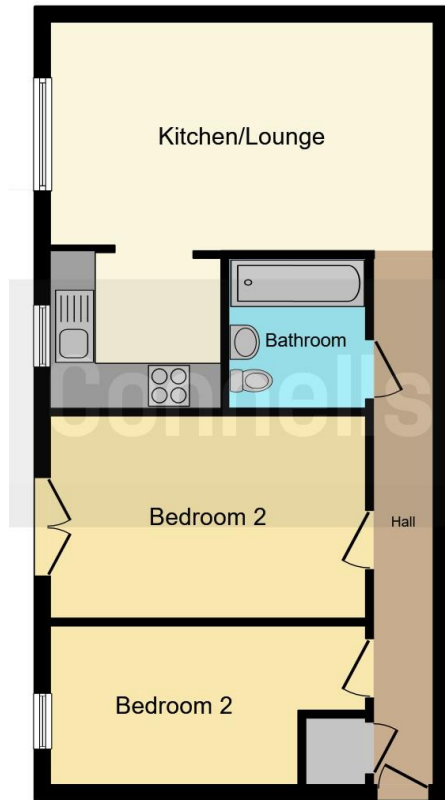
Bedroom Two

14' 1" x 8' 10" (4.29m x 2.69m)
With french doors to the front and a radiator.

Bathroom

A bathroom suite to comprise of bath with shower, wash hand basin, low level W.C and a radiator.





This floorplan is for illustrative purposes only and is not drawn to scale. Measurements, floor-areas, openings and orientations are approximate. They should not be relied upon for any purpose and do not form any part of an agreement. No liability is taken for any error or mis-statement. All parties must rely on their own inspections.

To view this property please contact Connells on

T 0121 525 1177
E westbromwich@connells.co.uk

3 Astle Park
 WEST BROMWICH B70 8NS

EPC Rating: C

view this property online connells.co.uk/Property/WBW308945

This is a Leasehold property with details as follows; Term of Lease 125 years from 01 Apr 2005. Should you require further information please contact the branch. Please Note additional fees could be incurred for items such as Leasehold packs.



Tenure: Leasehold



1. MONEY LAUNDERING REGULATIONS Intending purchasers will be asked to produce identification documentation at a later stage and we would ask for your co-operation in order that there will be no delay in agreeing the sale. 2. These particulars do not constitute part or all of an offer or contract. 3. The measurements indicated are supplied for guidance only and as such must be considered incorrect. Potential buyers are advised to recheck measurements before committing to any expense. 4. We have not tested any apparatus, equipment, fixtures, fittings or services and it is in the buyers interest to check the working condition of any appliances.

Connells Residential is registered in England and Wales under company number 1489613, Registered Office is Cumbria House, 16-20 Hockliffe Street, Leighton Buzzard, Bedfordshire, LU7 1GN. VAT Registration Number is 500 2481 05.

See all our properties at www.connells.co.uk | www.rightmove.co.uk | www.zoopla.co.uk

Property Ref: WBW308945 - 0004