



Connells

37f Phoenix Street
West Bromwich



Property Description

This nearly new detached family home has recently been built and benefits from being within its 10 year warranty. The property itself is nestled inbetween the M5 and M6 giving great commute links for wherever you are based for work. You have West Bromwich New Square within a 5 minute drive with an array of shops and amenities, as well as Birmingham City Centre around a 20 minute drive away. You have both secondary and primary schools within walking distance too!

The property is finished to a high standard throughout with a high spec finished kitchen diner, separate utility with downstairs toilet, large living space, four generously sized bedrooms with a family bathroom and en suite to master!

CALL US NOW TO ARRANGE YOUR VIEWINGS!

This nearly new detached family home has recently been built and benefits from being within its 10 year warranty. The property itself is nestled inbetween the M5 and M6 giving great commute links for wherever you are based for work. You have West Bromwich New Square within a 5 minute drive with an array of shops and amenities, as well as Birmingham City Centre around a 20 minute drive away. You have both secondary and primary schools within walking distance too!

The property is finished to a high standard throughout with a high spec finished kitchen diner, separate utility with downstairs toilet, large living space, four generously sized bedrooms with a family bathroom and en suite to master!

CALL US NOW TO ARRANGE YOUR VIEWINGS!

This nearly new detached family home has

recently been built and benefits from being within its 10 year warranty. The property itself is nestled inbetween the M5 and M6 giving great commute links for wherever you are based for work. You have West Bromwich New Square within a 5 minute drive with an array of shops and amenities, as well as Birmingham City Centre around a 20 minute drive away. You have both secondary and primary schools within walking distance too!

The property is finished to a high standard throughout with a high spec finished kitchen diner, separate utility with downstairs toilet, large living space, four generously sized bedrooms with a family bathroom and en suite to master!

CALL US NOW TO ARRANGE YOUR VIEWINGS!

This nearly new detached family home has recently been built and benefits from being within its 10 year warranty. The property itself is nestled inbetween the M5 and M6 giving great commute links for wherever you are based for work. You have West Bromwich New Square within a 5 minute drive with an array of shops and amenities, as well as Birmingham City Centre around a 20 minute drive away. You have both secondary and primary schools within walking distance too!

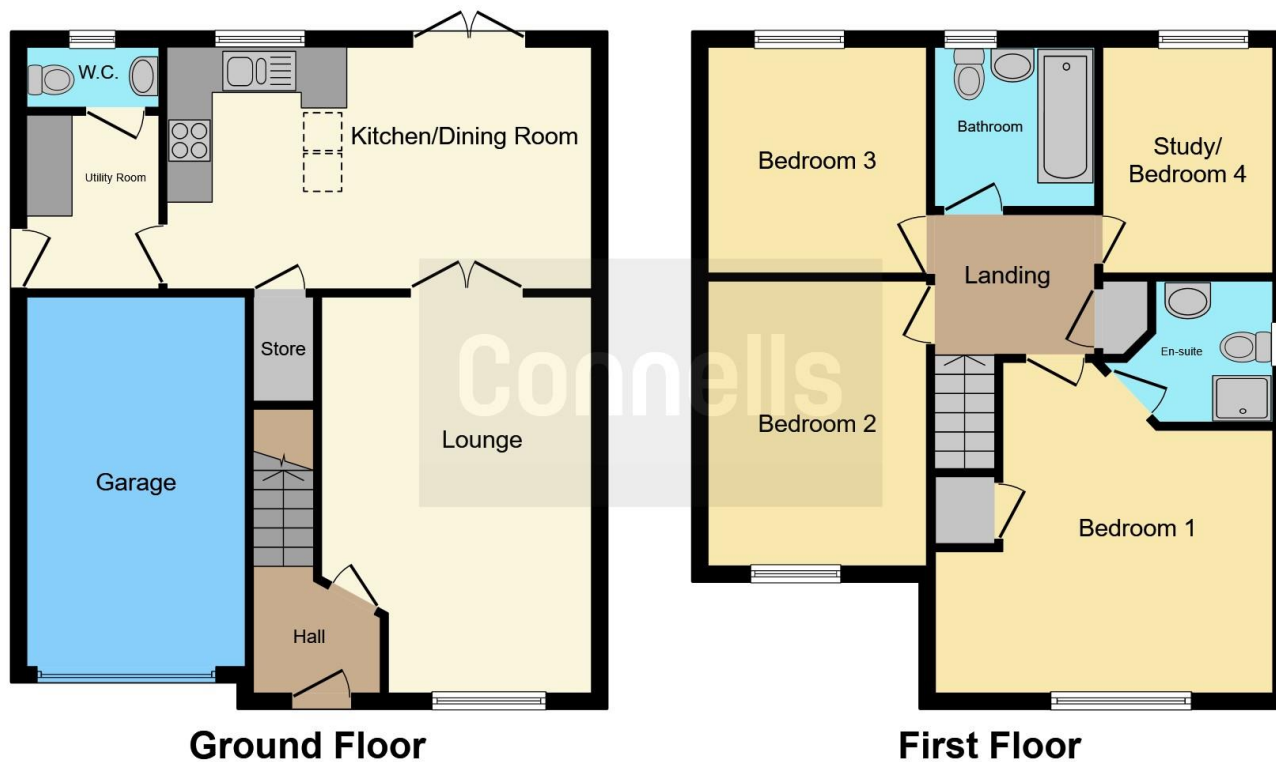
The property is finished to a high standard throughout with a high spec finished kitchen diner, separate utility with downstairs toilet, large living space, four generously sized bedrooms with a family bathroom and en suite to master!

CALL US NOW TO ARRANGE YOUR VIEWINGS!









This floorplan is for illustrative purposes only and is not drawn to scale. Measurements, floor-areas, openings and orientations are approximate. They should not be relied upon for any purpose and do not form any part of an agreement. No liability is taken for any error or mis-statement. All parties must rely on their own inspections.

To view this property please contact Connells on

T 0121 525 1177
E westbromwich@connells.co.uk

3 Astle Park
 WEST BROMWICH B70 8NS

EPC Rating: B

view this property online connells.co.uk/Property/WBW309473

Tenure: Freehold



1. MONEY LAUNDERING REGULATIONS Intending purchasers will be asked to produce identification documentation at a later stage and we would ask for your co-operation in order that there will be no delay in agreeing the sale. 2. These particulars do not constitute part or all of an offer or contract. 3. The measurements indicated are supplied for guidance only and as such must be considered incorrect. Potential buyers are advised to recheck measurements before committing to any expense. 4. We have not tested any apparatus, equipment, fixtures, fittings or services and it is in the buyers interest to check the working condition of any appliances.

Connells Residential is registered in England and Wales under company number 1489613, Registered Office is Cumbria House, 16-20 Hockliffe Street, Leighton Buzzard, Bedfordshire, LU7 1GN. VAT Registration Number is 500 2481 05.

See all our properties at www.connells.co.uk | www.rightmove.co.uk | www.zoopla.co.uk

Property Ref: WBW309473 - 0002