



Connells

Wilson Drive  
Tividale OLDBURY



# Wilson Drive Tividale OLDBURY B69 3NF

for sale offers over  
**£230,000**



## Property Description

A fantastic opportunity to acquire this spacious family home located close to various amenities including Sandwell & Dudley train station, M5 motorway, fantastic schools, various supermarkets & convenience stores. Viewing is recommended to appreciate the high standard throughout.

Inside comprises of entrance hall, utility room, lounge, kitchen & four spacious bedrooms with ensuite to master.

CALL CONNELLS NOW TO VIEW 0121 552 2671

## Ground Floor

### Entrance Hall

Having composite door to front, stairs to upper floor with under stairs storage and doors to various rooms.

### Ground Floor Bathroom

situated on the ground floor, bathroom comprises of: wash hand basin, low level WC, bath with shower over and window to side.

### Bedroom Four

19' 2" x 7' 3" ( 5.84m x 2.21m )

Having rear facing window and wall mounted radiator.

## Utility Room

6' 3" x 5' 5" ( 1.91m x 1.65m )

Sink/drainer integrated in roll top work surface and plumbing for washing machine.

## First Floor

### Lounge

14' 8" max x 13' 7" max ( 4.47m max x 4.14m max )

Having rear double glazed window and wall mounted radiator.

### Kitchen/Diner

11' 9" x 7' 10" ( 3.58m x 2.39m )

Having and array of wall and base units, gas hob & electric oven with cookerhood over, plumbing for washing machine and plumbing for dishwasher.

### Landing

Having front facing double glazed window and wall mounted radiator.

## Second Floor

### Bedroom One

12' 6" x 8' 9" ( 3.81m x 2.67m )

Having rear facing window, fitted wardrobes and wall mounted radiator.

### En-Suite

Having wash hand basin, low level WC, shower cubicle with shower & window.

### Bedroom Two

11' x 10' 11" max ( 3.35m x 3.33m max )

Having front facing double glazed window and wall mounted radiator.

### Bedroom Three

6' 11" x 5' 6" ( 2.11m x 1.68m )

Having side facing window and wall mounted radiator.

### Rear Garden

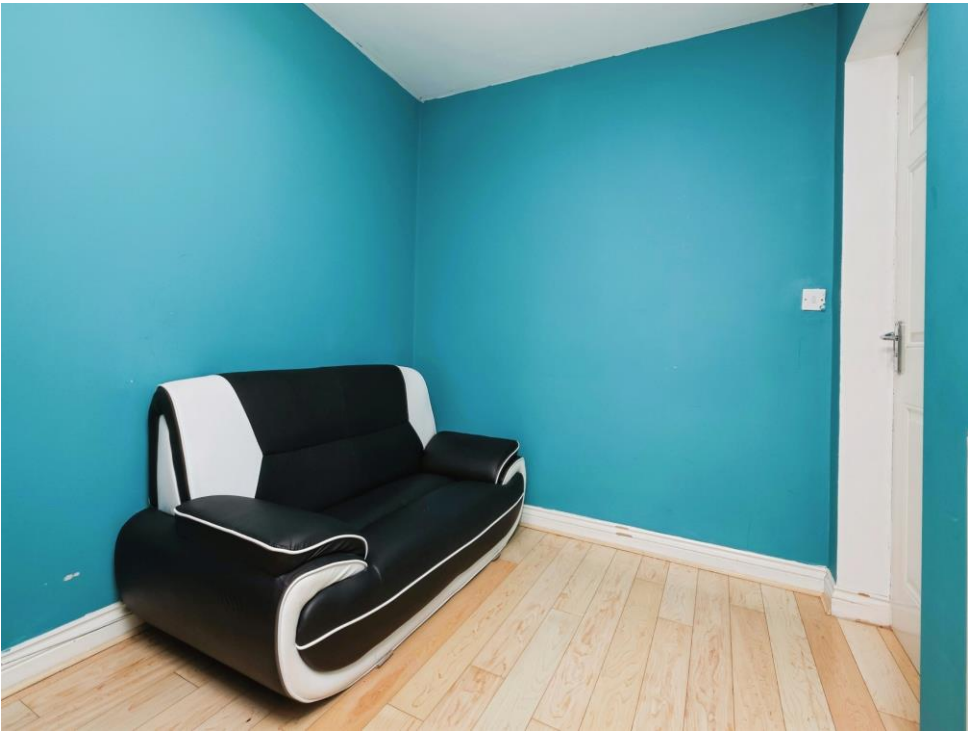
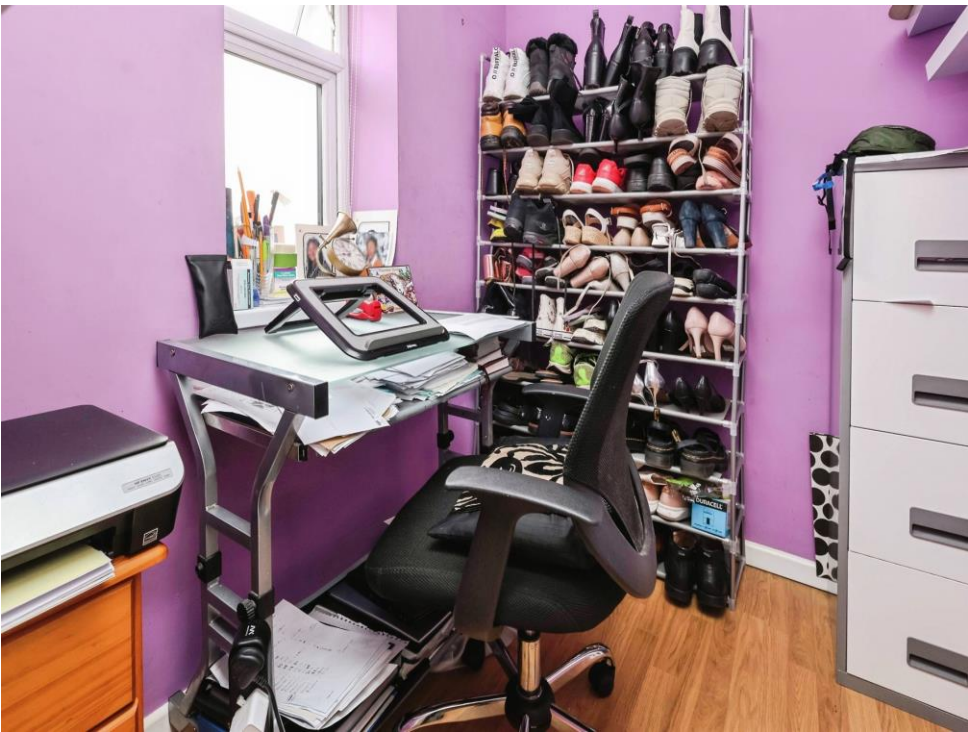
Small patio area with a further lawn area and fence surrounds.

### Front Of The Property

Having driveway to the front.

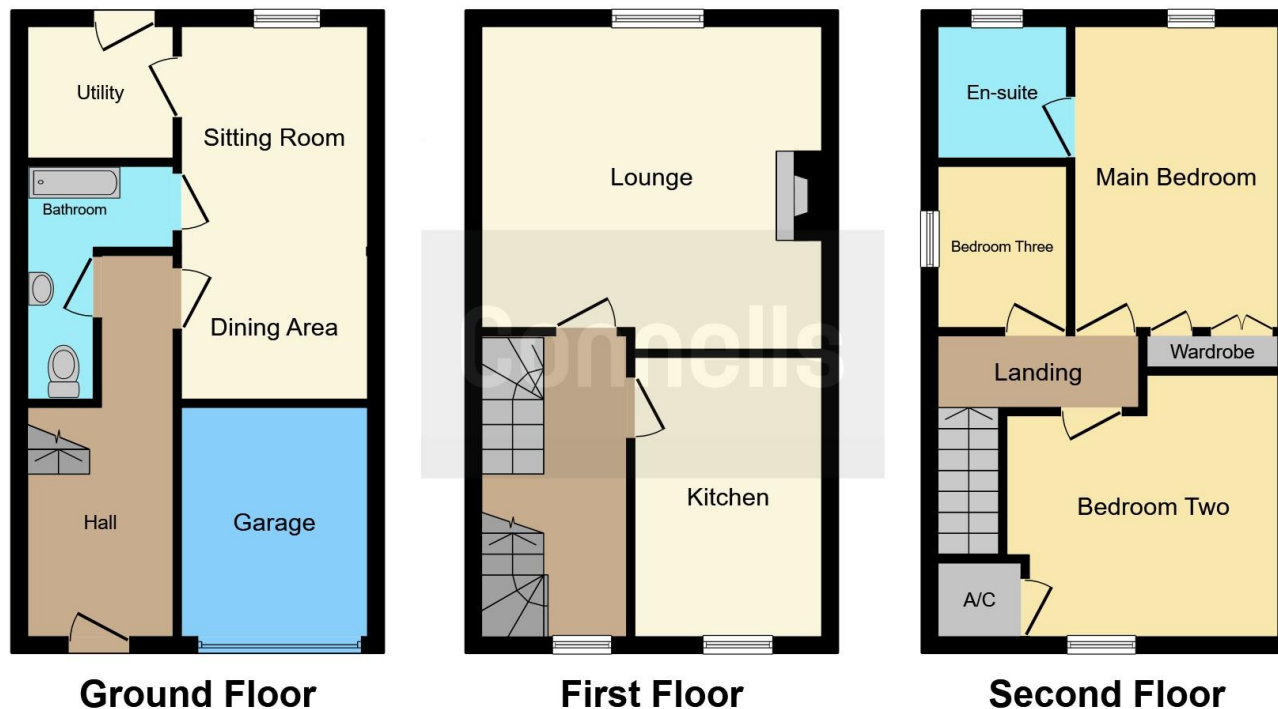












This floor plan is for illustrative purposes only. It is not drawn to scale. Any measurements, floor areas (including any total floor area), openings and orientation are approximate. No details are guaranteed, they cannot be relied upon for any purpose and they do not form part of any agreement. No liability is taken for any error, omission or misstatement. A party must rely upon its own inspection(s). Powered by [www.focalagent.com](http://www.focalagent.com)

To view this property please contact Connells on

**T 0121 552 2671**  
**E [oldbury@connells.co.uk](mailto:oldbury@connells.co.uk)**

70-76 Birmingham Street  
 OLDBURY B69 4EB

EPC Rating: C    Council Tax  
 Band: C

Tenure: Freehold

**view this property online** [connells.co.uk/Property/OLD312389](http://connells.co.uk/Property/OLD312389)



1. MONEY LAUNDERING REGULATIONS Intending purchasers will be asked to produce identification documentation at a later stage and we would ask for your co-operation in order that there will be no delay in agreeing the sale. 2. These particulars do not constitute part or all of an offer or contract. 3. The measurements indicated are supplied for guidance only and as such must be considered incorrect. Potential buyers are advised to recheck measurements before committing to any expense. 4. We have not tested any apparatus, equipment, fixtures, fittings or services and it is in the buyers interest to check the working condition of any appliances.

Connells Residential is registered in England and Wales under company number 1489613, Registered Office is Cumbria House, 16-20 Hockliffe Street, Leighton Buzzard, Bedfordshire, LU7 1GN. VAT Registration Number is 500 2481 05.

**See all our properties at [www.connells.co.uk](http://www.connells.co.uk) | [www.rightmove.co.uk](http://www.rightmove.co.uk) | [www.zoopla.co.uk](http://www.zoopla.co.uk)**

Property Ref: OLD312389 - 0009