



Connells

Brickhouse Road
Rowley Regis



Property Description

This two bedroom semi-detached property is amazing for first time buyers looking to get onto the property ladder. It is also ideal for Investors looking to extend their portfolio.

This property is close to local amenities and is a good location for schools and colleges.

Internally the property comprises of a through living/dining room, a kitchen and utility/storage space to the ground floor.

On the first floor is a bathroom with two good size bedrooms.

Externally the property comprises of a driveway for multiple cars, garage to the side with a front and rear garden.

Call the sales team TODAY to arrange a viewing! 0121-552-2671

Entrance Hall

Double glazed window to side and wall mounted radiator.

Lounge

Double glazed bow window to front, double glazed patio door to rear and wall mounted radiator.

Kitchen

Wall and base units, sink/drain, gas cooker

point, pantry and wall mounted radiator.

Lean To:

Sink/drain, double glazed window to side/rear and door to rear.

Landing

Having loft access, double glazed window to side and doors leading to:

Bedroom One

Two double glazed windows to front, storage cupboard housing the boiler, built in wardrobes and wall mounted radiator.

Bedroom Two

Having double glazed window to rear, built in wardrobes and wall mounted radiator.

Bathroom

Fully fitted bathroom comprising of, bath, shower, wash hand basin, low level WC, double glazed window to rear and wall mounted radiator.

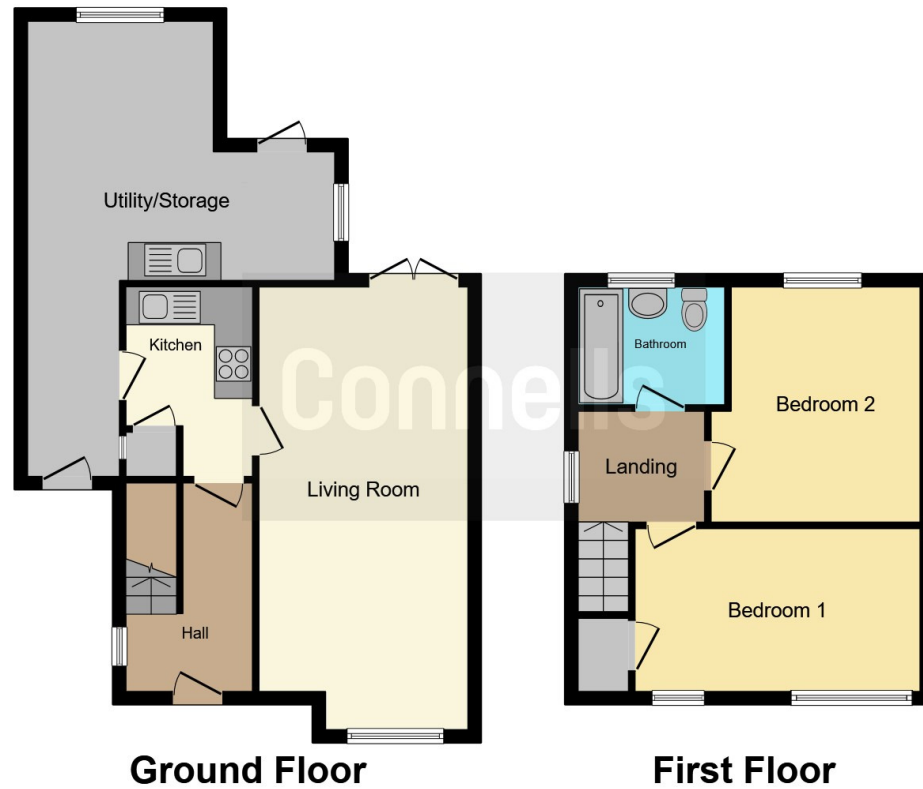
Garage

Having electric inside the garage and used currently for storage.









This floor plan is for illustrative purposes only. It is not drawn to scale. Any measurements, floor areas (including any total floor area), openings and orientation are approximate. No details are guaranteed, they cannot be relied upon for any purpose and they do not form part of any agreement. No liability is taken for any error, omission or misstatement. A party must rely upon its own inspection(s). Powered by www.focalagent.com

To view this property please contact Connells on

T 0121 552 2671
E oldbury@connells.co.uk

70-76 Birmingham Street
 OLDBURY B69 4EB

EPC Rating: Awaited

Tenure: Freehold

view this property online connells.co.uk/Property/OLD311675



1. MONEY LAUNDERING REGULATIONS Intending purchasers will be asked to produce identification documentation at a later stage and we would ask for your co-operation in order that there will be no delay in agreeing the sale. 2. These particulars do not constitute part or all of an offer or contract. 3. The measurements indicated are supplied for guidance only and as such must be considered incorrect. Potential buyers are advised to recheck measurements before committing to any expense. 4. We have not tested any apparatus, equipment, fixtures, fittings or services and it is in the buyers interest to check the working condition of any appliances.

Connells Residential is registered in England and Wales under company number 1489613, Registered Office is Cumbria House, 16-20 Hockliffe Street, Leighton Buzzard, Bedfordshire, LU7 1GN. VAT Registration Number is 500 2481 05.

See all our properties at www.connells.co.uk | www.rightmove.co.uk | www.zoopla.co.uk

Property Ref: OLD311675 - 0003