



Connells

Rood End Road
OLDBURY



Property Description

A spacious traditional terraced property benefiting from NO UPWARD CHAIN. Located in a popular part of Oldbury this property must to be viewed to appreciate the huge amount of potential. Inside comprises of entrance hall, two reception rooms, bathroom, three bedrooms & upstairs WC.

Entrane Hall

Having door to front, stairs to first floor and wall mounted radiator.

Downstairs Bathroom

Having bath with shower over, wash hand basin, low level WC and heated towel rail.

Lounge

11' 11" max x 11' (3.63m max x 3.35m)

Having double glazed window to front and wall mounted radiator.

Dining Room

15' 9" max x 12' 6" max (4.80m max x 3.81m max)

Having double glazed window to rear and wall mounted radiator.

Kitchen

19' 6" max x 6' 9" max (5.94m max x 2.06m max)

Having wall and base units, double glazed window to side, sink/drainer integrated into

work surface, gas hob & electric oven, GCH boiler, integrated dishwasher, plumbing for washing machine, door leading to rear garden & entry.

Landing

Having wall mounted radiator and doors leading to various rooms.

W.C

Having wash hand basin, low level WC, wall mounted radiator and Ex. fan.

Bedroom One

11' 11" max x 11' 2" (3.63m max x 3.40m)

Having double glazed window to front and wall mounted radiator.

Bedroom Two

15' 10" max x 9' 7" max (4.83m max x 2.92m max)

Having double glazed window to rear and wall mounted radiator.

Bedroom Three

14' 2" x 6' 8" (4.32m x 2.03m)

Having double glazed window to front and wall mounted radiator.

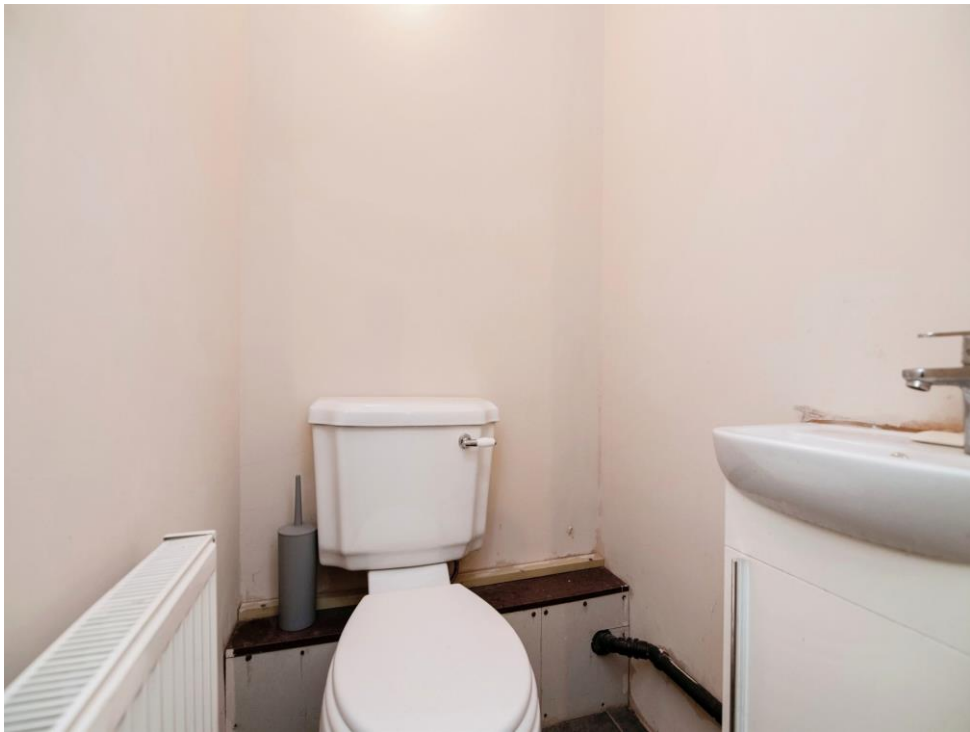
Rear Courtyard

rear courtyard garden with a small grass area and brick wall boundaries.

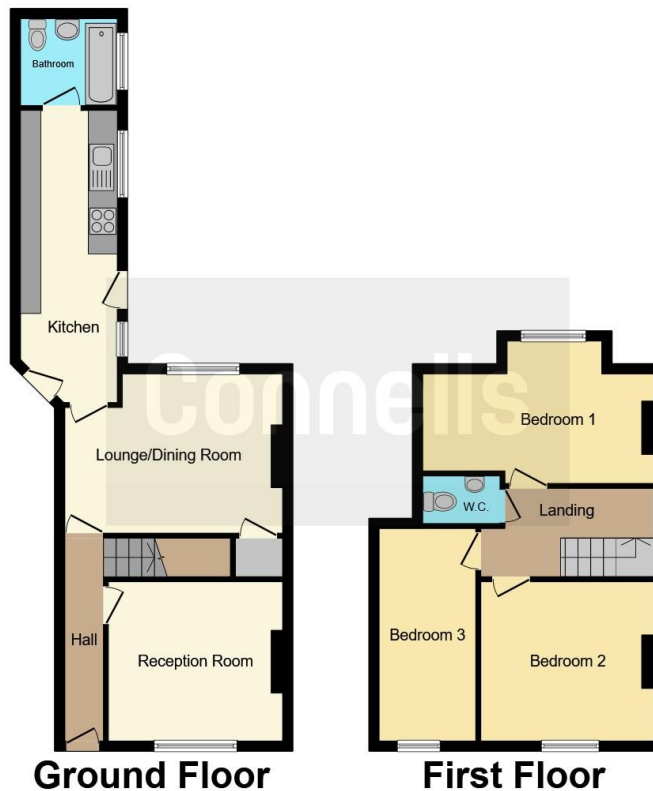
Cellar

Offering large storage area with potential to convert into extra reception room.









This floor plan is for illustrative purposes only. It is not drawn to scale. Any measurements, floor areas (including any total floor area), openings and orientation are approximate. No details are guaranteed, they cannot be relied upon for any purpose and they do not form part of any agreement. No liability is taken for any error, omission or misstatement. A party must rely upon its own inspection(s). Powered by www.focalagent.com

To view this property please contact Connells on

T 0121 552 2671
E oldbury@connells.co.uk

70-76 Birmingham Street
 OLDBURY B69 4EB

EPC Rating: E

Tenure: Freehold

view this property online connells.co.uk/Property/OLD311413



1. MONEY LAUNDERING REGULATIONS Intending purchasers will be asked to produce identification documentation at a later stage and we would ask for your co-operation in order that there will be no delay in agreeing the sale. 2. These particulars do not constitute part or all of an offer or contract. 3. The measurements indicated are supplied for guidance only and as such must be considered incorrect. Potential buyers are advised to recheck measurements before committing to any expense. 4. We have not tested any apparatus, equipment, fixtures, fittings or services and it is in the buyers interest to check the working condition of any appliances.

Connells Residential is registered in England and Wales under company number 1489613, Registered Office is Cumbria House, 16-20 Hockliffe Street, Leighton Buzzard, Bedfordshire, LU7 1GN. VAT Registration Number is 500 2481 05.

See all our properties at www.connells.co.uk | www.rightmove.co.uk | www.zoopla.co.uk

Property Ref: OLD311413 - 0006