



Connells

Stonehouse Crescent
WEDNESBURY

Stonehouse Crescent WEDNESBURY WS10 0DQ

for sale offers over
£200,000



Property Description

Connells Estate Agents are pleased to market for sale this two bedroom semi detached property in Wednesbury, sitting on a large corner plot with great potential to extend (STPP).

To the ground floor the property briefly comprises of an entrance hallway giving access to the through lounge having space for dining and sliding doors leading out to the rear garden. Also to the ground floor is the modern fitted kitchen with plumbing for utilities and space for appliances, a door from the kitchen gives access to the rear garden.

To the first floor are two good sized bedrooms and stunning modern fitted bathroom.

Externally the property sits on an impressive plot, providing ample parking and large rear garden, double gates from the rear garden provide access to the front of the property.

Entrance Hallway

Entrance door, double glazed window to front, stairs to first floor landing and door to kitchen.

Lounge

19' 11" max x 10' 11" max (6.07m max x 3.33m max)

Double glazed window to front, radiator, door to kitchen and double glazed sliding doors to rear garden.

Kitchen

11' 6" max x 7' 10" max (3.51m max x 2.39m max)

Double glazed window to rear, fitted with a range of wall and base units with work surfaces over, sink drainer, splash back tiling, electric oven, gas hob with cooker hood over, plumbing for washing machine and dishwasher, radiator, under stairs storage cupboard, space for appliances and double glazed door to side.

First Floor Landing

Double glazed window to side, doors to bedrooms and bathroom.

Bedroom One

14' 7" x 8' 11" (4.45m x 2.72m)
Double glazed window to front, radiator and storage cupboard.

Bedroom Two

10' 7" x 5' 10" (3.23m x 1.78m)
Double glazed window to rear and radiator.

Bathroom

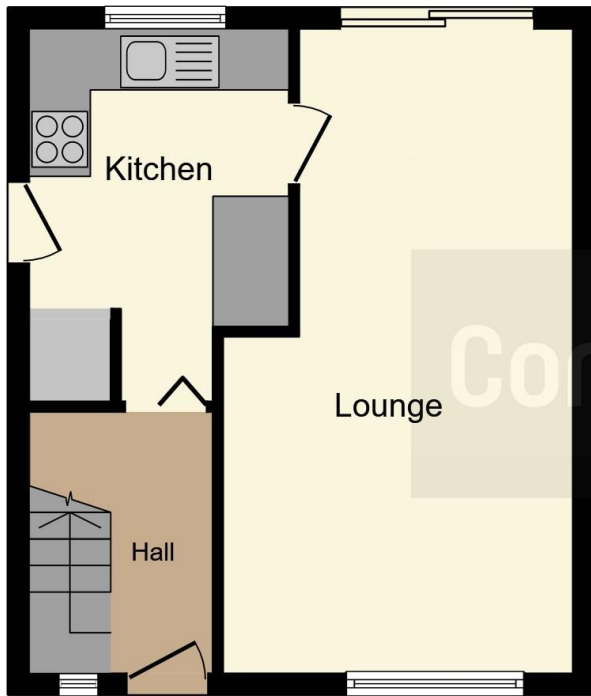
Double glazed window to rear, bath with shower over, vanity wash hand basin, WC, towel radiator, floor and wall tiling.

Outside

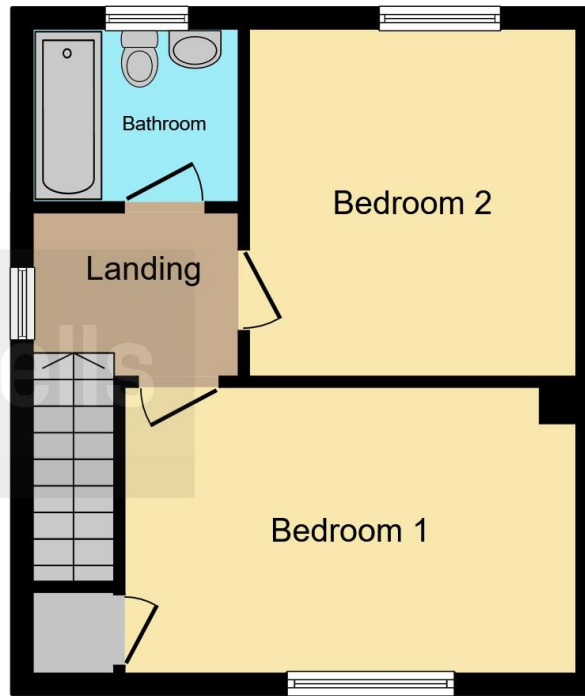
Front:
Concrete driveway providing parking for multiple vehicles.

Rear:
Artificial lawn, decking, large lawn area and side access.





Ground Floor



First Floor



This floor plan is for illustrative purposes only. It is not drawn to scale. Any measurements, floor areas (including any total floor area), openings and orientation are approximate. No details are guaranteed, they cannot be relied upon for any purpose and they do not form part of any agreement. No liability is taken for any error, omission or misstatement. A party must rely upon its own inspection(s). Powered by www.focalagent.com

To view this property please contact Connells on

T 0121 556 2338
E wednesbury@connells.co.uk

22 Springhead
WEDNESBURY WS10 9AD

EPC Rating: E

view this property online connells.co.uk/Property/WED310464

Tenure: Freehold



1. MONEY LAUNDERING REGULATIONS Intending purchasers will be asked to produce identification documentation at a later stage and we would ask for your co-operation in order that there will be no delay in agreeing the sale. 2. These particulars do not constitute part or all of an offer or contract. 3. The measurements indicated are supplied for guidance only and as such must be considered incorrect. Potential buyers are advised to recheck measurements before committing to any expense. 4. We have not tested any apparatus, equipment, fixtures, fittings or services and it is in the buyers interest to check the working condition of any appliances.

Connells Residential is registered in England and Wales under company number 1489613, Registered Office is Cumbria House, 16-20 Hockliffe Street, Leighton Buzzard, Bedfordshire, LU7 1GN. VAT Registration Number is 500 2481 05.

See all our properties at www.connells.co.uk | www.rightmove.co.uk | www.zoopla.co.uk

Property Ref: WED310464 - 0004