



Connells

Barlow Road
Wednesbury



Property Description

SPACIOUS THREE BEDROOM SEMI DETACHED HOME WITH NO UPWARD CHAIN - An ideal first time purchase, offering lounge, kitchen, d/stairs wc, bathroom, three good size bedrooms, ample driveway & rear garden. Also having central heating and double glazing. Property is in a popular residential area.

Entrance Hallway

double glazed access door to front, double glazed window, radiator, tiled flooring, stairs to first floor landing and doors to:-

Lounge

18' 7" x 11' 3" (5.66m x 3.43m)
Double glazed window, double glazed patio doors to rear, radiator and feature fire.

Kitchen

10' x 8' 11" (3.05m x 2.72m)
Double glazed window, fitted with a range of wall and base units with work surfaces over, sink drainer, electric oven and hob, plumbing for washing machine, space for domestic appliances, radiator, storage cupboard, central heating boiler, and door into:-

Lobby Area

Double glazed door to the garden and further door to:-

W.C

Double glazed window and low level WC.

First Floor Landing

Double glazed window, loft access point and doors to:-

Bedroom One

11' 9" max x 8' 5" (3.58m max x 2.57m)
Double glazed window, radiator and storage cupboard.

Bedroom Two

9' 2" x 9' 10" (2.79m x 3.00m)
Double glazed window and radiator.

Bedroom Three

12' 3" x 8' 2" (3.73m x 2.49m)
Double glazed window and radiator.

Shower Room

Shower cubicle, WC, wash hand basin, vanity unit, extractor fan, tiled floor and walls.

Outside

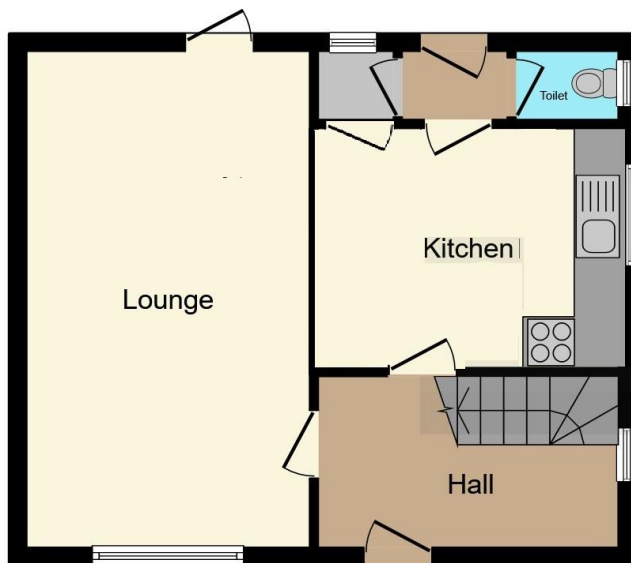
Front:
Tarmac driveway with shrubbery and gated side access to garden.

Rear:
Enclosed garden having patio, borders, shrubbery, shed, two greenhouses, outdoor lighting and tap.

Agents Note

Property has had a new central heating boiler installed 2019.
All property furniture can be left negotiated with an agreed offer with the owner.





Ground Floor



First Floor

This floorplan is for illustrative purposes only and is not drawn to scale. Measurements, floor-areas, openings and orientations are approximate. They should not be relied upon for any purpose and do not form any part of an agreement. No liability is taken for any error or mis-statement. All parties must rely on their own inspections.

To view this property please contact Connells on

T 0121 556 2338
E wednesbury@connells.co.uk

22 Springhead
 WEDNESBURY WS10 9AD

EPC Rating: D

view this property online connells.co.uk/Property/WED309589



Tenure: Freehold



1. MONEY LAUNDERING REGULATIONS Intending purchasers will be asked to produce identification documentation at a later stage and we would ask for your co-operation in order that there will be no delay in agreeing the sale. 2. These particulars do not constitute part or all of an offer or contract. 3. The measurements indicated are supplied for guidance only and as such must be considered incorrect. Potential buyers are advised to recheck measurements before committing to any expense. 4. We have not tested any apparatus, equipment, fixtures, fittings or services and it is in the buyers interest to check the working condition of any appliances.

Connells Residential is registered in England and Wales under company number 1489613, Registered Office is Cumbria House, 16-20 Hockliffe Street, Leighton Buzzard, Bedfordshire, LU7 1GN. VAT Registration Number is 500 2481 05.

See all our properties at www.connells.co.uk | www.rightmove.co.uk | www.zoopla.co.uk

Property Ref: WED309589 - 0008