



Connells

connells.co.uk

0121 556 2338

FOR SALE

Connells

Jean Drive  
Tipton



Jean Drive  
Tipton DY4 7BE

for sale offers in the region of  
**£150,000**



### Property Description

Do you need help selling your property?  
Do you need help finding the right mortgage?  
Do you have a property to let?

Here at Connells Wednesbury we offer free advice on the house buying, selling and letting process. Contact us on 0121 556 2338 or [Wednesbury@connells.co.uk](mailto:Wednesbury@connells.co.uk)

### Entrance Hall

Double glazed door to the front, radiator, stairs to the first floor accommodation.

### Lounge

14' 4" x 11' 11" ( 4.37m x 3.63m )  
Double glazed french doors to the rear, fireplace with electric fire, radiator.

### Kitchen

9' 8" x 5' 6" ( 2.95m x 1.68m )  
A fitted kitchen with a range of wall and base units to include work surfaces over, stainless steel sink drainer, cooker hood, plumbing for washing machine, part tiled, double glazed window to the front.

### First Floor Landing

Loft access, doors to

### Bedroom One

11' 11" x 9' ( 3.63m x 2.74m )  
Double glazed window to the rear, radiator.

### Bedroom Two

11' 11" x 9' 11" max ( 3.63m x 3.02m max )  
Double glazed window to the front, radiator, storage cupboard.

### Shower Room

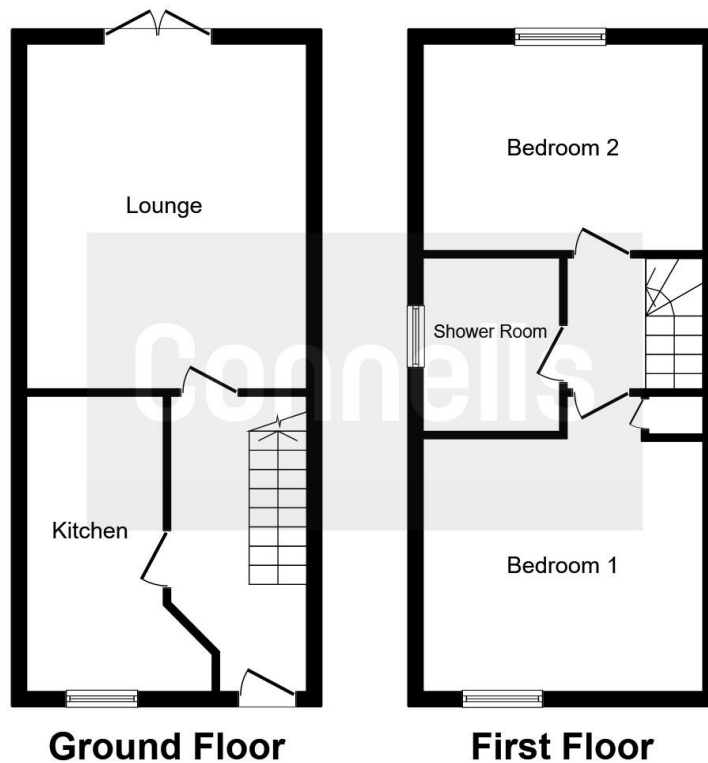
Shower cubicle, wash hand basin in vanity unit, low level w.c., part tiled, towel rail, double glazed window to the side.

### Outside

To the front of the property driveway giving off road parking.







This floor plan is for illustrative purposes only. It is not drawn to scale. Any measurements, floor areas (including any total floor area), openings and orientation are approximate. No details are guaranteed, they cannot be relied upon for any purpose and they do not form part of any agreement. No liability is taken for any error, omission or misstatement. A party must rely upon its own inspection(s).  
Plan produced for Connells. Powered by [www.focalagent.com](http://www.focalagent.com)

To view this property please contact Connells on

**T 0121 556 2338**  
**E [wednesbury@connells.co.uk](mailto:wednesbury@connells.co.uk)**

22 Springhead  
WEDNESBURY WS10 9AD

**EPC Rating: D**

**view this property online** [connells.co.uk/Property/ref-WED307978](http://connells.co.uk/Property/ref-WED307978)



Tenure: Freehold



1. MONEY LAUNDERING REGULATIONS Intending purchasers will be asked to produce identification documentation at a later stage and we would ask for your co-operation in order that there will be no delay in agreeing the sale. 2. These particulars do not constitute part or all of an offer or contract. 3. The measurements indicated are supplied for guidance only and as such must be considered incorrect. Potential buyers are advised to recheck measurements before committing to any expense. 4. We have not tested any apparatus, equipment, fixtures, fittings or services and it is in the buyers interest to check the working condition of any appliances.

**See all our properties at** [www.connells.co.uk](http://www.connells.co.uk) | [www.rightmove.co.uk](http://www.rightmove.co.uk) | [www.zoopla.co.uk](http://www.zoopla.co.uk)

Property Ref: WED307978 - 0005