



Connells

Kingsley Road
KINGSWINFORD



Property Description

A BEAUTIFULLY PRESENTED THREE BEDROOM SEMI DETACHED HOME IN A SOUGHT AFTER AREA NEAR TO LOCAL SCHOOLS AND KINGSWINFORD TOWN CENTRE. Briefly comprising; Driveway, entrance hallway, lounge, large kitchen/diner/utility, downstairs Wc, three good size bedrooms and family bathroom, half garage and gardens to rear.

To The Front

Tarmac driveway with block paved edging to the front of the property providing off road parking and shrubbery.

Entrance Hallway

Composite door to the front elevation, wood effect flooring, stairs to first floor, radiator and doors opening to;

Lounge

13' 9" x 10' 6" (4.19m x 3.20m)
Double glazed bay window to the front elevation, wood effect flooring, feature fireplace with logburner and radiator.

Open Kitchen/Diner/Utility

16' 7" x 10' 4" (5.05m x 3.15m)
Two double glazed windows and Bifold doors to the rear elevation, sky lantern, double glazed stable door to the rear, a range of wall and base units with worktops, one and a half bowl sink, integrated electric oven, induction hob, dishwasher, fridge freezer, plumbing for washing machine, radiator and wood effect flooring.

Downstairs Wc

Vanity wash hand basin and low level Wc.

Landing

Double glazed window to the side elevation and doors to bedrooms and bathroom.

Bedroom One

13' 11" x 9' 5" (4.24m x 2.87m)
Double glazed bay window to the front elevation, fitted wardrobes and radiator.

Bedroom Two

11' 4" x 9' 5" (3.45m x 2.87m)
Double glazed window to the rear elevation and radiator.

Bedroom Three

7' 11" x 6' 11" (2.41m x 2.11m)
Double glazed window to the front elevation and radiator.

Bathroom

Double glazed window to the rear elevation and suite comprising; Roll top bath with over bath mixer shower, low level Wc, wash hand basin, heated towel rail, storage cupboard housing central heating boiler, access to loft.

Rear Garden

Porcelain tiled patio, planted borders, steps to lawn and further patio area.

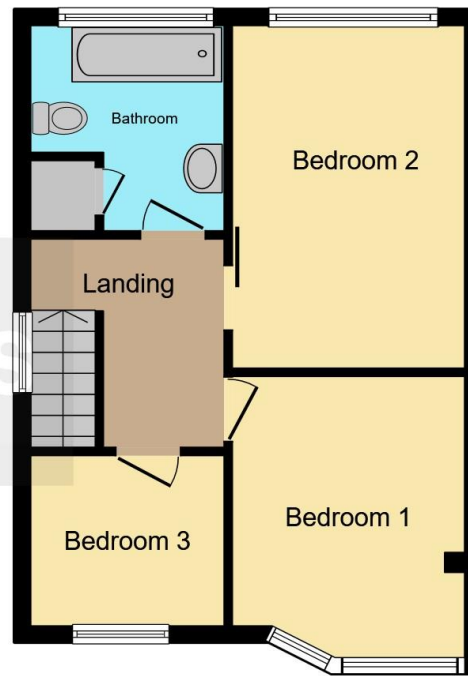
Garage

Half garage with doors opening which provides a storage area.





Ground Floor



First Floor

This floor plan is for illustrative purposes only. It is not drawn to scale. Any measurements, floor areas (including any total floor area), openings and orientation are approximate. No details are guaranteed, they cannot be relied upon for any purpose and they do not form part of any agreement. No liability is taken for any error, omission or misstatement. A party must rely upon its own inspection(s). Powered by www.focalagent.com

To view this property please contact Connells on

T 01384 374 545
E stourbridge@connells.co.uk

11B St. Johns Road
 STOURBRIDGE DY8 1EJ

EPC Rating: C Council Tax
 Band: C

view this property online connells.co.uk/Property/SBR313074



Tenure: Freehold



1. MONEY LAUNDERING REGULATIONS Intending purchasers will be asked to produce identification documentation at a later stage and we would ask for your co-operation in order that there will be no delay in agreeing the sale. 2. These particulars do not constitute part or all of an offer or contract. 3. The measurements indicated are supplied for guidance only and as such must be considered incorrect. Potential buyers are advised to recheck measurements before committing to any expense. 4. We have not tested any apparatus, equipment, fixtures, fittings or services and it is in the buyers interest to check the working condition of any appliances.

Connells Residential is registered in England and Wales under company number 1489613, Registered Office is Cumbria House, 16-20 Hockliffe Street, Leighton Buzzard, Bedfordshire, LU7 1GN. VAT Registration Number is 500 2481 05.

See all our properties at www.connells.co.uk | www.rightmove.co.uk | www.zoopla.co.uk

Property Ref: SBR313074 - 0007