



Connells

Bickon Drive
Quarry Bank Brierley Hill



Property Description

Three storey double fronted detached property in a cul de sac location close to all local amenities, this is a spacious family home which is immaculately presented and briefly comprises of, entrance hallway, lounge, kitchen diner, utility room, downstairs cloakroom, master bedroom with ensuite, family bathroom, three further bedrooms, garage and well maintained rear garden.

To The Front

Small frontage with paved pathway and steps to the entrance door and garage and driveway to the side of the property.

Entrance Hallway

Double glazed window and door to the front elevation, porcelain wood flooring, stairs leading to first floor landing and doors to;

Downstairs Wc

Part tiled with suite comprising; wash hand basin, wc, extractor fan, radiator and porcelain wood flooring.

Lounge

16' 3" x 9' 9" (4.95m x 2.97m)
Double glazed patio doors leading out the the garden, double glazed window to the front elevation, log burner effect fire, porcelain wood flooring and radiator.

Kitchen/Diner

16' 2" x 9' 5" (4.93m x 2.87m)
Double glazed windows to the front and side elevation, spotlights to ceiling, a range of wall and base units with worksurfaces and inset sink drainer, integrated double oven, gas hob and cooker hood, dishwasher, porcelain wood flooring and radiator, dining area with plenty of space for furniture and door to;

Utility Room

6' 6" x 4' 4" (1.98m x 1.32m)

Double glazed door to the rear elevation, wall and base units with splashback tiling, porcelain wood flooring and extractor fan.

First Floor Landing

Double glazed window to the front elevation, radiator, storage and doors to;

Master Bedroom

16' 3" x 10' 1" (4.95m x 3.07m)
Double glazed windows to the front and side elevation, two radiators and door to;

Ensuite

Double glazed window to the rear elevation, part tiled with suite comprising; shower cubicle, vanity wash hand basin, wc, extractor fan, radiator and spotlights to ceiling.

Bedroom Two

10' 4" x 9' 9" (3.15m x 2.97m)
Double glazed window to the side elevation and radiator.

Family Bathroom

Double glazed window to the front elevation and suite comprising; bath with shower over, wash hand basin, wc, part tiled, spotlights to ceiling, extractor fan and wood effect flooring.

Second Floor Landing

Velux window, radiator and doors to;

Bedroom Three

11' 9" x 10' (3.58m x 3.05m)
Double glazed window to the front and side elevation, velux window and radiator.

Bedroom Four

11' 8" x 9' 9" (3.56m x 2.97m)

Double glazed windows to the front and side elevation, velux window and radiator.

Rear Garden

Paved patio to the rear leading to the astro turf lawn, stone chippings to the side and further patio area to the rear.

Garage

16' 10" x 9' 3" (5.13m x 2.82m)

Up and over door leads into the garage which has power and lights.

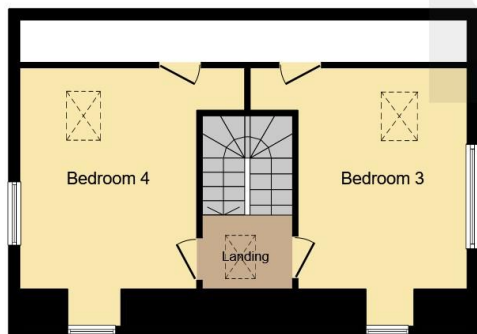




Ground Floor



First Floor



Second Floor

This floor plan is for illustrative purposes only. It is not drawn to scale. Any measurements, floor areas (including any total floor area), openings and orientation are approximate. No details are guaranteed, they cannot be relied upon for any purpose and they do not form part of any agreement. No liability is taken for any error, omission or misstatement. A party must rely upon its own inspection(s). Powered by www.focalagent.com

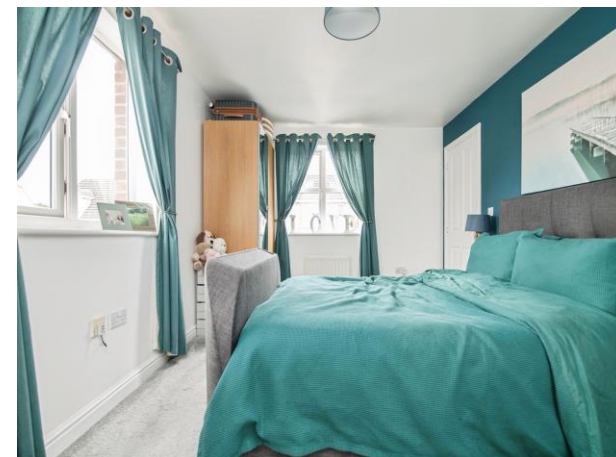
To view this property please contact Connells on

T 01384 374 545
E stourbridge@connells.co.uk

11B St. Johns Road
 STOURBRIDGE DY8 1EJ

EPC Rating: C Council Tax
 Band: E

view this property online connells.co.uk/Property/SBR312738



Tenure: Freehold



1. MONEY LAUNDERING REGULATIONS Intending purchasers will be asked to produce identification documentation at a later stage and we would ask for your co-operation in order that there will be no delay in agreeing the sale. 2. These particulars do not constitute part or all of an offer or contract. 3. The measurements indicated are supplied for guidance only and as such must be considered incorrect. Potential buyers are advised to recheck measurements before committing to any expense. 4. We have not tested any apparatus, equipment, fixtures, fittings or services and it is in the buyers interest to check the working condition of any appliances.

Connells Residential is registered in England and Wales under company number 1489613, Registered Office is Cumbria House, 16-20 Hockliffe Street, Leighton Buzzard, Bedfordshire, LU7 1GN. VAT Registration Number is 500 2481 05.

See all our properties at www.connells.co.uk | www.rightmove.co.uk | www.zoopla.co.uk

Property Ref: SBR312738 - 0007