



Connells

Brooklands
Wordsley Stourbridge



Property Description

A GOOD SIZE END TERRACED PROPERTY IN A POPULAR PART OF WORDSLEY IN NEED OF MODERNISATION. LOTS OF POTENTIAL TO MAKE A LOVELY FAMILY HOME WITH SCHOOLS NEARBY. AVAILABLE WITH NO UPWARD CHAIN DELAY.

To The Front

Path to front door, side access and lawn with mature shrub borders

Entrance Hall

Double glazed door to the front elevation, stairs to first floor and doors to;

Lounge/Diner

19' 1" max x 13' 2" (5.82m max x 4.01m)
Double glazed windows to the front and rear elevation and fireplace.

Kitchen

11' 11" x 8' 3" (3.63m x 2.51m)
Double glazed window to the rear elevation, wall and base units with worktops and inset sink/drainer and door to side elevation.

Landing

Doors to bedrooms and bathroom

Bedroom One

13' 5" x 11' 6" (4.09m x 3.51m)
Double glazed window to the front elevation and built in wardrobe

Bedroom Two

13' 4" x 8' 3" (4.06m x 2.51m)
Double glazed window to the rear elevation and built in wardrobe

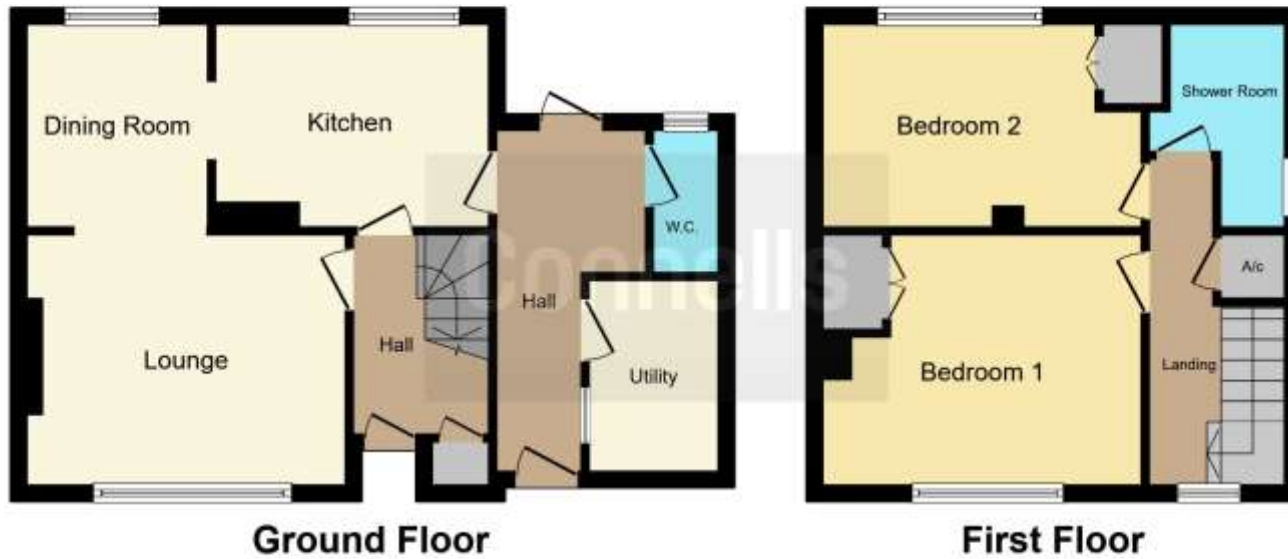
Bathroom

Double glazed window to the side elevation, walk in shower cubicle, wash hand basin and wc.

Rear Garden

To the rear of the property is a lawn with mature shrubs.





This floor plan is for illustrative purposes only. It is not drawn to scale. Any measurements, floor areas (including any total floor area), openings and orientation are approximate. No details are guaranteed, they cannot be relied upon for any purpose and they do not form part of any agreement. No liability is taken for any error, omission or misstatement. A party must rely upon its own inspection(s). Powered by www.focalagent.com

To view this property please contact Connells on

T 01384 374 545
E stourbridge@connells.co.uk

11B St. Johns Road
 STOURBRIDGE DY8 1EJ

EPC Rating: E

view this property online connells.co.uk/Property/SBR311836

Tenure: Freehold



1. MONEY LAUNDERING REGULATIONS Intending purchasers will be asked to produce identification documentation at a later stage and we would ask for your co-operation in order that there will be no delay in agreeing the sale. 2. These particulars do not constitute part or all of an offer or contract. 3. The measurements indicated are supplied for guidance only and as such must be considered incorrect. Potential buyers are advised to recheck measurements before committing to any expense. 4. We have not tested any apparatus, equipment, fixtures, fittings or services and it is in the buyers interest to check the working condition of any appliances.

Connells Residential is registered in England and Wales under company number 1489613, Registered Office is Cumbria House, 16-20 Hockliffe Street, Leighton Buzzard, Bedfordshire, LU7 1GN. VAT Registration Number is 500 2481 05.

See all our properties at www.connells.co.uk | www.rightmove.co.uk | www.zoopla.co.uk

Property Ref: SBR311836 - 0004