



Not for marketing purposes INTERNAL USE ONLY

Herringbone Way
KINGSWINFORD



Property Description

A fantastic opportunity to purchase a modern, 3 bedroom semi-detached property located in a much sought after location in Kingswinford. With local amenities nearby and a MODERN FINISH THROUGHOUT this property is ideal for first time buyers and young families. Briefly comprising: a lounge space, a kitchen/dining area leading to the rear garden. On the first floor is access to the family bathroom and 3 bedrooms including the en-suite in the master bedroom.

To The Front

Door to the front of the property, access via the side to the rear garden. Off road parking.

Entrance Hall

Double glazed door to the front, storage cupboard.

Lounge

13' 10" x 12' (4.22m x 3.66m)
Triple glazed window to the front elevation, central heating radiator.

Kitchen

15' 6" x 9' 4" (4.72m x 2.84m)
Wall and base units, integrated gas oven, electric hob and cooker hood, sink and drainer, double glazed window to the rear elevation, area for dining space, double glazed french doors leading to the rear garden.

Cloakroom

WC, wash hand basin, central heating radiator.

Bedroom 1

9' 2" x 9' 8" (2.79m x 2.95m)
Triple glazed window to the front elevation, built in wardrobe, central heating radiator.

En-Suite

Shower, WC, wash hand basin.

Bedroom 2

10' 9" x 8' 7" (3.28m x 2.62m)
Built in wardrobe, double glazed window to the rear elevation, central heating radiator.

Bedroom 3

11' 6" x 6' 7" (3.51m x 2.01m)
Double glazed window to the rear elevation, central heating radiator.

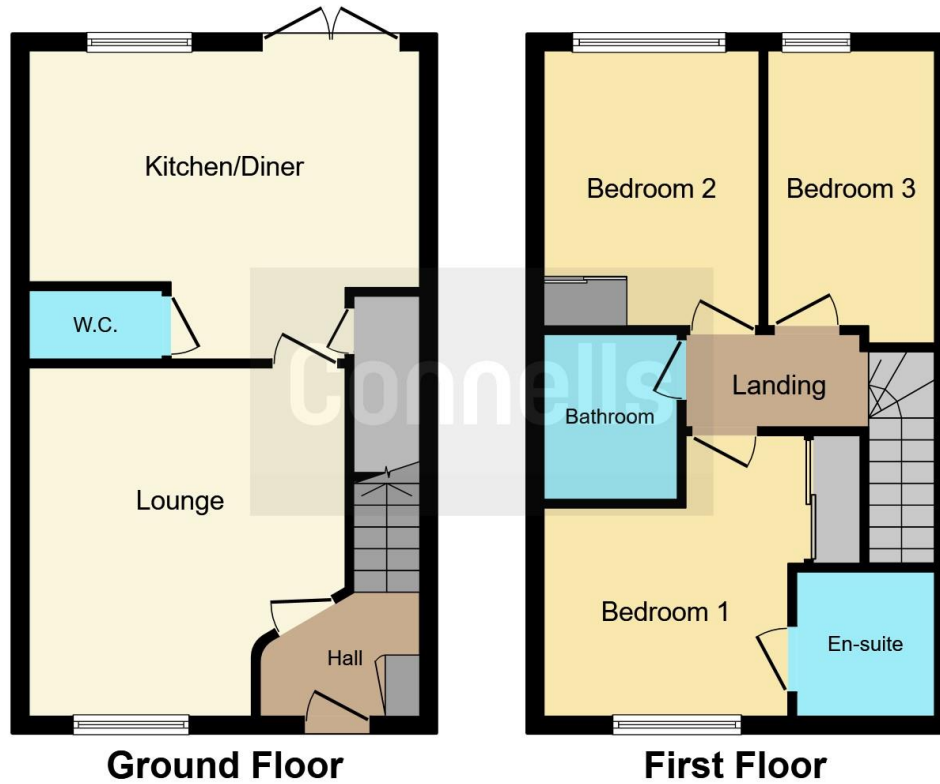
Bathroom

Bath with shower over, WC, wash hand basin, part tiled

To The Rear

Paved patio to the rear leading to lawn area, shed to the rear of the garden. Side access to the front of the property.





This floor plan is for illustrative purposes only. It is not drawn to scale. Any measurements, floor areas (including any total floor area), openings and orientation are approximate. No details are guaranteed, they cannot be relied upon for any purpose and they do not form part of any agreement. No liability is taken for any error, omission or misstatement. A party must rely upon its own inspection(s). Powered by www.focalagent.com

To view this property please contact Connells on

T 01384 374 545
E stourbridge@connells.co.uk

11B St. Johns Road
 STOURBRIDGE DY8 1EJ

EPC Rating: B

[check out more properties at connells.co.uk](http://www.connells.co.uk)

Tenure: Freehold



1. MONEY LAUNDERING REGULATIONS Intending purchasers will be asked to produce identification documentation at a later stage and we would ask for your co-operation in order that there will be no delay in agreeing the sale. 2. These particulars do not constitute part or all of an offer or contract. 3. The measurements indicated are supplied for guidance only and as such must be considered incorrect. Potential buyers are advised to recheck measurements before committing to any expense. 4. We have not tested any apparatus, equipment, fixtures, fittings or services and it is in the buyers interest to check the working condition of any appliances.

Connells Residential is registered in England and Wales under company number 1489613, Registered Office is Cumbria House, 16-20 Hockliffe Street, Leighton Buzzard, Bedfordshire, LU7 1GN. VAT Registration Number is 500 2481 05.

See all our properties at www.connells.co.uk | www.rightmove.co.uk | www.zoopla.co.uk

Property Ref: SBR312049 - 0002