



Connells

Crowther Road
Wolverhampton

Crowther Road
Wolverhampton WV6 0HY

for sale offers in the region of
£250,000



Property Description

Connells Wolverhampton offer for sale this:

THREE BEDROOM HOME IN SOUGHT AFTER LOCATION - A well presented three bedroom semi detached property in Newbridge location. Property has spacious lounge, kitchen, bathroom, three bedrooms, front and rear garden with shared driveway, garage to rear. Property offers no upward chain.

Entrance Hallway

Lounge

Kitchen

Landing

Entrance Hallway

Bedroom 1

Bedroom 2

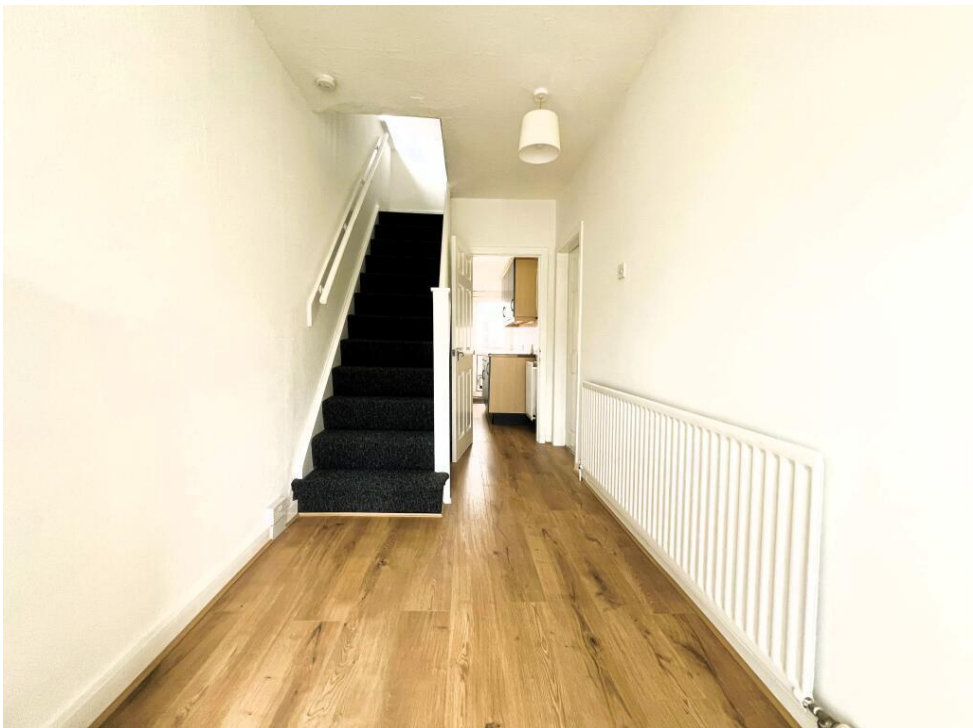
Bedroom 3

Front And Rear Garden

Driveway To Front







To view this property please contact Connells on

T 01902 710 170
E wolverhampton@connells.co.uk

81-83 Darlington Street
WOLVERHAMPTON WV1 4EX

EPC Rating: D Council Tax
Band: B

Tenure: Freehold

view this property online connells.co.uk/Property/WVH332882



1. MONEY LAUNDERING REGULATIONS Intending purchasers will be asked to produce identification documentation at a later stage and we would ask for your co-operation in order that there will be no delay in agreeing the sale. 2. These particulars do not constitute part or all of an offer or contract. 3. The measurements indicated are supplied for guidance only and as such must be considered incorrect. Potential buyers are advised to recheck measurements before committing to any expense. 4. We have not tested any apparatus, equipment, fixtures, fittings or services and it is in the buyers interest to check the working condition of any appliances.

Connells Residential is registered in England and Wales under company number 1489613, Registered Office is Cumbria House, 16-20 Hockliffe Street, Leighton Buzzard, Bedfordshire, LU7 1GN. VAT Registration Number is 500 2481 05.

See all our properties at www.connells.co.uk | www.rightmove.co.uk | www.zoopla.co.uk

Property Ref: WVH332882 - 0003