



Connells

Wolmer Road
Ashmore Park Wednesfield Wolverhampton



Property Description

Connells Wolverhampton have the pleasure of bringing to the market this traditional and well laid out three bedroom semi detached property in the popular Ashmore Park area. Internally the property has a good traditional layout and must be viewed in order to fully appreciate. Viewing is highly recommended to appreciate the accommodation on offer.

The property comprises of a good sized entrance hall, lounge, large open plan kitchen diner, three well proportioned bedrooms and a stylish bathroom with jaccuzi bath. Externally there is a gravelling frontage offering ample off road parking, side gated access to a rear garden and a low maintenance rear garden.

The Location & Area

Situated just a stone's throw from the popular Kitchen Lane which is a wonderful rural setting on the border for Ashmore Park and Essington. There are a fantastic selection of local schools and shopping can be found within Wednesfield and Bentley Bridge retail park. The M54 and M6 motorways are also relatively close by.

Entrance Hall

Stairs access, two understairs storage cupboards, door to lounge, door to kitchen, double glazed door to front.

Lounge

Double glazed window to front, inset gas fire, radiator, door to entrance hall, wooden flooring.

Kitchen Diner

Double glazed doors to rear, double glazed window to rear, range of wall and base units with an integrated oven, hob and extractor, space for a dishwasher, space for a washing machine, inset sink, space for a fridge freezer, open to dining area, space for a dining table.

First Floor Landing

Doors to various room, stairs to entrance hall.

Bedroom One

Double glazed window to front, radiator, door to landing.

Bedroom Two

Double glazed window to rear, radiator, door to landing.

Bedroom Three

Double glazed window to front, radiator, door to landing.

Family Bathroom

Two double glazed windows to rear, Jacuzzi bath with a mixer shower over, wash hand basin, box back toilet, door to landing.

Outside Front

Gravelled frontage, paving to side, side gate

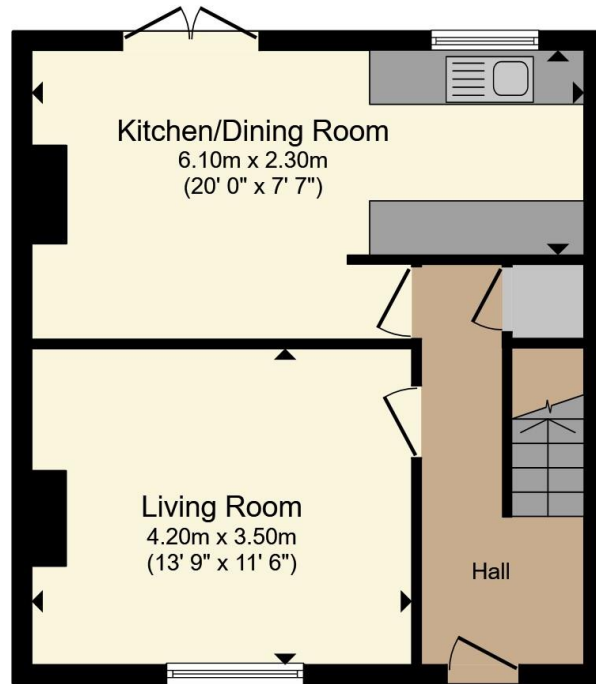
Outside Rear

Paving, lawned area, gravelled borders, outside tap, gate to side.

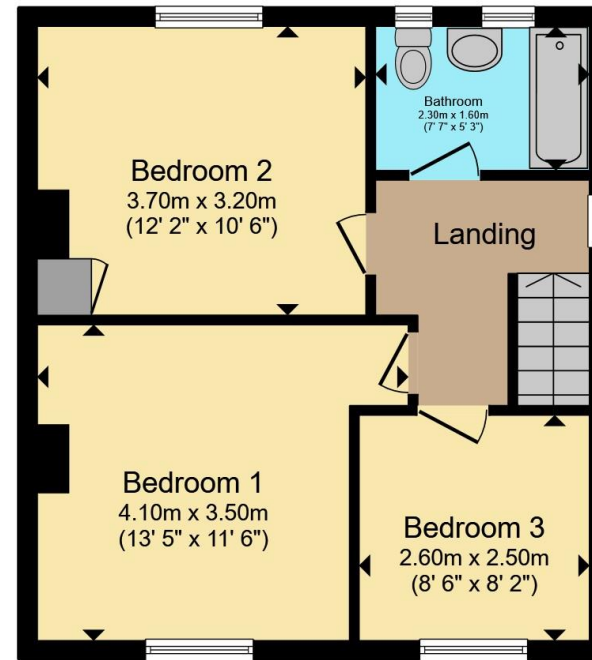








Ground Floor



First Floor

Total floor area 82.9 m² (893 sq.ft.) approx

This floor plan is for illustrative purposes only. It is not drawn to scale. Any measurements, floor areas (including any total floor area), openings and orientation are approximate. No details are guaranteed, they cannot be relied upon for any purpose and they do not form part of any agreement. No liability is taken for any error, omission or misstatement. A party must rely upon its own inspection(s). Powered by www.propertybox.io

Connells

To view this property please contact Connells on

T 01902 710 170
E wolverhampton@connells.co.uk

81-83 Darlington Street
WOLVERHAMPTON WV1 4EX

EPC Rating: Council Tax
Awaited Band: A

Tenure: Freehold

view this property online connells.co.uk/Property/WVH334029



1. MONEY LAUNDERING REGULATIONS Intending purchasers will be asked to produce identification documentation at a later stage and we would ask for your co-operation in order that there will be no delay in agreeing the sale. 2. These particulars do not constitute part or all of an offer or contract. 3. The measurements indicated are supplied for guidance only and as such must be considered incorrect. Potential buyers are advised to recheck measurements before committing to any expense. 4. We have not tested any apparatus, equipment, fixtures, fittings or services and it is in the buyers interest to check the working condition of any appliances.

Connells Residential is registered in England and Wales under company number 1489613, Registered Office is Cumbria House, 16-20 Hockliffe Street, Leighton Buzzard, Bedfordshire, LU7 1GN. VAT Registration Number is 500 2481 05.

See all our properties at www.connells.co.uk | www.rightmove.co.uk | www.zoopla.co.uk

Property Ref: WVH334029 - 0002