



**Connells**

Sunset Close  
Coven Wolverhampton



# Sunset Close Coven Wolverhampton WV9 5AL

for sale offers over  
**£350,000**



## Property Description

Connells Award Winning Estate Agents in Wolverhampton are delighted to bring to the market this fabulous BRAND NEW two/three bedroom versatile semi detached bungalow over two floors in a lovely sought after location.

The property comprises of entrance hallway, ground floor bathroom, kitchen diner, three rooms downstairs, master bedroom upstairs with en-suite and dressing area, en-suite, rear garden & generous driveway to front.

Viewings are advised to fully appreciate accommodation on offer.

## The Location & Area

Situated off School Lane with further links to the main A449 Stafford Road which offers fantastic commuting access to the M54 and M6 motorways. The main shopping areas are Brewood, Codsall and Pendeford along with a full selection of local shopping at Penkridge and local convenience stores with Coven.

## Entrance Hall

Double glazed door to front, spotlights, central heating radiator, understair storage area, storage cupboard, door to lounge.

## Lounge

15' 3" x 10' 4" ( 4.65m x 3.15m )

Double glazed patio doors to rear garden, central heating radiator, spotlights.

## Fitted Kitchen Diner

10' 4" x 15' 3" ( 3.15m x 4.65m )

A range of wall and base units, work surfaces, splash back, sink and drainer, integrated gas oven, hob and extractor fan, spotlights, tiled flooring, cupboard housing wall mounted boiler.

### Bedroom Two

11' 4" x 10' 1" ( 3.45m x 3.07m )

Double glazed patio doors to rear, central heating radiator.

### Bedroom Three

11' 2" x 12' ( 3.40m x 3.66m )

Double glazed window, central heating radiator.

### Ground Floor Bathroom

Double glazed window to rear, bath with shower over, wash hand basin, low level wc, spotlights, heated towel rail, extractor fan, tiled walls, tiled floors

### First Floor Landing

Stairs rising from entrance hall, doors to various rooms.

### Bedroom One

22' 10" max x 21' 4" max ( 6.96m max x 6.50m max )

Double glazed window, central heating radiator, dressing area, door to en-suite.

### En-Suite Shower Room

Shower cubicle, low level wc, wash hand basin, heated towel rail. extractor fan, tiled floor, tiled walls.

### Outside Front

Tarmac driveway providing generous off road parking.

### Outside Rear

Enclosed rear garden with gated side access, outdoor lighting, outdoor power point, field views to rear.

### Agents Note

The properties benefit from having solid wooden doors, solar panels installed (included in purchase price), fully alarmed and electric car charging point.



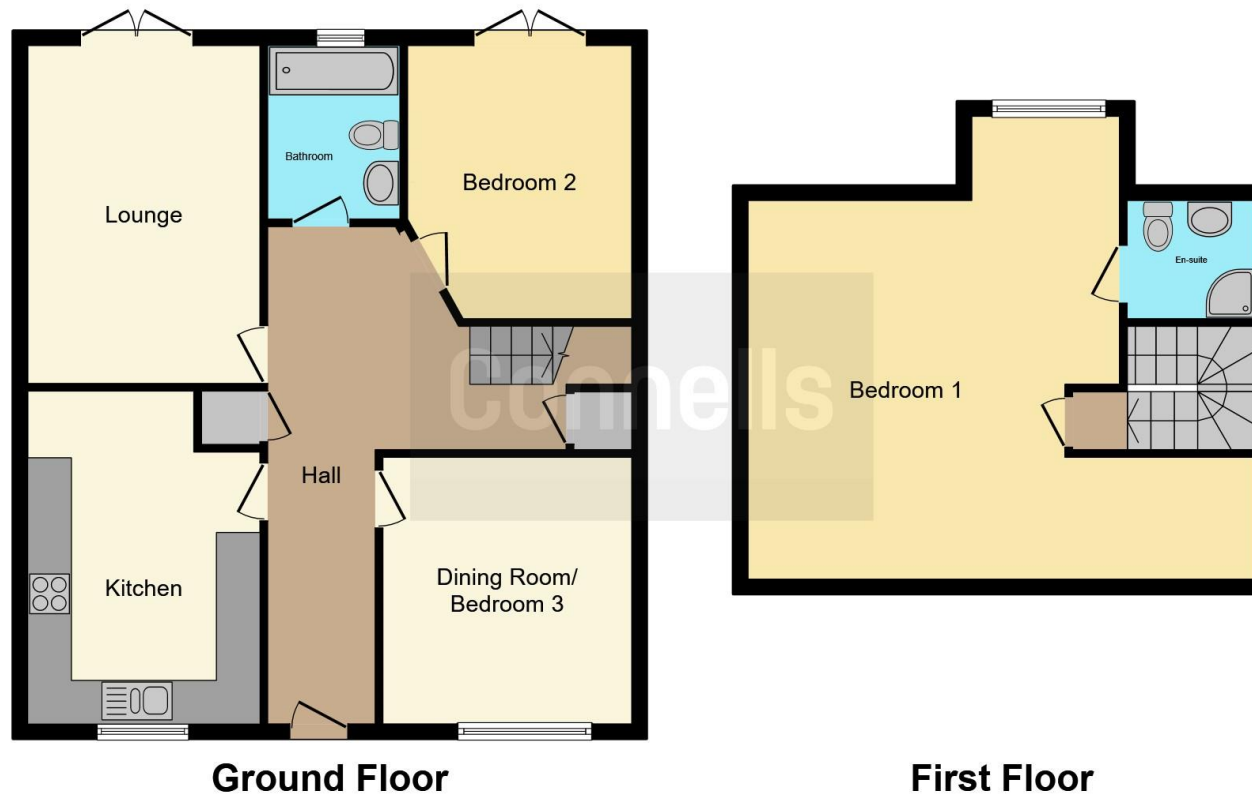












This floor plan is for illustrative purposes only. It is not drawn to scale. Any measurements, floor areas (including any total floor area), openings and orientation are approximate. No details are guaranteed, they cannot be relied upon for any purpose and they do not form part of any agreement. No liability is taken for any error, omission or misstatement. A party must rely upon its own inspection(s). Powered by [www.focalagent.com](http://www.focalagent.com)

To view this property please contact Connells on

**T 01902 710 170**  
**E [wolverhampton@connells.co.uk](mailto:wolverhampton@connells.co.uk)**

81-83 Darlington Street  
 WOLVERHAMPTON WV1 4EX

EPC Rating: A Council Tax  
 Band: Deleted

Tenure: Freehold

**view this property online [connells.co.uk/Property/WVH334310](http://connells.co.uk/Property/WVH334310)**



1. MONEY LAUNDERING REGULATIONS Intending purchasers will be asked to produce identification documentation at a later stage and we would ask for your co-operation in order that there will be no delay in agreeing the sale. 2. These particulars do not constitute part or all of an offer or contract. 3. The measurements indicated are supplied for guidance only and as such must be considered incorrect. Potential buyers are advised to recheck measurements before committing to any expense. 4. We have not tested any apparatus, equipment, fixtures, fittings or services and it is in the buyers interest to check the working condition of any appliances.

Connells Residential is registered in England and Wales under company number 1489613, Registered Office is Cumbria House, 16-20 Hockliffe Street, Leighton Buzzard, Bedfordshire, LU7 1GN. VAT Registration Number is 500 2481 05.

**See all our properties at [www.connells.co.uk](http://www.connells.co.uk) | [www.rightmove.co.uk](http://www.rightmove.co.uk) | [www.zoopla.co.uk](http://www.zoopla.co.uk)**

Property Ref: WVH334310 - 0003