



Connells

Brooklyn Grove
Bilston



Property Description

Connells Wolverhampton are delighted to bring to market this well presented five bedroom semi-detached family home situated in the popular area of Bilston.

Internally the property comprises of an inviting entrance hallway leading to a converted garage which is now used as a ground floor bedroom, two reception rooms being used as a lounge and additional fifth bedroom, ground floor wc, utility room and a modern stylish kitchen. On the first floor there are three bedrooms and a stylish shower room.

Externally there is off road parking for ample vehicles and a well presented rear garden.

Location And Area

Set to the south of Wolverhampton City Centre in the Coseley Area, the property is ideally situated for access to Birmingham New Road providing commuting links to Wolverhampton and Birmingham. Coseley Rail Station is only a short drive away and excellent local schools are nearby.

Approach

Ample off road parking.

Porch

Door to entrance hallway.

Entrance Hallway

Radiator, stairs to first floor, doors to various rooms.

Ground Floor Wc

Low flush wc, tiled walls, heated towel rail, hand basin, extractor fan.

Ground Floor Bedroom Four

14' 3" x 6' 3" (4.34m x 1.91m)

Double glazed window to front, radiator.

Lounge

12' 7" x 10' 3" (3.84m x 3.12m)

Double glazed window to front, radiator.

Potential Bedroom Five

Double glazed window to rear, radiator, doors to rear garden.

Utility

11' 2" x 10' 3" (3.40m x 3.12m)

Double glazed window to rear, radiator, patio doors, doors to hallway and kitchen.

Kitchen

14' 2" x 5' 10" (4.32m x 1.78m)

Matching wall and base units with stainless steel sink drainer with mixer tap, plumbing point for washing machine, oven and grill with extractor hood above, wall mounted boiler, double glazed window to rear, door to rear garden and utility.

First Floor Landing

Double glazed window to side, doors to various rooms.

Bedroom One

13' x 10' 4" (3.96m x 3.15m)

Double glazed window to front, radiator.

Bedroom Two

10' 4" x 11' (3.15m x 3.35m)

Double glazed window to rear, radiator.

Bedroom Three

6' 2" x 6' 5" (1.88m x 1.96m)

Double glazed window to front, radiator.

Shower Room

Walk in shower cubicle, low flush wc, was hand basin, extractor fan, heated towel rail, tiled walls and double glazed window to side.

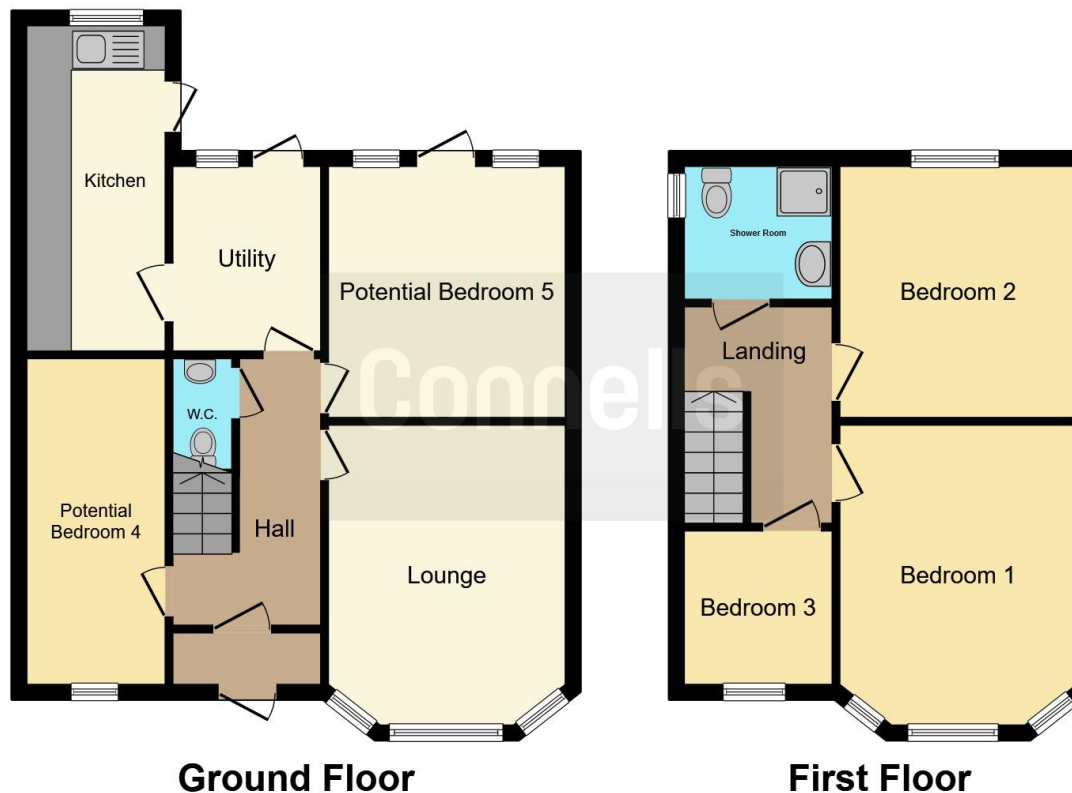
Outside Rear

Potential to be landscaped with mature tree, outside tap point and timber fencing.









This floor plan is for illustrative purposes only. It is not drawn to scale. Any measurements, floor areas (including any total floor area), openings and orientation are approximate. No details are guaranteed, they cannot be relied upon for any purpose and they do not form part of any agreement. No liability is taken for any error, omission or misstatement. A party must rely upon its own inspection(s). Powered by www.focalagent.com

To view this property please contact Connells on

T 01902 710 170
E wolverhampton@connells.co.uk

81-83 Darlington Street
 WOLVERHAMPTON WV1 4EX

EPC Rating: D Council Tax
 Band: B

Tenure: Freehold

view this property online connells.co.uk/Property/WVH331712



1. MONEY LAUNDERING REGULATIONS Intending purchasers will be asked to produce identification documentation at a later stage and we would ask for your co-operation in order that there will be no delay in agreeing the sale. 2. These particulars do not constitute part or all of an offer or contract. 3. The measurements indicated are supplied for guidance only and as such must be considered incorrect. Potential buyers are advised to recheck measurements before committing to any expense. 4. We have not tested any apparatus, equipment, fixtures, fittings or services and it is in the buyers interest to check the working condition of any appliances.

Connells Residential is registered in England and Wales under company number 1489613, Registered Office is Cumbria House, 16-20 Hockliffe Street, Leighton Buzzard, Bedfordshire, LU7 1GN. VAT Registration Number is 500 2481 05.

See all our properties at www.connells.co.uk | www.rightmove.co.uk | www.zoopla.co.uk

Property Ref: WVH331712 - 0003