



**Connells**

Church Road  
Bradmore Wolverhampton

# Church Road Bradmore Wolverhampton WV3 7ER

for sale offers in the region of  
**£175,000**



## Property Description

Connells Wolverhampton have the delight of bringing to the market this attractive and well presented two bedroom mid-terraced property in a popular residential location. Benefiting from large room sized this property must be viewed in order to appreciate.

The property comprises of lounge, dining room, kitchen, two bedrooms and a family bathroom. Externally there is an outside storage area and outdoor toilet. Externally to front there is a courtyard style garden and to rear there is a generous enclosed rear garden with side shared access.

## Location And Area

Situated on the popular Church Road which offers fantastic access to popular schooling, Bantock Park, local shops, doctors, dentists and public houses with eateries.

## Dining Room

11' 4" x 11' 2" ( 3.45m x 3.40m )

Double glazed door to front, double glazed window to front, radiator, door to lounge

## Lounge

12' 3" x 11' 2" ( 3.73m x 3.40m )

Double glazed window to rear, radiator, door to kitchen, door to stairs.

## Kitchen

13' 1" x 6' 11" ( 3.99m x 2.11m )

Double glazed window to side, double glazed door to garden, radiator, range of stylish wall and base units with space for various appliances, inset sink, door to lounge.



## First Floor Landing

Doors to various rooms.

## Bedroom One

10' 11" x 11' 1" ( 3.33m x 3.38m )

Double glazed window to front, radiator, door to landing.

## Bedroom Two

12' 4" x 8' 3" ( 3.76m x 2.51m )

Double glazed window to rear, radiator, door to landing.

## Bathroom

Panelled bath, pedestal sink, low flush toilet, heated towel rail, double glazed window to rear.

## Outside Front

Low maintenance courtyard style garden with slate chippings and a paved pathway.

## Outside Rear

Brick built storage area as well as an outdoor toilet. Generous rear garden with a paved patio area, large lawned area with a range of mature plant, trees and shrubs, as well as panelled fencing.

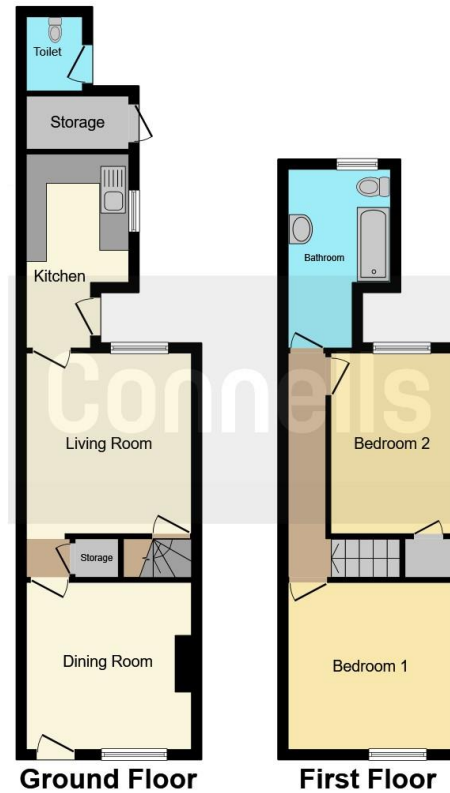
## Agents Note

Please note this property has a cellar.









This floor plan is for illustrative purposes only. It is not drawn to scale. Any measurements, floor areas (including any total floor area), openings and orientation are approximate. No details are guaranteed, they cannot be relied upon for any purpose and they do not form part of any agreement. No liability is taken for any error, omission or misstatement. A party must rely upon its own inspection(s). Powered by [www.focalagent.com](http://www.focalagent.com)

To view this property please contact Connells on

**T 01902 710 170**  
**E [wolverhampton@connells.co.uk](mailto:wolverhampton@connells.co.uk)**

81-83 Darlington Street  
 WOLVERHAMPTON WV1 4EX

**EPC Rating: D**

Tenure: Freehold

**view this property online [connells.co.uk/Property/WVH332124](http://connells.co.uk/Property/WVH332124)**



1. MONEY LAUNDERING REGULATIONS Intending purchasers will be asked to produce identification documentation at a later stage and we would ask for your co-operation in order that there will be no delay in agreeing the sale. 2. These particulars do not constitute part or all of an offer or contract. 3. The measurements indicated are supplied for guidance only and as such must be considered incorrect. Potential buyers are advised to recheck measurements before committing to any expense. 4. We have not tested any apparatus, equipment, fixtures, fittings or services and it is in the buyers interest to check the working condition of any appliances.

Connells Residential is registered in England and Wales under company number 1489613, Registered Office is Cumbria House, 16-20 Hockliffe Street, Leighton Buzzard, Bedfordshire, LU7 1GN. VAT Registration Number is 500 2481 05.

**See all our properties at [www.connells.co.uk](http://www.connells.co.uk) | [www.rightmove.co.uk](http://www.rightmove.co.uk) | [www.zoopla.co.uk](http://www.zoopla.co.uk)**

Property Ref: WVH332124 - 0002