



Connells
FOR SALE

Connells

Waltho Street
Whitmore Reans Wolverhampton



Property Description

Connells Wolverhampton are delighted to bring to the market this immaculately presented and stylish three bedroom semi detached family property on a popular residential location. Befitting from having an attractive layout this property should be viewed in order to appreciate.

The property comprises of entrance hall, family lounge diner, modern fitted kitchen stylish kitchen and downstairs wc. On the first floor there are three well portioned bedrooms, en-suite shower room and family bathroom. Externally there are low maintenance front and rear gardens with feature decking area, driveway and garage.

The Location & Area

Set to the north west of Wolverhampton City Centre with easy access to A449 and adjoining M54 motorway. Only a short drive from Wolverhampton Race Course and the local Tettenhall Village shopping facilities. Ideally placed for the city centre and rail station which is approximately a mile away with numerous local schools.

Entrance Hall

Double glazed door to front, stairs to first floor landing, doors to various rooms.

Downstairs Wc

Double glazed window to front, low flush toilet, pedestal sink, central heating radiator, door to entrance hall.

Modern Fitted Kitchen

16' 10" x 8' 7" (5.13m x 2.62m)

Double glazed window to front and rear, a range of stylish modern wall and base units, inset oven, hob, extractor, one and half stainless steel drainer sink, dishwasher, plumbing for washing, central heating radiator, door to entrance hall, door to family lounge

Family Lounge

Double glazed window to front, french doors to rear garden, central heating radiator, door to entrance hall, door to kitchen.

First Floor Landing

Doors to various rooms.

Bedroom One

12' 8" x 8' 7" (3.86m x 2.62m)

Double glazed window to rear, central heating radiator, door to first floor landing.

En-Suite

Double glazed window to front, shower cubicle with electric shower, low flush toilet, door to Bedroom One.

Bedroom Two

11' 4" x 8' 4" (3.45m x 2.54m)

Double glazed window to rear, central heating radiator, door to first floor landing.

Bedroom Three

8' 3" x 8' 8" (2.51m x 2.64m)

Double glazed window to rear, central heating radiator, door to first floor landing.

Family Bathroom

Double glazed window to front, central heating radiator, pedestal sink, low flush toilet, door to first floor landing.

Garage

Up and over door to front

Outside Front

Driveway, low maintenance rear garden, wrought iron railings, paved pathway

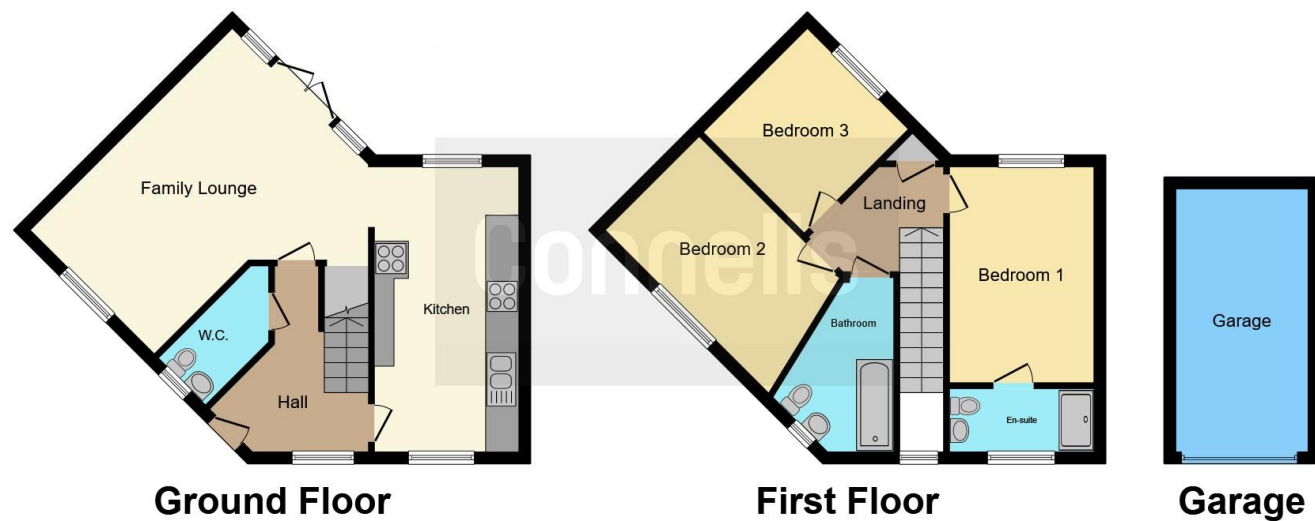
Outside Rear

Enclosed rear garden with panelled fence, paved patio areas, feature decking area.









This floor plan is for illustrative purposes only. It is not drawn to scale. Any measurements, floor areas (including any total floor area), openings and orientation are approximate. No details are guaranteed, they cannot be relied upon for any purpose and they do not form part of any agreement. No liability is taken for any error, omission or misstatement. A party must rely upon its own inspection(s). Powered by www.focalagent.com

To view this property please contact Connells on

T 01902 710 170
E wolverhampton@connells.co.uk

81-83 Darlington Street
 WOLVERHAMPTON WV1 4EX

EPC Rating: C Council Tax
 Band: C

Tenure: Freehold

view this property online connells.co.uk/Property/WVH332237



1. MONEY LAUNDERING REGULATIONS Intending purchasers will be asked to produce identification documentation at a later stage and we would ask for your co-operation in order that there will be no delay in agreeing the sale. 2. These particulars do not constitute part or all of an offer or contract. 3. The measurements indicated are supplied for guidance only and as such must be considered incorrect. Potential buyers are advised to recheck measurements before committing to any expense. 4. We have not tested any apparatus, equipment, fixtures, fittings or services and it is in the buyers interest to check the working condition of any appliances.

Connells Residential is registered in England and Wales under company number 1489613, Registered Office is Cumbria House, 16-20 Hockliffe Street, Leighton Buzzard, Bedfordshire, LU7 1GN. VAT Registration Number is 500 2481 05.

See all our properties at www.connells.co.uk | www.rightmove.co.uk | www.zoopla.co.uk

Property Ref: WVH332237 - 0003