



Connells

Birmingham New Road
Bilston



Property Description

Connells Wolverhampton are delighted to bring to the market this well presented and recently refurbished three bedroom detached family property in a popular residential location. Benefiting from an abundance of internal space this property should be viewed in order to fully appreciate.

The property comprises of a large entertainment style lounge diner measuring over 23ft, recently refitted modern entertainment style kitchen with feature breakfast bar, on the first floor there are three well proportioned bedrooms, separate family bathroom, downstairs wc, large garage ideal for conversion (subject to planning permission).

Externally there is a driveway to front, garden to front, enclosed rear garden ideal for those with children.

Location And Area

Set to the south east of Wolverhampton City Centre with easy access to Birmingham New Road and Black Country route. The property is situated on in a service road with good transport links and easy access to local amenities.

Entrance Hall

Double glazed door to side, stairs access, door to lounge, radiator.

Lounge Diner

23' 9" max x 13' 10" into recess (7.24m max x 4.22m into recess)

Double glazed window to front and rear, two radiators, door to entrance hall, door to kitchen.

Kitchen

16' 5" x 10' 7" max (5.00m x 3.23m max)

Recently refitted modern kitchen with a range of wall and base units and a feature worktop, inset sink, double glazed window to side, double glazed door to side, door to garage. feature spotlights, feature tiling with plinth lighting, inset oven, hob and extractor, breakfast bar area, door to lounge.



First Floor Landing

Doors to various rooms, double glazed window to side.

Bedroom One

11' 11" x 11' 10" (3.63m x 3.61m)

Double glazed window to front, radiator, door to landing.

Bedroom Two

11' 6" x 8' 11" (3.51m x 2.72m)

Double glazed window to rear, radiator, door to landing.

Bedroom Three

7' 4" x 5' 11" (2.24m x 1.80m)

Double glazed window to front, radiator, storage cupboard, door to landing

Family Bathroom

Double glazed window to rear, panelled bath with shower over, pedestal sink, low flush toilet, door to landing.

Downstairs Wc

Glazed window to rear, low flush toilet, wash hand basin, door to garage.

Garage

Door to front, light and power, door to kitchen.

Outside Front

Driveway to front, garden area to front,

Outside Rear

Large enclosed rear garden which is mostly lawned with additional paved pathway area.

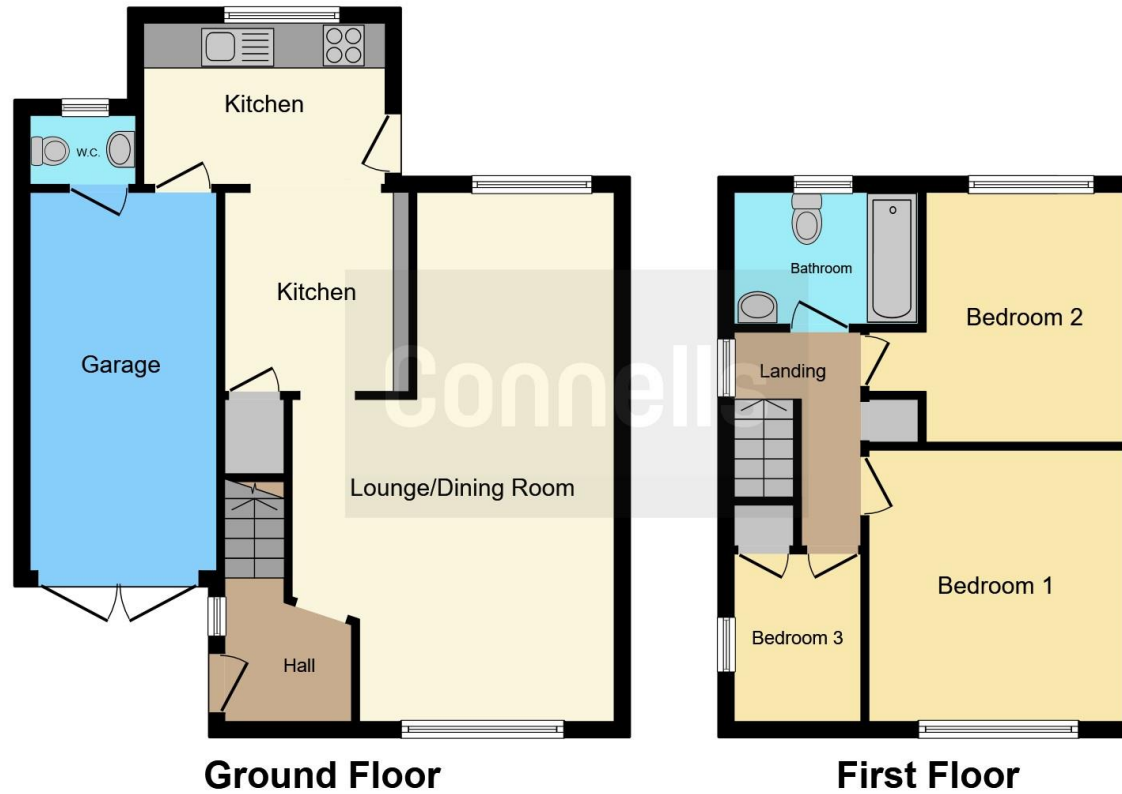
Agents Note

We are aware there is a mineshaft within the mortgageable distance of this property, your own legal advice should be taken before incurring any costs.









This floor plan is for illustrative purposes only. It is not drawn to scale. Any measurements, floor areas (including any total floor area), openings and orientation are approximate. No details are guaranteed, they cannot be relied upon for any purpose and they do not form part of any agreement. No liability is taken for any error, omission or misstatement. A party must rely upon its own inspection(s). Powered by www.focalagent.com

To view this property please contact Connells on

T 01902 710 170
E wolverhampton@connells.co.uk

81-83 Darlington Street
 WOLVERHAMPTON WV1 4EX

EPC Rating: C

Tenure: Freehold

view this property online connells.co.uk/Property/WVH331170



1. MONEY LAUNDERING REGULATIONS Intending purchasers will be asked to produce identification documentation at a later stage and we would ask for your co-operation in order that there will be no delay in agreeing the sale. 2. These particulars do not constitute part or all of an offer or contract. 3. The measurements indicated are supplied for guidance only and as such must be considered incorrect. Potential buyers are advised to recheck measurements before committing to any expense. 4. We have not tested any apparatus, equipment, fixtures, fittings or services and it is in the buyers interest to check the working condition of any appliances.

Connells Residential is registered in England and Wales under company number 1489613, Registered Office is Cumbria House, 16-20 Hockliffe Street, Leighton Buzzard, Bedfordshire, LU7 1GN. VAT Registration Number is 500 2481 05.

See all our properties at www.connells.co.uk | www.rightmove.co.uk | www.zoopla.co.uk

Property Ref: WVH331170 - 0002