



Connells

The Lindens Newbridge Crescent
Off Tettenhall Road Wolverhampton

The Lindens Newbridge Crescent Off Tettenhall Road Wolverhampton WV6 0LR

for sale offers over
£95,000



Property Description

Samuel Thorneywork from the award winning Connells Wolverhampton branch brings to the market The Lindens, Newbridge Crescent, just off the popular Tettenhall Road. This delightful second floor two-bedroom apartment is presented in good condition and comes with the added benefit of a long lease, making it an ideal choice for both first-time buyers and investors alike.

As you enter the communal hallway, you'll appreciate the well-kept surroundings and stairs leading to your entrance hallway. The spacious lounge invites you to relax and unwind, providing a bright and airy atmosphere thanks to the recently fitted new windows that enhance both the aesthetic and energy efficiency of the home. The well-appointed kitchen features ample storage and workspace for all your cooking needs. The apartment boasts two generously sized bedrooms, each offering serene spaces to retreat at the end of the day. The bathroom is conveniently located, providing all necessary amenities for your daily routine.

One of the standout features of this apartment is the included garage, which not only offers secure parking but also serves as valuable additional storage space, an essential asset in urban living.

The Location & Area

Situated just off the Tettenhall Road with property benefits from having fantastic access to both into Wolverhampton city centre which offers a wealth of shops, bars and restaurants and the popular Tettenhall village which also has cafes and shopping. The Tettenhall Road offers bus links into Wolverhampton and further afield. Located in the immediate area is a range of parks and recreational facilities and notable schools.

Communal Hall

Stairs rising to all floors.

Entrance Hall

Ceiling light point, cupboard housing water tank and doors to the lounge, kitchen, bathroom, and bedrooms.

Lounge

14' x 11' (4.27m x 3.35m)

Double glazed windows to the rear, electric fireplace and ceiling light point.



Kitchen

9' x 9' (2.74m x 2.74m)

Matching wall and base units with integrated electric oven, four ring electric hob with extractor hood, partly tiled walls, plumbing point for washing machine, double glazed window to the front and two ceiling light points.



Bedroom One

14' x 10' (4.27m x 3.05m)

Double glazed window to rear, fitted wardrobes and ceiling light point.

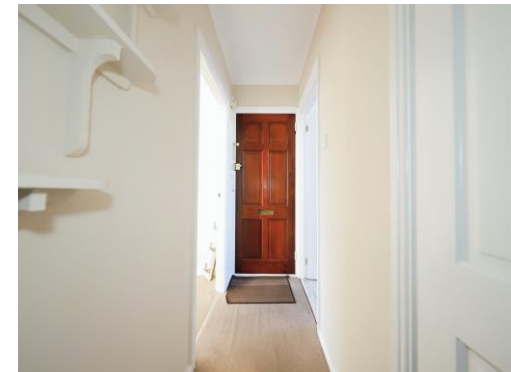
Bedroom Two

10' x 9' (3.05m x 2.74m)

Double glazed window to the front, fitted wardrobes, ceiling light point and storage heater.

Bathroom

Panelled bath with shower over, low flush wc, wash hand basin, tiled walls, electric towel rail with radiator.

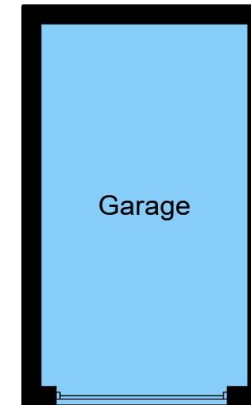








Floor Plan



Garage

This floor plan is for illustrative purposes only. It is not drawn to scale. Any measurements, floor areas (including any total floor area), openings and orientation are approximate. No details are guaranteed, they cannot be relied upon for any purpose and they do not form part of any agreement. No liability is taken for any error, omission or misstatement. A party must rely upon its own inspection(s). Powered by www.focalagent.com

To view this property please contact Connells on

T 01902 710 170
E wolverhampton@connells.co.uk

81-83 Darlington Street
WOLVERHAMPTON WV1 4EX

EPC Rating: F

Tenure: Leasehold

view this property online connells.co.uk/Property/WVH330452

This is a Leasehold property with details as follows; Term of Lease 99 years from 01 Jan 2019. Should you require further information please contact the branch. Please Note additional fees could be incurred for items such as



1. MONEY LAUNDERING REGULATIONS Intending purchasers will be asked to produce identification documentation at a later stage and we would ask for your co-operation in order that there will be no delay in agreeing the sale. 2. These particulars do not constitute part or all of an offer or contract. 3. The measurements indicated are supplied for guidance only and as such must be considered incorrect. Potential buyers are advised to recheck measurements before committing to any expense. 4. We have not tested any apparatus, equipment, fixtures, fittings or services and it is in the buyers interest to check the working condition of any appliances.

Connells Residential is registered in England and Wales under company number 1489613, Registered Office is Cumbria House, 16-20 Hockliffe Street, Leighton Buzzard, Bedfordshire, LU7 1GN. VAT Registration Number is 500 2481 05.

See all our properties at www.connells.co.uk | www.rightmove.co.uk | www.zoopla.co.uk

Property Ref: WVH330452 - 0004