



Connells
connells.co.uk 01902 710 170
FOR SALE

Connells

Durberville Road
Parkfields Wolverhampton

Durberville Road Parkfields Wolverhampton WV2 2EZ

for sale
£145,000



Property Description

Connells Wolverhampton are delighted to bring to the market this CHAIN FREE exceptionally spacious three bedroom end terrace property in a popular location. Benefiting from an extended kitchen and wet room to rear, this property would make a fantastic purchase with potential for improvement.

The property comprises of entrance hall, lounge, dining room, extended kitchen and downstairs wet room. To the first floor there are three bedrooms and family bathroom. Eternally there is a large hard standing area to front previous used as a driveway (no dropped kerb) and to the rear is a large rear garden.

The Location & Area

Set to the south east of Wolverhampton City Centre the property has a large selection of local schools and is ideally placed for access to Birmingham New Road with commuting links to Dudley and Birmingham.

Entrance Hall

Double glazed front door, central heating radiator, doors to various rooms.

Lounge

12' 3" x 10' (3.73m x 3.05m)

Bright and spacious lounge with a double-glazed window to the front, leading to the entrance hall

Dining Room

Generous dining room featuring a double-glazed window to the rear, a door to the entrance hall, under-stairs storage, a gas fire, and access to the kitchen.

Kitchen

12' 9" x 7' 6" (3.89m x 2.29m)

Functional kitchen with a double-glazed window on the side wall, base units, boiler space for various appliances, and a door leading to an inner entrance hall

Downstairs Wet Room

Well-equipped wet room with a double-glazed window to the side, featuring an electric shower, toilet, wash hand basin, radiator, and an extractor fan, door to inner hall.



First Floor Landing

Doors to various rooms, loft access, and spotlights

Bedroom One

12' 8" x 10' (3.86m x 3.05m)

Double glazed window to the front, radiator, fitted wardrobes, a ceiling fan, and door leading to the landing.

Bedroom Two

11' x 8' 6" (3.35m x 2.59m)

Double-glazed window to the rear, radiator, spotlight, and door leading to the landing.

Bedroom Three

7' x 5' 6" (2.13m x 1.68m)

Double glazed window to the front radiator, storage cupboard and door leading to the landing

Bathroom

Double glazed window to the rear, panelled bath, pedestal sink, flush toilet, central heating radiator, and door leading to the landing

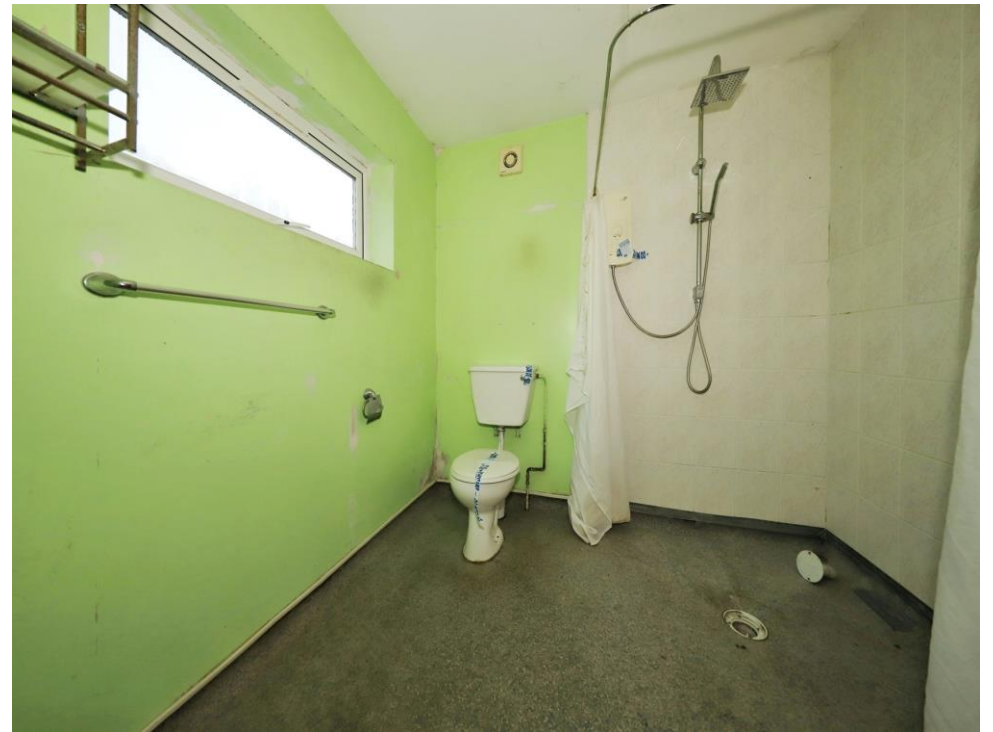
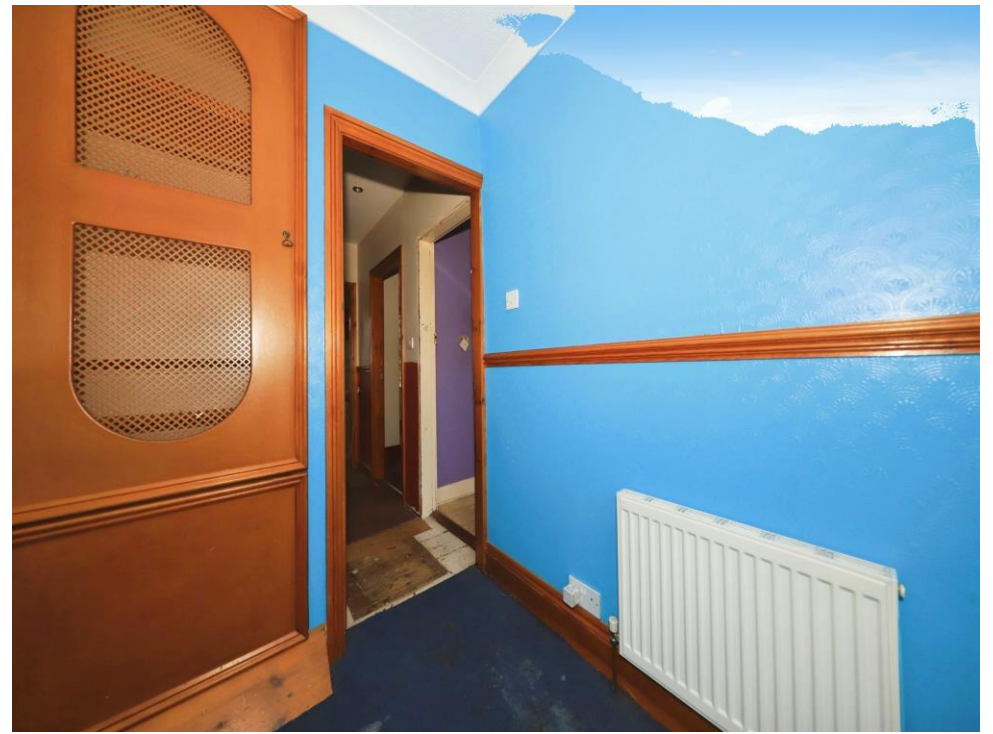
Outside Front

Hard standing area previously used as a driveway; however, there is no dropped kerb for vehicle access. This structured format presents the property features clearly, making it easy for potential buyers or renters to visualize the space and its layout.

Outside Rear

Extremely large rear garden surrounded by a range of hedging and panel fencing. Features a paved patio area and a further lawn area, along with a timber constructed shed.









This floor plan is for illustrative purposes only. It is not drawn to scale. Any measurements, floor areas (including any total floor area), openings and orientation are approximate. No details are guaranteed, they cannot be relied upon for any purpose and they do not form part of any agreement. No liability is taken for any error, omission or misstatement. A party must rely upon its own inspection(s). Powered by www.focalagent.com

To view this property please contact Connells on

T 01902 710 170
E wolverhampton@connells.co.uk

81-83 Darlington Street
 WOLVERHAMPTON WV1 4EX

EPC Rating: B Council Tax
 Band: A

Tenure: Freehold

view this property online connells.co.uk/Property/WVH331177



1. MONEY LAUNDERING REGULATIONS Intending purchasers will be asked to produce identification documentation at a later stage and we would ask for your co-operation in order that there will be no delay in agreeing the sale. 2. These particulars do not constitute part or all of an offer or contract. 3. The measurements indicated are supplied for guidance only and as such must be considered incorrect. Potential buyers are advised to recheck measurements before committing to any expense. 4. We have not tested any apparatus, equipment, fixtures, fittings or services and it is in the buyers interest to check the working condition of any appliances.

Connells Residential is registered in England and Wales under company number 1489613, Registered Office is Cumbria House, 16-20 Hockliffe Street, Leighton Buzzard, Bedfordshire, LU7 1GN. VAT Registration Number is 500 2481 05.

See all our properties at www.connells.co.uk | www.rightmove.co.uk | www.zoopla.co.uk

Property Ref: WVH331177 - 0008